

# LEIGH RAG

**FEBRUARY 2024**

Lee Parker, Editor

email [leighragnz@gmail.com](mailto:leighragnz@gmail.com)

<https://www.facebook.com/leighragnz>

proudly serving

Leigh, Matheson Bay, Whangateau, Pakiri  
sponsored by the Leigh Community Club

view the Leigh Rag online

[www.leighbythesea.co.nz](http://www.leighbythesea.co.nz)

---

## LOCAL LEGENDS BRAVE THE SHAVE

special report by Marty Hickman



Gabe Ransom and Frick Atkins looking 'godly' pre-shave. photos Sam Cale

On Saturday January 27<sup>th</sup> excitement buzzed through the air as the community gathered for a unique fundraising day that promised both laughter and a lot less hair. Frick Atkins and Gabe Ransom, two brave souls with luscious locks and mighty beards, decided to sacrifice their beloved hair to raise funds for the Leigh Volunteer Fire Brigade.

It all started in the think-tank known as *The Leigh Sawmill*, where a chance meeting between Errol Knight and Frick led to the question "How much to shave it off?". Such a transformation can't be taken lightly, and so the fundraiser was hatched. But as there's two beards in this town, soon Gabe also answered the call to lose his Gandalf-esque locks for the cause.

But what's a fundraising day without some entertainment, right? A sausage sizzle, live music, ice creams and a display from the Fire Brigade kept the crowd entertained while the hairy heroes prepared for the chopping block. As Frick and Gabe underwent their hair-raising transformations courtesy of Lady Barber Vanessa Hurley and Shanelle Fraser-Smith (Smith's Hairdressing), MC Ataahua Knight kept the mood light, cracking jokes and sharing anecdotes about the two brave souls sacrificing their beloved hair for the greater good. According to local Melissa Crockett-Joyoue the pair lost "20 years each of hair and beards".

As the locks were auctioned off one by one, the crowd gave generously, and the donation buckets overflowed with support. Suddenly the siren from the fire station went off and a team of firefighters were quickly dispatched from the event – a timely reminder of the importance of the work they do for us. Meanwhile, the crowd cheered as the hair fell to the ground, revealing a side of Frick and Gabe that most had never seen.

## **Local Legends Brave the Shave** (continued)

Gabe's dog, Basil, with his head tilted in confusion and amusement, watched the proceedings with a mix of curiosity and canine approval. Dogs, it seems, appreciate a good grooming session just as much as the next person. Frick and Gabe, now looking a bit less like mountain men and a bit more like everyday heroes, shared a moment of camaraderie. Their sacrifice was a symbol of solidarity, reminding everyone that a little change can go a long way in supporting those who protect and serve our community.

By the end of the day, the community had come together, not just to witness the transformation of Frick and Gabe but to contribute to a cause that benefits us all – the Leigh Volunteer Fire Brigade. The funds raised will go towards new equipment, and maintaining the crucial services the brigade provides to keep us safe. Unprecedented giving from this small community smashed the goal of \$20,000, reaching an incredible \$36,689.80.

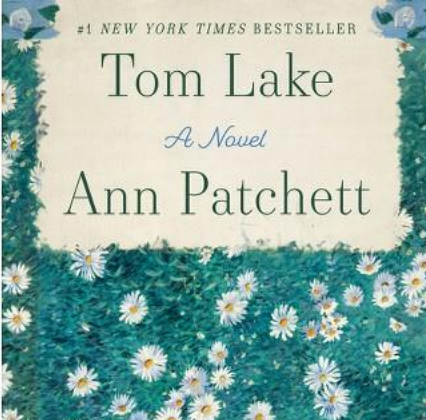
Overwhelmed, the Brigade posted on the Love Leigh Facebook page, "This money will be deposited into our First Response Trust and go directly towards lifesaving equipment, enabling us to better help people in their time of need. Huge shout out to Frick and Gabe, without your selfless act this would never have been possible. We live in an amazing place, surrounded by amazing people. Take a bow our wonderful Community, you are all SUPER STARS!"



# SUMMER READS

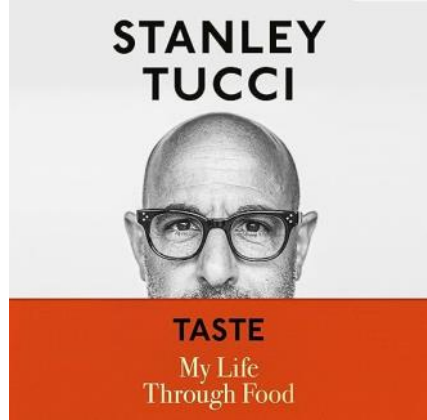
**Audio Books** are perfectly designed for summer listening, whether lounging on the beach, working in the garden or road tripping. The narrator can make or break the best of stories, so here are a few favourites told by gifted raconteurs that are bound to keep you on the edge of your seat.

Prefer the book? Check it out at the Leigh Library. If the book isn't on the shelves, Jenny and her team will help you find what you're looking for.



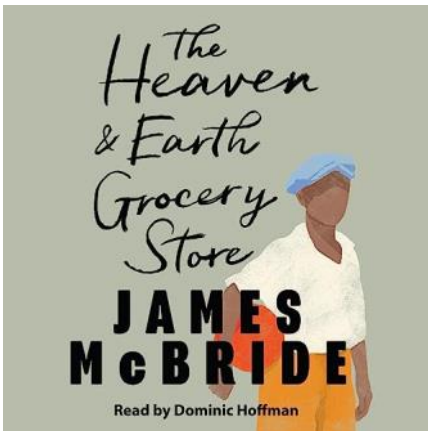
**Tom Lake** by Ann Patchett  
Read by Meryl Streep  
Fiction

It doesn't get much better than this. Streep's narration is simply mesmerising. A beautifully nuanced coming of age story about a Northern Michigan family with a fascinating past. The lead protagonist is Lara, the matriarch and keeper of secrets.



**Taste, My Life Through Food**  
Read by Stanley Tucci  
Memoir/Cookbook

Well known for his movie roles, Tucci has also made a splash in the culinary world. He's a fabulous cook from an Italian family that takes food very seriously. Funny, and chock full of great recipes. You'll devour it.



**The Heaven & Earth Grocery Store**  
By James McBride  
Read by Dominic Hoffman  
Fiction

Anything by McBride is going to be good. He writes moving, witty and often heart wrenching novels about the complexities of race relations in America. This story begins in Chicken Hill, Pennsylvania, a working-class community of Jewish, Black, and European immigrant families during the 1970s. Things heat up when a skeleton is found and a murder mystery unfolds. Other McBride recommendations are *Deacon King Kong* and *The Good Lord Bird* (also a film starring Ethan Hawke).

# TURBO CHARGED

## Embracing the MacGyver Within

by Lee Parker

Locally Cath Lewis is well known for her juicy pick-me-up, Turbo Tonic (TT). People swear by its restorative properties and travel great distances to queue up at her Matakana Market stall on Saturday mornings to buy a bottle. So popular, it's now stocked at Leigh Eats, Charlie's Gelato and fifty other outlets throughout the country.

From the top of her Grand View Road driveway, I watched this silver bobbed dynamo buzz between TT's manufacturing headquarters (her basement), and a camper van project underway in the driveway. Cath waved me down, slowing just a second to introduce herself and a mate working on the van's tiny kitchen. Her warmly extended hand was adorned with sunshine-gold fingertips stained by turmeric.



Chuckling, she said “there’s always a lot of MacGyvering going on here!” Grass-roots ingenuity is in her blood. The daughter of a “brilliant engineer”, she inherited her father’s penchant for function over form. Not many could imagine turning a cement mixer into a water-blaster, for example. With degrees in chemistry and nutrition, she approaches a project with scientific precision and free-wheeling creativity.

“The problem is that I have so many ideas, but never had the time or capital to see them through.” Then Covid hit. For years she had been making TT for friends and family. The blend of fresh turmeric, ginger, and lime soothed her arthritis. “I take a shot every morning and I don’t have any hand pain anymore. Besides boosting the immune system, it greatly reduces inflammation.” Friends and family saw the benefits too and encouraged her to sell it. The upside of the lockdown was that it granted precious time to plan her new home-based business.

A friend designed a fun label for ten bottles. Cath posted them for sale on the Love Leigh Facebook page. They went in a flash. Stunned, she doubled the batch, wrote another post, and sold out again. People started reaching out, requesting more. Cath obliged, making contactless deliveries around the neighbourhood. Wondering whether she was getting ahead of herself, she tentatively bought 60 bottles and more ingredients. Another sellout. Propelled by the support, she built a website and began approaching local businesses like Warkworth’s *Bin Inn Wholefoods* who enthusiastically stocked it. Other local outlets followed suit. She now buys 2000 bottles at a time, sources tons of turmeric sustainably from Fiji, and employs four local women part-time.

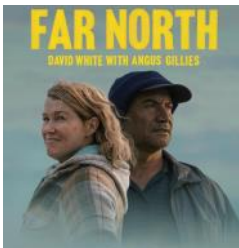
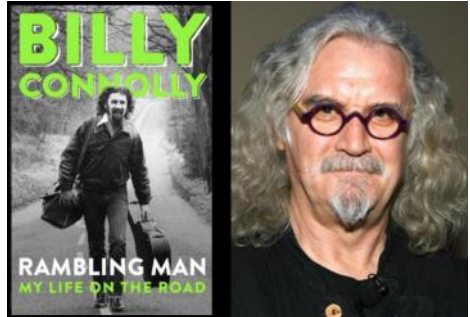
Cath gushed with gratitude, “Leigh has been amazing. I’m so grateful. I love this community! I couldn’t have done any of this anywhere else. This is just the best place to live.” A place she has called home for the past 27 years. Besides her big scientific brain, boundless creativity, and infectious energy, Cath is a natural storyteller and gifted marketer. In Hollywood they’d call her a triple-threat if she could sing, dance and act (but maybe she can do this too, an article for another day perhaps?) In Leigh we just call her bloody fantastic. You only have to watch her work the crowd at Matakana Market for a couple minutes to get hooked, “I talk with passion, because there’s a lot of integrity in every bottle I make, everything I have goes into it.”

A shot of TT is a morning ritual in our house. A refreshing start to the morning. One bottle goes a long way because it’s concentrated. Grab one at **Leigh Eats** or Matakana Market. Bottles are returnable for recycling. [www.turbotonics.co.nz](http://www.turbotonics.co.nz)

# LEIGH LIBRARY

Travelling and exploring themes abound in new non-fiction: **Rambling Man**, comedian Billy Connolly's 'truly global adventure', engaging anecdotes by Donna Leon at 80 in **Wandering Through Life**, and Dee Campling's **Camper Heaven** may inspire you to customise a van and take to the road yourself.

Fiction samples: Peter James' **Stop Them Dead**, murder at an illegal puppy farm, and **The Frozen River** by Ariel Lawhon, set in Maine in the winter of 1789, 'atmospheric, unique'. French writer Anne Berest's **The Postcard**, part novel, part documentary, explores generational trauma in the author's Jewish family.



NZ non-fiction includes **Far North** (jaw-dropping true story of a botched drug import, also streaming as a new 6 part series starring Robyn Malcolm and Temuera Morrison), local marine ecologist Paul Caiger's magnificently illustrated **Fishes of Aotearoa**, and **A Forager's Life**, by Manawatu-based Helen Lehdorf (much more than a memoir).

2024 began strongly for the Library with a record number of books issued during January, a flurry of new members, and a successful *withdrawn books' sale*. Thank you, Leigh people, for your support of the Library. You are always welcome at the Cottage. Jenny

---

## OBITUARY | Jill Brewis

Born 20 January 1937, Jill passed away peacefully on 10 January 2024 following a short illness. She owned a bach in Matheson Bay since 1970 and was well-known and much liked. She will always be remembered for her hospitality, cooking, Scrabble skills, and vivacious personality.

Jill and her first husband Andy were part of a group of early families who bought land and/or baches in the 1960s and 1970s at Matheson Bay. Along with her second husband Ernesto, she continued to regularly frequent Matheson Bay, rebuilding her Spray Crescent bach in 2020. Jill was known for creating delicious food and salads to share. She would often, along with her friend Digby Law, host 25 people for long and enjoyable lunches. Jill will be fondly remembered as a lovely person who was inquisitive, authentic and would always talk to children at the beach. Jill's family are incredibly happy that she lived such a full life and died with no regrets.

Ray Culver (nephew of Jill Brewis)



# LEIGH COMMUNITY CLUB

*run by volunteers for volunteers*

What a difference a year makes! Perfect summer weather abounds, making it a fantastic time to spend in beautiful Leigh. The influx of tourists to Matheson Bay and Goat Island have delivered a welcomed boost to our local businesses. It's marvelous to see the Leigh Sawmill open again, always a favourite destination for visitors and locals alike. Congratulations to the staff and management teams for making that happen.

Be on the lookout for our trail maintenance team who will be extending the all-weather track on the upper harbour walkway before the winter sets in. Our AGM will be in March, followed by the Anzac Day Service in April, details will be announced.

The LLC has two main community communication initiatives:

**The Leigh Rag** is a monthly local print/digital newspaper highlighting local news and businesses. Join the monthly digital copy mailing list: email [leighragnz@gmail.com](mailto:leighragnz@gmail.com), join the Rag Facebook page: <https://www.facebook.com/leighragnz>. It is also available in print at The Leigh Store from the 20<sup>th</sup> of the month, and online at [www.leighbythesea.co.nz](http://www.leighbythesea.co.nz).

The second is the **Leigh Community Group Facebook page**, [www.facebook.com/leigh.com](http://www.facebook.com/leigh.com). Become a member and volunteer! Contact us today about how you can get involved.

Guy Parkes — Chair, Leigh Community Club [leighcommunityclub@gmail.com](mailto:leighcommunityclub@gmail.com)

## Leigh 100 Raffle Results January 2024

1st ticket #47

2nd ticket #67

3rd ticket #41

*Congratulations Winners!*

## Waste Free Leigh

the Leigh Waste Minimisation sewing group meets:

**Mondays and Thursdays 9.30 am to 11.30 am**  
meeting at the Cumberland Street rooms in Leigh Hall

***Come along and help us create fabulous items from rescued fabrics!***



**LEIGH ELECTRICAL LTD**  
RESIDENTIAL AND COMMERCIAL

**JOE ROBERTS**  
Phone: 021 220 3717  
[info@leighelectrical.co.nz](mailto:info@leighelectrical.co.nz)  
42 Hauraki Rd, Leigh, 0985



**GOAT ISLAND  
MARINE DISCOVERY CENTRE**  
THE UNIVERSITY OF AUCKLAND  
NEW ZEALAND  
Te Wihare Wananga o Tamaki Makaurau



**Open  
10 to 4pm  
weekends, school &  
public holidays  
now to 30 Nov**

Open everyday  
1 Dec to 30 April

**09 923 3645**  
[www.goatlandmarine.co.nz](http://www.goatlandmarine.co.nz)

# Interview | Sharon Ferguson

## Local Children's Book Author



### ***What made you decide to start writing children's books?***

From early childhood I've been in love with stories and storytelling. Picture books were some of my most prized possessions. I would study them for hours, imagining myself within their fantastic worlds. Early on I knew I would write and illustrate books one day. The day came early last year after our beloved fur-baby Toby passed. At nearly seventeen, he was the centre of my world. Our move to Leigh from the North Shore was extremely hard on him, because he was quite blind by then. I was traumatised by the loss and felt the need to be in my own space to heal. That quiet time allowed me to review my life goals and connect with what was closest to my heart. Children's illustrated stories was at the top of that list.

### ***How did illustrating fold into your writing process? Do you have a formal art background, or self-taught?***

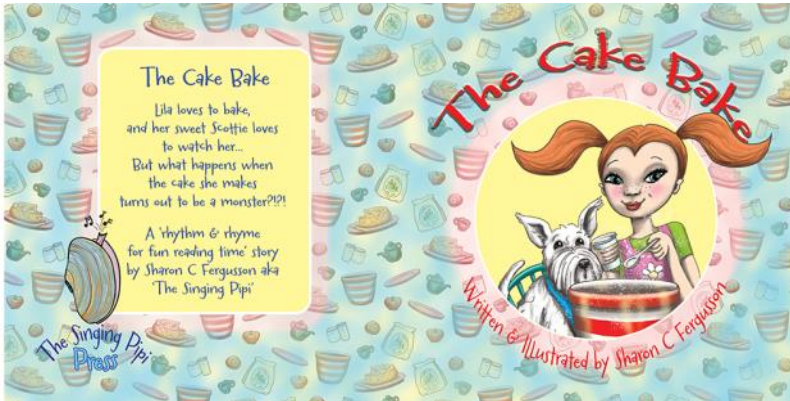
My Mum loves to tell the story of how I drew before I walked. I created a mural in the hallway with a pen from the telephone table, shuffling along on my bottom, proudly unveiling the artwork when Mum found me. It was a precursor to a lifetime of drawing and painting. And although I didn't go to university or have formal art training, I bring that experience to my illustrations, whether in manual or digital form. Digital has been a determined process. Photoshop brushes with my Wacom Cintiq and stylus allow me to paint the same way between mediums. When a story comes to me, the characters generally arrive too as the story plays out in my minds eye. I often feel like a vessel receiving stories and pictures from the heavens above. As a result, each story has its own look and feel.

### ***You have written and illustrated three children's books so far, 'The Cake Bake', 'A Frog, On a Log, Beside a Deep Bog', and 'The Singing Pipi' (also the name of your publishing company). Tell us about your process of creating and publishing your work. Are there more books in the pipeline?***

'The Cake Bake' was written several years ago, before being illustrated. There is often a lag between writing and illustration. The process of publishing a picture book from beginning to end was a great learning curve. The next book, 'A Frog, On a Log, Beside a Deep Bog' woke me up several nights running until one morning I announced to my husband, "apparently I'm writing today!" After that came 'The Singing Pipi', my namesake. She was quietly waiting for her moment and needed very little encouragement to come forward. I've recently finished another story about a local endangered bird. I also have many other story ideas I hope to develop and publish soon.

# Interview | Sharon Ferguson

continued



*The Cake Bake, one of Ferguson's three published children's books*

## ***How does the local environment influence your writing/illustrations?***

Our first family holidays were spent at Sandspit Campground. Dad was keen on boating and eventually built several immaculate steel-hulled yachts. As a result, we spent most of our summers and weekends around the Hauraki Gulf, Mahurangi, Kawau, Great Barrier, Coromandel and Waiheke. Trips up the river to Warkworth were always a treat. My travel bag always contained books, comics, drawing pads and pens. Reading and drawing worked well with boating. It exposed me to many sea creatures and landscapes. I found inspiration in life at sea, in everything it contained and beyond. And let's not forget animals, people, architecture, fashion, and ideas...life itself is inspiration!

## ***What does a typical workday look like for you?***

Like many people, I wear many hats! Several years ago I qualified as an Interior Designer which utilises visual, spatial, colour, design, and graphic skills. Illustration requires similar skills like design, composition, spatial awareness, perspective, colour and graphics. I use them to create new worlds for children to immerse themselves into. It was an absolute privilege to go back to school as a (very!) mature student and gain a Diploma of Applied Interior Design. My husband was a great support. Prior to the course, my computer skills were limited. The program gave me the confidence to learn a variety of programs I use to create my books. I typically begin by illustrating each spread or page. Then I revisit and apply the text, warping it to suit. When all pages/spreads are complete, I create the cover and header pages.

## ***Many locals are big fans of your books, including local author Madeleine Roberts. Where can young readers find your books? (on-line, bookstores, libraries?)***

I am very grateful to the Leigh Library where you can take out my books. They're also for sale at the *Matakana Village Bookstore* and *Paper Plus* in Warkworth, and available to schools and libraries via *Wheelers*.

## ***How can people connect with you and learn more about your books?***

You can find me on **Instagram** and **Facebook** as **thesingingpippi**. I'm also working on a website, **thesingingpippi.co.nz** so watch this space!



# Matakana Grooming Studio

Healthy Pets Naturally  
Karen Person

Mb:027 437 7163  
Ph:09 422 7486  
www.pethaven.co.nz



matakanadoggrooming@xtra.co.nz

## GREEN WASTE GARDEN BAGS

Drop off - Pick up  
from \$30 each

**COMPOST**  
from \$5 bags to trailer loads

Phone **FRICK**  
021 123 0997

Trinity  
CHIROPRACTIC



Chiropractic, Physiotherapy, Nutritionist  
Massage & Health Coaching

For more information or to book a consultation:  
trinitychiro.co.nz or  
call 021980852

RayWhite



CAROL CHRISTY ■

### TRUST | EXPERTISE | RESULTS

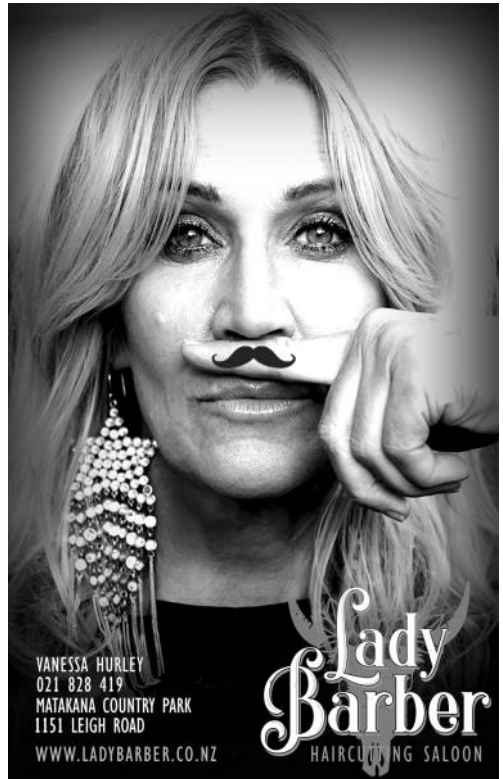
Carol has a tireless work ethic and an unwavering desire to deliver the best results possible for her clients.

Selling? Or simply curious about the local market? Call Carol today!

022-429-8975

[carol.christy@raywhite.com](mailto:carol.christy@raywhite.com)

The Locals Warkworth REAA (licensed 2008)



VANESSA HURLEY  
021 828 419  
MATAKANA COUNTRY PARK  
1151 LEIGH ROAD

[WWW.LADYBARBER.CO.NZ](http://WWW.LADYBARBER.CO.NZ)

Lady  
Barber  
HAIRCUTTING SALOON

# LEIGH PRESCHOOL

Summer holidays are over and our beautiful community preschool is open once again. We'd like to officially welcome our new centre manager, Tonia MacRay, who has moved to the area from Whakatane. Tonia brings with her a wealth of experience in early childhood education and management, and we are so happy to have her on board. We'd also like to extend a very warm welcome to Annemarie Gambescia our new administrator and Kylie Cooper who joins our teaching team this term. And of course a big welcome back our wonderful kaiako Michelle, Rochelle, Ruby, Kororia, whaea Marie, and Wendy who have returned this year with fresh energy and enthusiasm. Our Tamariki are in great hands!

Our big tribe is also growing... The **Leigh Preschool Committee** will hold their AGM next month and are on the hunt for new committee members. This is open to anyone in the community and we are especially keen for people with a **knowledge of accounting or a background in education** to step forward and help our community preschool flourish. If you know anyone who might suit, please give them a nudge in our direction.

As a community preschool, we wouldn't be what we are without our community so we are always keen to hear from anyone who has special skills or interests they'd like to share with us. This term we would love to see our carpentry station grow! If anyone has carpentry skills and would be willing to donate their time, ideally on a regular basis, we would love to hear from you! Our centre has a great carpentry table with many tools available for creating and learning, and our tamariki would benefit hugely from an experienced hand or two.

We hope to resume outings to the Leigh Library and hiko around the neighbourhood, so please do continue to make our tamariki feel safe and at home when you see them out and about - they love a good chat! Our little tribe is growing! We welcomed 7 new tamariki so far this term! We have spaces available, please email [info@leighpreschool.co.nz](mailto:info@leighpreschool.co.nz) to learn more. *Lucy van Oosterom*



---

## **HELPFUL COMMUNITY CONTACTS**

**for emergencies dial 111 and ask for police, ambulance or fire service**

**Auckland Council** 09 301 0101 toll free

**Auckland Transport:** public transport enquiries 0800 103 080

**Healthline** 0800 611 116 for 24-hour medical services

**Graffiti Coordinator** – Lionel Anderson 021 795 306 call or txt with location of graffiti

**Lifeline Helpline** Call 0800 543 354

**Northlink Health** enquiries for Home Help Ph 0800 425 999

**North Shore Hospital Emergency Care** 0800 809 342

**Orca Hotline** Call 0800 733 6722 to report orca sightings.

**Police Non Emergency** Dial 105 theft, vandalism, shoplifting, lost property, stolen cars, drugs etc. or 0800 105 105

**Warkworth Police Station** 09 425 8109 8am-4pm Mon - Fri

**Shorecare Accident & Medical:** 24/7, Sovereign House, Smales Farm

**Takapuna National Poison Centre:** 24 hrs advice 0800 764 766

**Water emergencies** dial 111, ask for police assistance

# THE PENGUIN PROJECT

It was a fun morning at the Leigh Library book sale on Saturday the 27th of January. We were delighted to be invited. The theme was *conservation, sustainability and recycling* with additional representation from *Forest and Bird* and *Waste Free Leigh*. Our table was brimming with educational information, colouring pages and activities for the children, and of course our wee Korora mascot.



Neil Sutherland and I took great delight in talking to many people interested in conservation or who were just generally intrigued by our Korora Little Penguins, and their fragile habitats. It was truly heart-warming to see how many people were aware of the situation in the Hauraki Gulf and our coastal environments.

The overwhelming, and concerning data from this breeding season is that we only have a handful of penguins to monitor (nesting in and around Leigh and Ti Point). It seems apparent that weather events, human and other environmental factors have taken a huge toll. Because of this, it's imperative to support pest control, data collection and education initiatives to preserve their precious habitats. This will make an impact on reversing current trends. It was lovely to hear so many express an interest in volunteering, we're so thankful.

A wonderful highlight of the morning was The Leigh Penguin Project's donation of children's books to the library. The following new titles are now available to borrow: *Wobble, Waddle, Toddle* written by Anne Hunter and Illustrated by Dave Gunson Korora and *The Sushi Shop* by written by Linda Jane Keegan and illustrated by Jenny Cooper, *Wild Coasts, Exploring Aotearoa's Marine Reserves* written and illustrated by Ned Barraud. A huge thank you to the Leigh Library team, particularly Wendy and Jenny for making this event so special.

warmest regards,  
Madeleine Roberts

[leighpenguins@gmail.com](mailto:leighpenguins@gmail.com)

**DOG OWNERS! KEEP YOUR DOG LEASHED ON COASTLINE TRAILS**

## COASTAL PAINTERS

Interior/Exterior

*Leigh & Surrounding Areas*

**Call David 021 156 3461**

**[David@coastalpainters.nz](mailto:David@coastalpainters.nz)**



**ALLEN  
ELECTRICAL  
LIMITED**

Electrical | Refrigeration | Heat Pumps  
(Residential and Commercial)

**Call Ray**

**021 025 22294**

**Email [r.allen@xtra.co.nz](mailto:r.allen@xtra.co.nz)**

PO BOX 35, LEIGH 0947

# WASTE FREE LEIGH & SEWING GROUP

From Feb 1st there have been changes to standardise recycling across the country. For soft plastic recycling please remember we only accept clean, dry and empty bags and packaging. Food scraps and liquid will contaminate all the other bags in the bin. Hard plastic and metal objects will damage our processing plants. We do NOT accept compostable plastic bags or plant based plastics. Please note the following guidelines and remember that lids should never be put in any recycling bins:

## Items with numbers 1, 2, 5 printed inside a triangle:

- 1 – water, juice and soft drink bottles
- 2 – milk, shampoo and cleaning product bottles
- 5 – large yoghurt containers and ice cream tubs  
rinse and do not squash



## New items excluded from 1 February 2024:

- items less than 50mm (e.g. caps, small cosmetic and spice containers)
- aerosol cans (steel and aluminium)
- liquid paperboard (Tetrapak and juice boxes)
- plastics 3, 4, 6 and 7
- aluminium foil and trays
- all lids
- items over 4 litres

Clean/dry cardboard, paper, bottles, and tin cans are also collected in your street side recycling bin. Please drop aluminium cans in the bag supplied at Leigh Hall, this contributes to funding for Hall equipment. The **Waste Free Sewing Group** meets **Monday and Thursday 9.30am to 11.30am at Leigh Hall** rooms on Cumberland St. or by arrangement.

## THE LEIGH HALL

The Leigh Hall is an ideal venue for family gatherings, group meetings, or indoor events (up to 120 people). There are excellent kitchen facilities, offering crockery, glasses, and cutlery. Get in touch today to book. The Hall committee is interested in offering more recreation, arts, music, health, sports and fitness sessions. If you need a space to hold classes or events, please get in touch. New groups can enjoy a free trial of the space while building a following. Over the next few months we will be hosting members of Whangateau Hall because their building is being renovated. Please come and support their events. One will be the **Whangateau Folk club night on March 25th**. Always a great night!

**BOOK THE HALL:** email or phone **Lynn Mellsopp**  
**leighbhalluckland@gmail.com 027-286-8625**

*Tanya Svendsen*  
Licensed Salesperson

m: 021 677 744  
p: 09 425 0261  
e: tanya.svendsen@remax.co.nz

**RE/MAX Realty Group**

Each office independently owned and operated - Licensed REAA 2008 - Northern Properties Limited



# LEIGH VOLUNTEER FIRE BRIGADE



Brave the Shave Fundraiser - Frick Atkins, Gabe Ranson photo Rachel Thompson

Happy New Year, Leigh! We have had a couple of extremely busy months with 18 callouts in December and a near record-breaking 19 callouts in January (equal with January 2022). December callouts included 10 medical calls in Leigh (7), Whangateau (2) and Ti Point (1); four fires in Leigh (2) and Ti Point (2); three motor vehicle incidents in Leigh, Whangaripo, and Big Omaha; and one rescue at Ti Point. January callouts included 13 medical calls in Leigh (10), Whangateau, Ti Point, and Pakiri; two motor vehicle incidents in Leigh and Whangateau; three fires in Leigh, Whangateau, and Matakana; and one follow-up call to clean up debris from a fire.

Thanks to everyone who made our recent **Brave the Shave** fundraiser such a success. We are absolutely amazed and humbled by the response from our wonderful community! We raised over \$36K, well beyond our target. Heartfelt thanks to Frick and Gabe for donating your time and hair- this event would not have been possible without you! Huge thank you also to Shanelle (Smith Hairdressing) and Vanessa (Lady Barber) for generously giving your time to this event, which again would not have been possible with you. Massive thanks to Lee Fish, Matakana Butcher, Summer Sessions, and Stihl Warkworth for donating food and prizes for raffles. Big thanks to local band *Salty Sea Dogs* (Timmo, Andy and Jimmy) for keeping the event pumping with good tunes. What a success! Thanks again to all of you for your support! We feel so grateful to Leigh's incredibly generous community.

The annual **Raft Race** is back! The event will be held on **March 16<sup>th</sup> at Whangateau**. Be there at **12pm for a 12:30pm start**. \$10 donation per raft. Please follow our page on Facebook or Love Leigh to read the rules and get updates. Prizes and sausage sizzle to follow the race- hope to see you there!

We would like to extend a warm welcome to Erika Ciprian who attended training for a few months and was sworn into the brigade recently. Great to have you on board! Lastly, the weather has been quite dry and windy. If you are **planning a burn-off it is important visit [checkitsalright.nz](http://checkitsalright.nz)** first to check the fire season and ensure weather conditions are suitable. **Always supervise your fire** until completely extinguished. As always, stay safe Leigh and thanks again for your support!

**Facebook:** leighfire **Instagram:** leighfirenz

As always, stay safe Leigh! Hayley Nessia, Community Engagement

# PEST FREE LEIGH

## Monitoring

Our quarterly tracking tunnel survey (footprints on ink cards) revealed that rats ran through 13% of our tunnels, compared with 15% during the same time last year. Fewer hedgehogs (pictured below) were detected in tunnels compared with earlier surveys, only 4% this year compared with 37% in Feb 23. Mice were detected in 32% of tunnels, the highest rate to date. By identifying roaming animals, we can modify traps to specifically target these pests. This year bird counts will also be monitored.

## Pest Control in Rural Leigh

Big plans are in the works to extend pest control into the rural hinterland surrounding Leigh. Other groups such as the Leigh Harbour Valley Society, the Leigh Penguin Project and The Forest Bridge Trust, will help facilitate trapping in conjunction with rural landowners. A new part-time contractor has been engaged to advance this phase. Get in touch if you want more information.

Visit us at the **Leigh Library** on **Saturday 2 March from 10-12** and chat to our team. Volunteers are the life-blood of Pest Free, and we are always looking for more! Tasks range from checking traps, to counting birds. There is a role for everyone. If you would like to get involved, or would like a rat trap please email us! **pestfreeleigh@gmail.com**

Stay Safe and Happy Trapping!



**SECTION SERVICES**  
**TREE REMOVAL & PRUNING**  
**GENERAL GARDEN**  
**MAINTENANCE**

insured | experienced | local  
**GET A QUOTE TODAY**  
Dom Guzzo  
021-222-1223 [dguzzo2000@yahoo.com](mailto:dguzzo2000@yahoo.com)

 **webster|malcolm|law**

**Trusted**  
**Approachable**  
**Experienced**

15 Neville Street, Warkworth  
**09 425 8037**  
[info@webstermalcolm.co.nz](mailto:info@webstermalcolm.co.nz)  
[www.webstermalcolm.co.nz](http://www.webstermalcolm.co.nz)

# THE LEIGH COMMUNITY PATROL



Leigh continues to host many holidaymakers, including tourists (local and overseas) and bach owners. The fantastic weather has surely been a big drawing card. A far cry from last year's devastating tropical downpours and cyclones. This is more like the summers we remember. We are here to help visitors settle in, stay safe and understand regulations pertaining to issues like fishing quotas and camping. If you have question regarding public safety, or are aware of an incident that requires support, please contact us.

There have been reports of thefts in visitor vehicles at Goat Island and mailbox thefts throughout the area. Please be extra vigilant. Keep your belongings secure and doors locked. Keep your mailbox clear. Ask neighbors to clear your mail, and keep an eye out when you are not there. If you see something, say something.

The Patrol maintains a strong presence in the community to deter such activities. You'll often see our vehicles driving by carefully, as we take note of anything concerning. We liaise directly with the Warkworth Police. They advise that if you witness or are part of an active/urgent incident please report it directly to the **Police via 111**. For **non-urgent incidents dial 105** or call the local **Warkworth Police Station 09 425-8109**.

We are a volunteer organization, servicing Leigh, Pakiri, Whangateau, Ti Point, Goat Island and Matakana. Thank you for your continued support and positive feedback! It is very rewarding work.

To join the Patrol, contact Julie George our secretary, at [leigh@cpnz.org.nz](mailto:leigh@cpnz.org.nz)

## LEIGH BOWLING CLUB

The new year began with the Handicapped Singles on January 6<sup>th</sup>. The two finalists were Staun Popham and Ron Heaton. Ron played a very consistent game, but Staun successfully executed exceptional bowls that kept him in touch. The players stayed close to the last end until one skillful bowl by Staun clinched the title. Staun is one of a number of younger players in the Club who are making their mark in Club events. The recent Wally Yovich Tournament included 18 teams. The Warkworth Club won the day. The team consisted of Neil Cruden, Steve Suric and Tom Gowie. Congratulations guys. The weather remained consistently sunny and warm for the Club's Triples Champs. George Brooks, Scott Wilson and Lindsay Duncan played against Kerry Hyde, Staun Popham and Dave Hickey in the final. Once again the majority of these players were younger Club members. We extend our congratulations to George, Scott and Lindsay, for winning the Cup. We are currently organizing caterers for Wednesday and Friday evenings, to offer regular meals on these days. **The Bar is open Wednesday to Saturday nights from 4pm**. All are welcome – also for a roll-up.

# LEIGH COMMUNITY RESILIENCE GROUP

## EMERGENCY WATER SUPPLY

After three years of La Niña's wetter climate cycle, we are now entering the El Niño weather pattern which is predicted to be much drier. Auckland City Council's (ACC) community **water bollards** give rural communities access to clean drinking water throughout the drier months. There is one at **4 Cumberland Street, Leigh**, located at the lower side of the **Leigh Hall**. When there is no predicted rainfall and/or a long wait for water deliveries, the ACC will make water available for free to the community by attaching hoses to the sides of the water bollards. 20 litres per person per day is allotted for each household.

The ACC will advise the community when the hoses are connected, however if there is an urgent need you can contact the ACC and request activation.

**Auckland City Council: 09 301 0101**  
**HWCustomerandcommunity@aucklandcouncil.govt.nz**  
enquiries to **Lynn ph 027-286-8625**



*Auckland City Council Water Bollards*



after-school, weekend art classes and children's holiday arts programs

Adult relaxation Painting Saturdays  
1-3pm. Contact for details!

**17E Totara Ave Leigh NZ 0985**

**Mobile 021-0891-6855**

foundationleighnz@gmail.com

**FaceBook: Foundation Gallery & Arts Hub**

**Instagram [FoundationGalleryNZ](#)**

**GET A QUOTE TODAY**



**MORRELL**  
CONSTRUCTION  
REVOLUTIONS  
ALTERATIONS  
CONSULTANCY

**John Morrell**

021 663 496 | johnm674@hotmail.com  
Grand View Road, Matheson Bay



**RODNEY  
SEPTIC  
TANK CLEANING**

**PETER CAIRNS**

**Telephone: 09 422 7166**

**Moblle: 0274 946 370**



# LEIGH BAR

EST 2014

OPEN TUES - SUN 4 PM ONWARDS

TUES | Burger & Beer  
WED | Big Rib Night  
THR | Chef's Special  
FRID | Happy Hour  
SAT-SUN | Sports Weekend

21 HAURAKI RD, LEIGH - (021) 0419-242

## BUILDING SERVICES



FENCES | DECKS | CARPORTS  
WATERBLASTING | PAINTING

all work considered

30 years experience

call Bryn today

**022-636-9801**

## CHAPPELL PRINTING DIGITAL PRINT CENTER

LAZER PRINTS | COPIES | BINDING  
LARGE FORMAT | SCANNING  
SCAN FROM PRINTS  
LAMINATING  
CANVAS PRINTS

Ray Chappell

0274-300-447 | [chaprint@xtra.co.nz](mailto:chaprint@xtra.co.nz)



**MATAKANA GLASS**  
**TOP GLASS SERVICE**  
**FAST FRIENDLY**  
**WINDOW REPAIRS**  
021 - 027 - 81204  
[www.matakanaglass.nz](http://www.matakanaglass.nz)



- + Window Cleaning
- + Waterblasting & Driveway Care
- + Home & Building Washing
- + Roof Treatments
- + Gutter Cleaning

For a Free Quote visit our website!  
[squeegieboys.co.nz](http://squeegieboys.co.nz)

# COASTAL RESTORATION GROUP

A delightful book has just been added to the Leigh Library collection called *Tree Sense - Ways of Thinking About Trees*. Its appeal is that it presents a whole range of views about the place of trees within our communities. In Leigh there are differing opinions about the position and importance of trees, and this quietly provocative compilation gathered by Susette Goldsmith covers most of them. Each article is by a prominent New Zealander. Great autumn reading!

It is **mothplant eradication** time. For years now we've been trying to stop its spread to Hauturu/Little Barrier island, and we're winning. Please check your property and surrounding places.

- ◆ Mothplant is a vine that suffocates other plants.
- ◆ It has beautiful little creamy coloured flowers which are now starting to form into choko like pods, and tendrils stems.
- ◆ It must be removed before the pods ripen.
- ◆ You need to trace the stem back to the root and either get the root out, or cut and paste the stem with weed killer just above ground level.
- ◆ When dealing with mothplant WEAR GLOVES, the sap can be caustic on your skin.



Please join us with this community eradication project. Mothplant (Kapok Plant) needs to be removed now. Contact me if you need advice.

Neil Southerland, [corsut15@gmail.com](mailto:corsut15@gmail.com) (email to get onto our mailing list)

**LEIGH  
RAG**

## LETTERS TO THE EDITOR

Do you have something to share? Start the conversation by submitting a short essay (less than 500 words) on a local matter that is well-researched, based in fact, useful for the community to know and solution focused. The essay should challenge, engage and/or delight readers, offering a different point of view that opens a window into an issue they were otherwise unaware. Include an explanation of your professional or personal background that supports your opinion or idea.

send with the subject line 'op-ed' to Lee at the [leighragnz@gmail.com](mailto:leighragnz@gmail.com)

soups    bone broth    dressings

**www.abitdressy.co.nz**

**ORDER ON-LINE TODAY**  
also available at Matakana Market

FB & Insta @ abitdressy

greenscapes    landscape construction    mini excavation



rochford landscapes

[www.rochfordlandscapes.co.nz](http://www.rochfordlandscapes.co.nz)

call today 021-939-117 [todd@rochfordlandscapes.co.nz](mailto:todd@rochfordlandscapes.co.nz)

*specialist in outdoor construction and tight access earthworks*

## NOMINATE A LOCAL GOOD SORT!

The Leigh Community Church has run the *Good Sorts* column since 2013. Nominate someone by writing a few words about their good deed or thoughtfulness, including their name, address and phone number and drop it into the **Leigh General Store** in an envelope marked "**Good Sort**" or **email the Editor at [LeighRagNZ@gmail.com](mailto:LeighRagNZ@gmail.com)**.

***The person considered most deserving will receive home baking courtesy of Leigh Community Church***

## GOOD SORTS



This month's GOOD SORT is **Kent Maccarthy** who went out of his way to assist a beach visitor this summer. She had devastatingly lost her engagement ring in the sand at Matheson Bay and miraculously, after more than one search, Kent was able to find and return it. Thanks also to the many other locals who helped search. Our community is surely blessed to have you all here. Kent, you have home-baking coming your way from Leigh Community Church!



Auckland Council approved  
for septic servicing



# HAUS

PLUMBING BY DESIGN

**10% OFF**

Labour rate for  
SuperGold Card  
holders



0800 888 380



[info@hausplumbing.co.nz](mailto:info@hausplumbing.co.nz)

## LEIGH GENERAL STORE OPEN 7 DAYS

- ▶ Groceries
- ▶ Ice Cream & Drinks
- ▶ Fresh Fruit & Vegetables
- ▶ Magazines, Postcards & Films
- ▶ Free Range Eggs
- ▶ Hardware & Seeds
- ▶ Bait & Fishing Gear
- ▶ Wine

EFTPOS AVAILABLE  
Phone 09 422 6034

## INSURANCE



# NAUTICAL

BOAT INSURANCE - better premiums  
and a comprehensive cover  
Ph 03 384 1694 • 0508 NAUTICAL

email: [insurance@nautical.co.nz](mailto:insurance@nautical.co.nz) • [www.nautical.co.nz](http://www.nautical.co.nz)

# EARTHPRO MATAKANA LTD

## TRUCKS ▪ DIGGERS ▪ METAL

driveways ▪ house sites ▪ hard landscaping ▪ ponds ▪ section clearing  
farm drainage & race maintenance ▪ commercial site preparation  
drilling ▪ rock breaking ▪ retaining walls ▪ and all other earthworks

### 021 557 873 ▪ [earthpro63@gmail.com](mailto:earthpro63@gmail.com)

We cover Rodney ▪ 25 years experience ▪ Locally owned & operated ▪ Quality & Service Guaranteed



• WATER PUMPS  
• WATER TANKS  
• SPA & POOLS

**SPLASH**  
WATER SPECIALISTS

• SALES & SERVICE  
• WATER BLASTERS  
• FILTRATION SYSTEMS

MM179

## GRUNDFOS

AUTHORISED AGENT

We also offer the following:

- ◆ Water Filters
- ◆ Pool Valet Service
- ◆ Water Testing
- ◆ Water Treatment
- ◆ Spray Equipment
- ◆ Mobile & Workshop Services

31 Woodcocks Road, Warkworth ◆ Phone 09 425 9100  
E: [splashwater@xtra.co.nz](mailto:splashwater@xtra.co.nz)

# WHANGATEAU HALL

**Whangateau Hall will be closed for refurbishment between February 19th and May 31st.** During this time, there will be no public access to the hall. **Whangateau Folk Club will be meeting at LEIGH HALL** while refurbishment is underway. The next Folk Club night is **March 25th.** Keep up to date on events by going to [www.whangateau.co.nz](http://www.whangateau.co.nz) and subscribing for email notices. (For additional information contact Jennie Abarbanel [jnine@torkington.com](mailto:jnine@torkington.com)).

New Zealand-born, **Nashville-based fiddler George Jackson** and **Baltimore based American banjoist Brad Kolodner** met years ago in a late-night jam session at the hallowed Appalachian String Band Music Festival in West Virginia. They have since formed a musical bond that runs deep, across continents and through a number of recorded projects. From the moment the fiddle bow hits the strings and the fingers grasp the fretboard, George and Brad are locked in, weaving their way through ancient melodies made new again. From trance-inducing moody original tunes to classic barnburners, their show offers something for serious and casual folk music fans alike. They play with a mischievous curiosity that keeps listeners on the edge of their seats wondering where they'll go next.



This will be an incredible evening of outstanding Americana music and not to be missed! **FEBRUARY 20th, Tickets are \$20** and you can reserve your seat by emailing [whangateaufolk@gmail.com](mailto:whangateaufolk@gmail.com). Doors open at 7:00pm and the show starts at 7:30pm.

And mark your calendars for **FOLK CLUB NIGHT** at the Leigh Hall on **March 25th!**

**Leigh Hall is located at the corner of Seatoun Ave and Cumberland St. in Leigh, just 5km from Whangateau Hall.**

## ARCHITECTURAL DESIGN & DRAFTING SERVICES

RESOURCE & BUILDING  
CONSENTS  
CONCEPT DESIGNS

NEW BUILDS | ALTERATIONS | ADDITIONS

**Geoff Alexander**

(NDAT) LBP# 123496

[alex.g.h@xtra.co.nz](mailto:alex.g.h@xtra.co.nz) (09) 422-6624



<b>Monday</b>	Closed
<b>Tuesday</b>	8:00 – 3:00
<b>Wednesday</b>	8:00 – 3:00
<b>Thursday</b>	8:00 – 8:00
<b>Friday</b>	8:00 – 8:00
<b>Saturday</b>	8:00 – 8:00
<b>Sunday</b>	8:00 – 8:00

18 Cumberland Street (09) 422-6035

bali  
garden

WELLNESS  
STAY  
EVENTS

292 point wells road  
matakana

see website for yoga schedule  
[www.baligarden.nz](http://www.baligarden.nz)

TT

STOCKISTS

Leigh Eats

Matakana Farmers Market

Point Wells General Store

Charles Gelato

Matakana Liquor Center

Northern Waters Oysters

TURBO TONICS

WWW.TURBOTONICS.CO.NZ  
local natural anti-inflammatory



HELP MAKE OUR COMMUNITY  
**PREDATOR FREE**  
GET A FREE TRAP TODAY  
[pestfreeleigh@gmail.com](mailto:pestfreeleigh@gmail.com)

COURIER PACKAGES

Leigh Motors is the official Drop-off & Pick-up point for NZCourier  
**Leigh General Store for NZ POST**  
Monday to Friday Collect at Leigh General Store or Leigh Motors



In the heart of Leigh Village

*five stylish self-contained motel units five boatshed cabins  
all with a retro beach vibe—Boutique Motorhome/Caravan Park*

*Function and Events Venue*

[www.leighcentral.co.nz](http://www.leighcentral.co.nz)

Phone: 09 422 6070 Mobile: 021 246 0757

**KNITTING**  
at  
**Leigh Library**  
**Thursdays 2-4pm**  
**tea and coffee too!**  
**all welcome**



foundational, preventative  
corrective therapies that  
restore health & wellbeing

nutrition & health  
hair testing & analysis  
emotional rebalancing  
cleansing & support programmes  
immunity/health check

*practitioner only supplements available*

## **Shadze of Lace**

Sizes 10-22  
locally designed/made clothing

Dressmaking/Alterations/  
Repairs

15 Elizabeth St,  
Warkworth

ph: 09-425-0515  
[www.shadze.co.nz](http://www.shadze.co.nz)

## **Leigh Church Services**



**11 AM FOLLOWED BY A CUPPA**

**ON THE 1ST, 2ND + 3RD  
SUNDAYS  
EVERY MONTH**

**ALL DENOMINATIONS AND  
VISITORS WELCOME**

# MATHESON BAY NEWS

## FINDING COMMUNITY WITHIN A GARDEN

special contributor: Lydia Smith



*Matheson Bay Community Garden—photos Lydia Smith*

The Matheson Bay Community Garden is a pilot project in the Kendale Reserve (behind Leigh Rd, bordered by Grand View Rd and Kendale Dr) consisting of around six garden beds and a compost bin made from pallets. Started in 2023, members of the small garden committee are Lee Parker, Sue Maloney, Rachel Thompson, and Karen Davies whose properties back onto the reserve. They have been involved in creating and maintaining the garden (spearheaded by Lee) but interested residents are welcome to join in.

I have visited the garden several times to meet and talk with Lee and to donate compost and seedlings. Recently I met with Rachel and Sue for a chat and to see what's growing. I came away with apple cucumbers, regular cucumbers and zucchini! I think the garden is a positive way to meet interesting people in the community and to share the joy of growing vegetables together. Being a long-time weekender at Matheson Bay, I would prefer to garden with others and share resources, plants and ideas about gardening rather than on my own at a beach house which isn't always occupied (especially when watering is needed).

Lee and the team have done an amazing job in getting this garden established. They have set up a private Facebook page called *Matheson Bay Community Garden* which you can join. She keeps us up to date with news from the garden; what is growing and what you can contribute. The garden is perfectly positioned at a high point on the reserve with foot access from Leigh Road.

They follow British gardener Charles Dowding's *No Dig Gardening* principles which meant starting with laying down cardboard directly on the ground and adding layers of manure and compost into which seedlings are planted.



At present there is a lot of variety in the produce like lettuce, asparagus, basil, cucumber, beans and more. A couple more compost bins and a water pump are currently in the works. So much more than I would have in my garden.

If you are interested, do join the Facebook group to get involved and up to date. Lee has copies of Charles Dowding's books (pictured) which she is happy to lend out to anyone interested in learning more or wanting to try these methods for themselves. You can email her at [aaparker66@gmail.com](mailto:aaparker66@gmail.com) or at [leighragnz@gmail.com](mailto:leighragnz@gmail.com).



**Ti Point**

# Reptile Park

**27 Ti Point Road  
LEIGH**

please check website for opening hours | <https://www.reptilepark.co.nz/>  
Adult \$22 - schoolchildren \$12 - preschooler - no charge - family pass \$60  
**enquiries@reptilepark.co.nz | 022 350 719**



**Leigh  
Motors**



**fuel up 24/7  
vehicle repairs  
WOF & servicing  
batteries  
tyres  
trailer hire  
bait & ice  
gas bottle swap**

**20 Cumberland St, Leigh  
(09) 422 6077  
leighmotors2017@gmail.com**

## **keep it local**

**FOLLOW US ON FACEBOOK FOR NEWS, EVENTS AND THE GOS**

**WWW.FACEBOOK.COM/LEIGHRAGNZ**



**Have an upcoming event?**

**Get the word out! Put it in  
THE RAG!**

**email us today**

**leighragnz@gmail.com**

# COMMUNITY EVENTS CALENDAR

DATE	EVENT	TIME	\$\$	PLACE
20 Feb	Music: George Jackson & Brad Kolodner <i>(Whangateau Hall Event)</i>	7:30pm	\$20	LEIGH HALL
23 Feb	Night of Fleetwood Mac	8:00pm	\$25	Sawmill Cafe
29 Feb	How to Look After Textiles warkworthmuseum@xtra.co.nz	10-12pm	\$20	Perry Kauri Park Warkworth
2 Mar	Pest Free Leigh   open day	10-12pm	n/a	Leigh Library
16 Mar	Fire Brigade's RAFT RACE	12:00pm	\$10	Whangateau
17 Mar	Church Annual Harvest Stall	8:00am	n/a	Leigh Gen Store
25 Mar	Whangateau Folk Club	7:00pm		LEIGH HALL
WED Nights	Business House Competition			Bowling Club
SUNDAYS	Club Days	2:00 PM	n/a	Tennis Club
MONDAYS	Yoga Meditation	6-7:15pm	\$0-10	Snells Beach C.Ctr.
THURSDAYS	Friends of the Mill Pizza Nights	4pm +	n/a	Sawmill Cafe
Fri-Sun	Leigh Summer Store	10-6pm	n/a	19 Hauraki Rd

## REGULAR WEEKLY EVENTS

WHAT	DAY	TIME	DETAILS
Waste Free Leigh/Sewing Group	Monday	9:30 - 11:30	drop-in non sewers welcome
Yoga	Tuesday	9:30 - 11:30	Marion 021-111-9104
Nia Nia Technique Holistic Fitness	Wednesday	8:00 - 9:00	Amara 0221-696-481
Advanced Contemporary Dance	Thursday	8:30 - 9:30	
Waste Free Leigh/Sewing Group	Thursday	9:30 - 11:30	drop-in non sewers welcome
Knitting at Leigh Library	Thursday	2:00 - 4:00	all welcome
Nia Technique Holistic Fitness	Friday	9:00 - 10:00	Amara 0221-696-481

\* Nia Technique Holistic Fitness is a fusion fitness practice, blending marital arts, dance arts and healing arts. It explores well being and wellness through movement. All ages and abilities are welcome.

# LEIGH RAG

**LOCAL ADVERT = LOCAL BUSINESS**  
**starting at \$100 for 11 issues**

email for more info: [leighragnz@gmail.com](mailto:leighragnz@gmail.com)  
 follow us on FaceBook

[www.facebook.com/leighragnz](http://www.facebook.com/leighragnz)

# Community Directory

**Forest & Bird Coastal Restoration Group** - 022-582-2713 Neil Sutherland

**Leigh Bowling Club** - 021-423-144 Ian Bradnam (secretary)

**Leigh Business Community**— leighbytheseanz@gmail.com www.leighbythesea.co.nz

**Leigh Cards 500** - 1:00 - 3.30pm Tuesday, Leigh Bowling Club, all welcome, \$3.00

**Leigh Cemetery Trust** - 027-277-7594 Diti Hill-Denee

**Leigh Church** - 425-8054 (call to book the Church Hall)

**Leigh Community Club** - 021-352-588 leighcommunityclub@gmail.com Guy Parkes (pres)

**Leigh Community Patrol** 021-827-855 leigh@cpnz.org.nz Julie George (secretary)

**Leigh Community Preschool** - www.leighpreschool.co.nz 422-6516 Lucinda van Oosterom

**Leigh Hall** - 027-286-8625 leighhallauckland@gmail.com Lynn Mellsopp

**Leigh Harbour Valley Society** - 422-6880 www.leighharbourvalleysociety.org.nz

**Leigh Library** – 021-024-13144 / 422-6409 Jenny Stewart (librarian)

**Leigh Penguin Project** - 0275-658-817 leighpenguins@gmail.com

**Leigh School** - 422-6031 www.leigh.school.nz Georgia Brebner

**Leigh Tennis Club** – leightennisinc@gmail.com Marie Dominique Lennan (pres)

**Leigh Walking Group** - paddis@xtra.co.nz Valda Paddison (meet Monday at 9.30am)

**Matheson Bay Neighbourhood Assn** - mathesonbayassn@gmail.com Yvonne Keesling

**Pakiri Community Landcare Group** - 021-688-997 (Frankie) or nick@nickmolloy.co.nz

**Pakiri Tennis Club** - 021-242-7459 Linda Taylor (Secretary)

**Pest Free Leigh** - pestfreeleigh@gmail.com FB: www.facebook.com/groups/pestfreeleigh

**Plunket** 027-290-1915 Adele (meet 1st Monday of month Leigh Church Hall Contact)

**Rodney Rams Rugby League Club** - 021-0205-8098 Daphne Were rodneyrms@outlook.com

**Tawharanui Open Sanctuary Society** - 585-1315 [www.tossi.org.nz](http://www.tossi.org.nz) Karyn H. secretary@tossi.org.nz

**Waste Free Leigh** 021-484-432 helenp708@gmail.com Helen Parkes

**Whangateau Acoustic Music & Social Club** - www.whangateau.co.nz

**Whangateau Neighbourhood Support** – sharyncarew@vodafone.co.nz Sharyn Carew

**Whangateau Residents & Ratepayers Assn | Whangateau Hall** - 422-6209 Audrey

Sharp or Hugh McKergow 422-6219, *book the Hall*: 021-428-568 Jenine Abarbanel  
whangateauhallbookings@gmail.com

## **JUSTICES OF THE PEACE & CELEBRANTS**

**JP** - Fay Bradnam 422-6038

**JP** - Jon Everest 021 354 708

**JP** - John Marsden 489-0193, 021-509-463

## **FACEBOOK**

**Leigh Community Club** - [www.facebook.com/leighcomm/](http://www.facebook.com/leighcomm/)

**Leigh Community Patrol** - [www.facebook.com/leighcommunitypatrol](http://www.facebook.com/leighcommunitypatrol)

**Love Leigh** - [www.facebook.com/groups/loveleigh/](http://www.facebook.com/groups/loveleigh/)

**Leigh by the Sea** - [www.facebook.com/leighbythesea](http://www.facebook.com/leighbythesea)

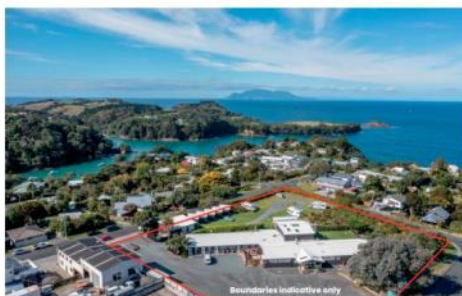
**Leigh Historical Photographs NZ** - [www.facebook.com/groups/739949979454558](http://www.facebook.com/groups/739949979454558)

**Leigh Rag** - [www.facebook.com/leighragnz](http://www.facebook.com/leighragnz)

**IF YOUR CLUB OR GROUP DOES NOT APPEAR, PLEASE EMAIL US: LEIGHRAGNZ@GMAIL.COM**

**Marie-Dominique**021 490 039 | [marie.lennan@ljhooker.co.nz](mailto:marie.lennan@ljhooker.co.nz)**22 Barrier View Road**

Breathe, hear, and see the ocean from this 809 m2 section with plans.

**For Sale** By Negotiation**View** [ljhooker.co.nz/FOQHAY](https://www.ljhooker.co.nz/FOQHAY)**22-28 Cumberland St**

Leigh Central - Tourism venue with accommodation on 8094 m2.

**For Sale** By Negotiation**View** [ljhooker.co.nz/EYUHAY](https://www.ljhooker.co.nz/EYUHAY)**55 M Greenwood Road**Bareland with bush by the Coast  
4.96 Ha.**For Sale** By Negotiation**View** [ljhooker.co.nz/ETVHAY](https://www.ljhooker.co.nz/ETVHAY)**6 Sea View Road**

One level 3 bedroom home with sea views &amp; private backyard on 1093 m2.

**For Sale** by Negotiation**View** [ljhooker.co.nz/EZEHAY](https://www.ljhooker.co.nz/EZEHAY)