

LEIGH RAG

DECEMBER 2023

deadline for local contributions:
15th of each month

email leighragnz@gmail.com

<https://www.facebook.com/leighragnz>

PROUDLY SERVING
Leigh, Matheson Bay, Whangateau, Pakiri
sponsored by the Leigh Community Club

view the Leigh Rag online

www.leighbythesea.co.nz

THE SAWMILL CAFÉ IS BACK

15 DECEMBER — LEE PARKER

The closing of the Sawmill's doors earlier this month signaled the abrupt end of years of mismanagement at the hands of Auckland businessman Craig Anderson. He operated the facility during a tumultuous period, particularly post Covid when the Café's quality and reputation suffered. The Guinness family own the property and are now in full control of operations. The Sawmill will reopen on December 28th. They are determined to honor their late patriarch Grattan Guinness' memory by returning the renowned music venue to its former glory, announced his granddaughter Ella Guinness when we met on site.

The Sawmill was Ella's playground, her little hand and foot forever cast in the beer garden's concrete steps. Her enthusiasm is infectious and I can't help but wonder if the life size chess set is coming back too (pretty please). "Right now the place just needs some love, it doesn't need change, it's famous for what it's always been." Agreed. Grattan and his family put the Sawmill on the map decades ago by keeping it simple. The combination of great food, local brews, chilled vibes and edgy gigs appealed to locals and visitors alike. Eventually bands from all over the world graced its stage. Local legends like Fat Freddy's Drop and Tiki Taane cut their teeth here.



"We're holding onto our roots. It's very important (to my family). We're all together on this." The place was buzzing with energy, laptops open, tables stacked up, construction projects all go. Ella tells me I must meet her Uncle Ed (Grattan's son), who's beavering away somewhere by the accommodation wing which is also getting a makeover. A quick poke into a cavernous shed full of flotsam and jetsam, but no Uncle Ed. So we wander back to the beer garden to check out a newly built deck.



construction of the Sawmill's new pizza oven station in the garden bar

Ella beams saying “This is dad’s project (Ben Guinness), he’s so creative. He just wants to do it all and has the vision.” Ben’s deck will house a pizza oven serving up pies the Sawmill became celebrated for, like the *Ella Hart* (my tour guide’s namesake as well as a delicious local favourite). It’s an impressive addition that will brilliantly connect the restaurant and music hall to the outdoor spaces.

More by-gone treasures like *‘Leigh’s Got Talent’* (my neighbour and I are currently working on a harmonica medley), bingo and half price pizza night are also in the cards. “These are the events that brings the community together, it’s what the Sawmill has always done.” says Ella, and may it long continue.

A new website is in the works (the Leigh Rag Facebook page will also provide updates on Sawmill events). New opening hours begin **Dec 28th from noon to late, Thursday to Sunday.**

mark your calendars for upcoming gigs:

Connected NYE Party – Drum & Bass | doors open 8PM

Summer Thieves – 4th Jan (ticket details soon)

Coterie – 11th Jan (tickets available on www.ticketmaster.co.nz)

No Cigar – 13th Jan (check the band’s website)

**LEIGH
RAG**

Have an inspirational local story to share?

Send us a brief essay (less than 200 words) and a jpg image. Include your name, where you live and contact details. Email the editor today with using the subject line “**Local Story**” - leighragnz@gmail.com

ENVIRONMENTAL CHAMPIONS MOVE ON

After 27 years and a recent host of tribute parties, community devotees Jenny and Tony Enderby bid farewell to Leigh, heading south on a new “adventure” in Cambridge (Waikato). Well known for decades of volunteer work, their departure hit like a seismic shock with many wondering how Leigh’s many charitable organizations, some of which they founded, will carry on without them.



During the final farewell last month at Leigh Central, neighbours spoke with shaky voices to honour the Enderby’s decades-long commitment to environmental causes. “Jenny and Tony’s special ability is bringing people together and making them enthusiastic about getting involved” said Neil Southerland from the *Penguin Project*, an initiative founded by the couple. *Pest Free Leigh* chimed in, attributing their success in eradicating 1,300 rodents to date directly to the Enderby’s, saying that they’ll “need twenty people to replace them, we’re building a roadblock to stop them from leaving”.

Jenny graciously brushes all this aside, knowing Leigh has a deep bench of capable volunteers at the ready, “All the local groups just get stronger over time, we’ve seen this happen, there’s always someone that’ll step up and get involved. Because Leigh’s a small place it’s very easy to shoulder tap someone.” True, but a power couple like the Enderby’s are a rare breed. Their volunteer work at Forest and Bird and Tawharanui Open Sanctuary Society (TOSSI) is legendary. Their marine photography, ground-breaking.

Their conservation work began 30+ years ago as guides at Tiritiri Matangi. Wherever an exciting dive opportunity emerged, the Enderby’s were there, “We went to the opening of the Long Bay Marine Reserve because of our love of diving and marine photography, which led to research about what we were seeing in the sea.” On weekends they travelled from Auckland to dive at Goat Island (Cape Rodney-Okakari Point Marine Reserve), eventually becoming Marine Rangers for the Department of Conservation (DOC) to help safeguard the reserve’s natural habitat and educate visitors. They’ve written self-published books adorned with breathtaking underwater photos of marine life specific to the area, some pictured for the first time.

I followed the couple through their neatly packed home on Albert Street. They sunk into matching La-Z-Boy’s, a brand they’re completely at odds with. They began by talking about their passion for writing, diving, marine photography, and their tireless efforts to protect the area’s birds and marine life from predators, poachers, and environmental disasters. Looking out to Omaha Bay and the Hauraki Gulf from their back deck, Tony reminisced about frequently seeing pods of whales when they first settled in. Sadly, he said whale sightings are rare nowadays.

Jenny added that the Little Penguins once waddled along Goat Island’s beach during the day, but now only rarely seen at night in ever decreasing numbers, “Environmental changes are devastating for penguins who are visual feeders. They’re starving because they cannot see their food (small fish), the water is too silty. The problem is unfortunately in the too hard basket, and it’s getting bigger. Another big problem is dogs. Some let them roam free, particularly at night when penguins are out and very vulnerable.” Alarming as this is, Jenny sees the bright side, “Native bird life has improved greatly due to predator controls, and the reserves are thriving.

Environmental Champions (continued)

Tawharanui has Kākā now!” (According to TOSSI, Kākā were threatened when forests were cleared for farming mid last century. After a lengthy process, Tawharanui became predator-free in 2004 and Kākā returned.)

Tony has a journalism background so when a job opened at the Rodney Times he jumped at it. The couple shifted to Leigh. Jenny said “We just kept writing, researching, and taking photos. We sent articles everywhere and they were published.” They became monthly contributors to NZ Dive Magazine. Then they spotted a simple double-sided newsletter produced by the Leigh Bowling Club. *The Leigh Rag* had been around since the 1980’s, but the Enderby’s expanded it, persuading community groups to contribute monthly articles. Murray Coppins, master of a local wine club, created the logo still used today. Tony and Jenny chuckle remembering the many contributors who submitted handwritten articles (occasionally this still happens!) “We were able to get some local advertising and a grant from Leigh Fisheries and the General Store to afford printing. For Anzac Day we always printed in colour.” After eight years and increasing commitments, another community dynamo, Helen Parkes, put her hand up to edit *The Rag*. She did an excellent job for 5+ years before retiring. Tony joked saying “The Rag rumour is, to give up you have to die.” (so far so good)



farewell cake made by Helen Parkes, decorated by Jenny Nicholl at www.forheavenscake.co.nz/



We chat in the kitchen, surrounded by empty cabinets and bare windows except for the majestic view. It’s cold and windy, but we nip outside for a quick photo. I become immediately distracted by Jenny’s glorious Three Kings Vine (*tecomanthe* or *akapukaeka*) and she and Tony fuss to give me a couple generous cuttings. Then we natter on about her ailing avocado tree. She’s smiling, joyously in her element talking about her garden. Monday however is moving day, and the garden will welcome a new family.

“We’re sad about leaving projects, leaving this view, our friends, but Monday is the first day of the rest of our lives, so it’s exciting. We have lived in this place longer than we’ve lived anywhere else, so we’re going to miss it very much. But we’re not disappearing, we’ll be back, we’re just off on a new adventure.” But what about the sea? Cambridge isn’t known for its diving. Bubbling with optimism, Jenny points out that Cambridge is renowned for its bike trails and the Enderby’s are keen cyclists. “We bought a low maintenance house on an easy-care house that backs onto the cycle lane. Cambridge has a greenbelt that’s very established. And Lake Kaipara is only 14K’s away. We’re going to help *Pest Free Cambridge* too and join the local social cycling group. There’s just so much to do!”

Lee Parker

COASTAL RESTORATION GROUP

The year ends on a grand note. After 3 working bees, ten mighty volunteers removed all the *tradescantia* (wandering willie) from the Leigh Coastal Walk to Kowhai Terrace. Some clambered on the slope, while others in gumboots sloshed up the creek removing this highly invasive weed from the banks. Given the success of our native planting project earlier in the year, and the natural regeneration of some significant forest species, eradicating *tradescantia* is another giant step in protecting our fragile ecosystem. This is an important region for plants, birds, freshwater fish, and for the many locals and visitors who enjoy this walkway. Thanks to everyone who has helped with the project this year including weeders, planters, and especially our pest trappers. Thanks to *Warkworth Area Forest and Bird* and Auckland City Council for their support. It's been a good year!

Merry Christmas and Happy New Year!

Neil Southerland, corsut15@gmail.com (email to get onto our mailing list)

Report Community Problems and Safety Issues

Auckland City Council have a range of ways for you to report a problem: **roadside rubbish, facility damage, trees down, paths overgrown, reserve issues** can all be reported online at:

<https://www.aucklandcouncil.govt.nz/report-problem/Pages/report-a-problem.aspx>

HOTLINE 24 hours, 7 days: (09) 301-0101

Illegal fishing ncc@mpi.govt.nz ph: **0800 4 POACHER** (0800 47 62 24)

report a ROAD INCIDENT or UNSAFE DRIVER – *555 and Roadwatch

<https://www.police.govt.nz/advice/driving-and-road-safety/report-road-incident-unsafe-driver>

111 to report a water rescue to Police



LEIGH ELECTRICAL LTD
RESIDENTIAL AND COMMERCIAL

JOE ROBERTS

Phone: 021 220 3717

info@leighelectrical.co.nz

42 Hauraki Rd, Leigh, 0985



**GOAT ISLAND
MARINE DISCOVERY CENTRE**

THE UNIVERSITY OF AUCKLAND
NEW ZEALAND

Te Whare Wānanga o Tamaki Makaurau



**Open
10 to 4pm
weekends, school &
public holidays**
now to 30 Nov

Open everyday
1. Dec to 30 April

09 923 3645

www.goatlandmarine.co.nz

LITTLE FREE LIBRARY



Madeleine Roberts and the Little Free Library located at the bottom of Grand View Road, Matheson Bay.

Rag: *How did the idea for this project germinate? Who was involved and how?*

Madeleine: I went to Vancouver Island, Canada in June, visiting friends. Being it was their summer, we did a lot of walking, and I was amazed how many Little Libraries were dotted in people's front gardens. It was exciting to see kids on bikes or people walking up to these, opening the door and having a peek. But above all, it was lovely to see neighbours engaging with each other, talking to dogwalkers or people passing by, and I couldn't help but to think, what a fantastic community initiative this would be here in Leigh. To get the project off the ground I contacted the wonderful **Warkworth Men's Shed** who designed and built the fabulous little structure. These craftsmen were excited to be part of the community initiative, and I'm so thrilled to see the result.

Rag: *How do you foresee it being used? How does it work?*

Madeleine: The idea is that anyone can pick up a book to keep. If you have a book to donate, and there's room on the shelf that's great, but it's not a must. The exciting thing is that already, with the Community Library being open for such a short time, there are new books donated every day.

Rag: *How is the project funded?*

Madeleine: I'm very humbled for the incredible support the local community have given me as a local author, and felt that I wanted to give back in a small way. Thus, I have donated part of my book sales this year to fund and make this project happen. I'm a bookworm and love reading. To make books easily accessible, and at the same time create a talking point and a hub seemed like the a great way forward.

Rag: *Small roadside Libraries began in neighbourhoods all over the U.S. since the early 2000's before spreading abroad. Is this part of the Little Free Libraries global network?*

Madeleine: Our community Library has only just opened, but will be registered on both the Little Free Libraries website in New Zealand and on the world wide Little Free Library network.

Rag: *Are you collaborating with the Leigh Library? If so how?*

Madeleine: The Leigh Library is a fantastic asset with a wide range of books available. This little library serves a different purpose. If you find a book and you love it, you can keep it. The wonderful thing too, is that members of the public are able to donate a book in good condition and through this, feel part of the project, making this truly a community driven initiative.

Rag: *What is the future for the project, and/or how can people get involved?*

Madeleine: I'm very excited for the word to spread that we have this exciting Community Library, and that people of all ages can pick up a book they like the look of when walking past. But also, I hope that it might inspire someone else to make a Little Library where they live and share the love of reading.

Matakana Grooming Studio

Healthy Pets Naturally
Karen Person

Mb:027 437 7163
Ph:09 422 7486
www.pethaven.co.nz



matakanadoggrooming@xtra.co.nz

GREEN WASTE GARDEN BAGS

Drop off - Pick up
from \$30 each

COMPOST
from \$5 bags to trailer loads

Phone **FRICK**
021 123 0997

Trinity
CHIROPRACTIC



Chiropractic, Physiotherapy, Nutritionist
Massage & Health Coaching

For more information or to book a consultation:
trinitychiro.co.nz or
call 021980852

RayWhite



CAROL CHRISTY ■

TRUST | EXPERTISE | RESULTS

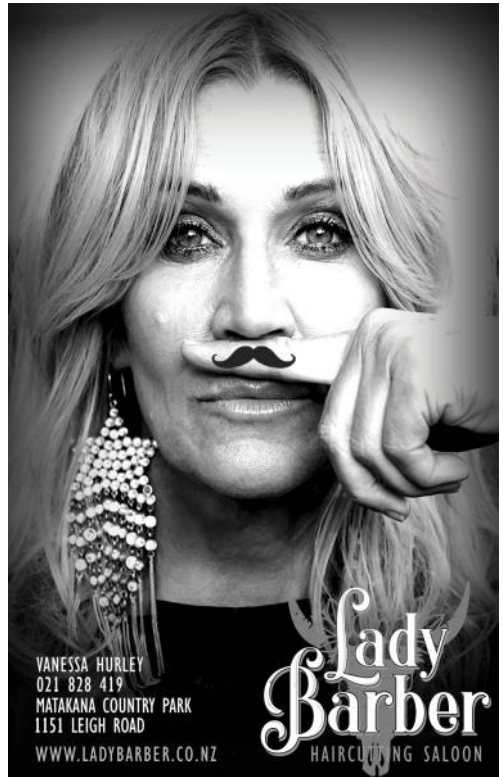
Carol has a tireless work ethic and an unwavering desire to deliver the best results possible for her clients.

Selling? Or simply curious about the local market? Call Carol today!

022-429-8975

carol.christy@raywhite.com

The Locals Warkworth REAA (licensed 2008)



VANESSA HURLEY
021 828 419
MATAKANA COUNTRY PARK
1151 LEIGH ROAD

WWW.LADYBARBER.CO.NZ

Lady
Barber
HAIRCUTTING SALOON

ST MICHAEL AND ALL ANGELS CHURCH LEIGH

Christmas CAROLS

'CAROLS IN THE OUTDOORS'
COME JOIN US FOR A LIVE MUSIC
CELEBRATION OF CHRISTMAS CAROLS

6:30PM-WEDNESDAY 20TH DECEMBER
SUPPER TO FOLLOW

OUTSIDE ON THE CHURCH LAWN, HAURAKI ROAD LEIGH
BYO OUTDOOR CHAIRS, RUGS AND VOICES!
(WET WEATHER- CAROLS WILL BE HELD INSIDE)

**ABSOLUTELY EVERYONE IS WELCOME
BECAUSE CHRISTMAS IS FOR EVERYONE!**

SQUEEGEE BOYS



- + Window Cleaning
- + Waterblasting & Driveway Care
- + Home & Building Washing
- + Roof Treatments
- + Gutter Cleaning

For a Free Quote visit our website!
squeegeeboys.co.nz



HELPFUL COMMUNITY CONTACTS

for emergencies dial 111 and ask for police, ambulance or fire service

Auckland Council 09 301 0101 toll free

Auckland Transport: public transport enquiries 0800 103 080

Healthline 0800 611 116 for 24-hour medical services

Graffiti Coordinator – Lionel Anderson 021 795 306 call or txt with location of graffiti

Lifeline Helpline Call 0800 543 354

Northlink Health enquiries for Home Help Ph 0800 425 999

North Shore Hospital Emergency Care 0800 809 342

Orca Hotline Call 0800 733 6722 to report orca sightings.

Police Non Emergency Dial 105 theft, vandalism, shoplifting, lost property, stolen cars, drugs etc. or 0800 105 105

Warkworth Police Station 09 425 8109 8am-4pm Mon - Fri

Shorecare Accident & Medical: 24/7, Sovereign House, Smales Farm

Takapuna National Poison Centre: 24 hrs advice 0800 764 766

Water emergencies dial 111 ask for Police.

THE LEIGH PENGUIN PROJECT

2023 has been a disappointing breeding year for our penguins. To date we have no evidence of new chicks. Those that hatched have either failed to fledge, or their nests were destroyed during storms last month. The recent loss of two adult birds (killed by dogs) sadly bring our penguin numbers down to a historic low. However, it's time to be merry and give thanks. We must stop to celebrate our wins and remember those who sacrifice their time to support this important environmental project. Local trappers have made a sterling contribution this year, catching stoats and rats near penguin nests. Thank you! This is not an easy task. Our key sponsor, *Penguin Random House Publishing*, has enabled our operation to develop, we couldn't do this without their personal and financial support. We are forever grateful to *Forest and Bird* for creating this initiative. Shout out to the Warkworth branch for all their help!



Two new committee members have joined our team of *citizen scientists*. Thanks Madeleine and Mary! They have helped fill the vacuum of four volunteers who moved from the area. With their decades of renown environmental work, Tony and Jenny Enderby will be sorely missed. As well as Ohad Peleg and Shani Madar who shifted to Wellington mid-year. Shani was our key technical guru, and Ohad was an inexhaustible nest finder, known for scaling rocks and exploring caves (even swimming to nests unreachable by foot!). Between them they left a big gap in our operation, and we miss them dearly. Finally, thanks for all the encouragement we receive from the Leigh community, and the majority of dog owners who keep their pets on leads when in Kororā nesting areas. We feel your empathy and support and look forward to meeting you on the penguin trails in 2024! Volunteers Wanted!

Neil Sutherland for the team (leighpenguins@gmail.com)

DOG OWNERS! KEEP YOUR DOG LEASHED ON COASTLINE TRAILS

COASTAL PAINTERS

Interior/Exterior

Leigh & Surrounding Areas

Call David 021 156 3461

David@coastalpainters.nz



**ALLEN
ELECTRICAL
LIMITED**

Electrical | Refrigeration | Heat Pumps
(Residential and Commercial)

Call Ray

021 025 22294

Email r.allen@xtra.co.nz

PO BOX 35, LEIGH 0947

WASTE FREE LEIGH

Waste Free Leigh had a successful market stall at the Matakana School Christmas Craft Fair. Purchases can also be made from the sewing room door on Mondays and Thursdays. We would like to thank all those who purchased our reusable products and are using our Christmas bags to wrap their gifts this year. You are making a difference in reducing waste and improving the health of our environment.

We will be open from time to time at The Leigh Hall sewing room. Come along to work on your project or get some help to achieve your sewing goals. The sewing room is a community asset and anyone can use the machines and equipment. For updates, please check the Love Leigh FaceBook page.

Please bring your clean, dry scrunch-able soft plastics to the Hall collection point. Aluminium cans go into the collection bag. For more information call Helen Parkes 021-484-432.

All the best for a pleasant summer and holiday season!

THE LEIGH HALL

The Leigh Hall is an ideal venue for family gatherings, group meetings, or indoor events (up to 120 people). We have excellent kitchen facilities, offering crockery, glasses, and cutlery. Get in touch today to book your event during the busy summer season.

The Hall committee is also interested in offering more recreation, arts, music, health, sports and fitness sessions. If you need a space to hold your lessons or events, please get in touch. New groups can enjoy a free trial of the space while building a following. Merry Christmas & Happy New Year!

BOOK THE HALL: email or phone **Lynn Mellsopp**
leighhallaukland@gmail.com ph. 027-286-8625

TANYA SVENDSEN
LICENSED SALESPERSON
RE/MAX REALTY GROUP

LOOKING FOR AN AGENT?

Finding the process of
selling your property
stressful?
Let me take care of it for
you....
Relax with Me & RE/MAX.

P: 021677744
E: tanya.svensden@remax.co.nz

Northern Properties Ltd
Licensed REA2008.
Each office independently owned &
operated



LEIGH VOLUNTEER FIRE BRIGADE



Last month was reasonably quiet with 6 incidents that included medical calls (4), a rubbish fire in Leigh, and a motor vehicle incident in Tomarata. A recent training session with Delta from Regional Training had multiple crews running a portable pump, deploying forestry packs, and operating a BlitzFire ground monitor that can deliver up to 2000 litres of water per minute!

Local legends **Frick Atkins** and **Gabe Ransom** (pictured—photo Leigh Fire Station) generously offered their time and hair to fundraise for a new Mule stretcher. This apparatus enables access to difficult terrain for more successful, safer patient rescues. The fundraiser is called '**Brave the Shave**' and will take place at the **Leigh Fire Station on 26 January 2024**. We have had several generous donations already and are grateful to have such a supportive community! **TO DONATE:** please visit givealittle.co.nz/cause/brave-the-shave-3

Our support vehicle has been modified with a new set of equipment lockers. The equipment on the appliance has changed significantly over the years, and additional space is needed for new rescue equipment. Thanks to the team at **Tiny Living** for helping us out!

We're honoured to host **Santa** again this year! Santa will ride in our firetruck, visiting all our good girls and boys on **Christmas Eve**. His first stop is **Whan-gateau Campground around 5:00pm**, followed by cruising the streets of **Leigh and Matheson's Bay**. Hope to see you all there!

The fine summer weather also brings dry weather so please keep an eye on your gardens and monitor any burn offs closely. If you're unsure, visit checkitsalright.nz. It's been a record year of callouts and we're grateful for your consistent support.

Lastly, a big **Merry Christmas** to our community. We are proud to serve this amazing area! Have a safe Christmas, and all the best for 2024. As always, stay safe!

Facebook: leighfire **Instagram:** leighfirenz

As always, stay safe Leigh! Hayley Nessia, Community Engagement

PEST FREE LEIGH

Pest Free Leigh began over three years ago (during the pandemic) and with 2024 around the corner, we'd like to reflect on our community driven achievements:

- attracted over 130 residents at our original launch event
- engaged a part time community co-ordinator to drive the project forward
- constructed 400 rat trap tunnel boxes
- distributed around 500 traps; including rat, stoat and possum traps
- organised Open Days with training sessions to familiarise trappers on how to use traps safely
- set up community awareness displays at local events, e.g. Mathesons Bay mid winter swim
- successfully applied for seven grants from local and central government
- collaborated with other local groups engaged in environmental restoration
- caught approximately 1000 pests annually (rats, stoats, weasels and possums)

Our outreach efforts have resulted in greater awareness of pest impacts on native bird and reptile populations. Free-range bird numbers have increased, with repeated sightings of kaka, korimako, and the occasional kiwi who has escaped from the Tamahanga reserve.

There has been increased sightings of stoats and possums in the Leigh area. How can you help? Pop into our next **Open Day at Leigh Hall (Cumberland Street end) on Saturday 20 January from 10am to 12pm**. Check that your DOC200 traps are set (they are available for free). Holiday bachers, please pay us a visit to discuss how trapping can occur during your absence. Our goal is a rat trap in every backyard! What's on the horizon? Next year we will focus on a rural project that was derailed due to Covid and look forward to connecting with our rural neighbours.

Happy Trapping! Merry Christmas & Happy New Year from our team!



SECTION SERVICES

TREE REMOVAL & PRUNING

**GENERAL GARDEN
MAINTENANCE**

insured | experienced | local

GET A QUOTE TODAY

Dom Guzzo
021-222-1223 dguzzo2000@yahoo.com



wm webster|malcolm|law

**Trusted
Approachable
Experienced**

15 Neville Street, Warkworth
09 425 8037

info@webstermalcolm.co.nz
www.webstermalcolm.co.nz

THE LEIGH COMMUNITY PATROL



Extreme weather events have had a substantial impact on our communities this year. We responded to breakdowns, lost tourists, fallen trees and slips, and reported these issues directly to Auckland Council. The Patrol also actively keeps an eye on residential properties to ensure community safety.

The Patrol attended a CPNZ Police Expo held in Kumeu last month led by the Police, Fire and Emergency Departments including St John Ambulance. Each provided valuable information on a range of issues such as home security and how to secure the scene of an accident. Police officers explained the use of specific equipment they employ such as breath test equipment, tasers and first aid kits. But when they asked Patrollers to act as offenders in a police dog chase demonstration, no one volunteered. However, we did take the opportunity to refresh our CPR skills with St John's.

We see value in our service and appreciate all the positive feedback received from the communities we serve. It is very rewarding work. As always, we welcome new members, young and old. If you wish to join the Patrol, contact Julie George our secretary, at leigh@cpnz.org.nz

Finally, we wish you all a Merry Christmas and a Happy New Year and thank you to those who have supported the Community Patrol in any way over the year!

LEIGH BOWLING CLUB

Calling all chess enthusiasts! Or board gamers young and old. Come to the Bowling Club on **Monday 18th Dec from 6pm to 8pm**. Coffee and tea provided. Bring a pack of biscuits or some snacks. Bring your chess board, or cards, and any other board games you have lurking in your cupboard. The lovely Lance will be on bar. Spread the word and see you there!

enquiries to Ian Bradnam, Secretary on 021 423144

LEIGH MOTORS

- FULL MECHANICAL REPAIRS
- WOF & SERVICING
- TRAILER HIRE
- FUEL 24 HOURS - Self Service
- NZC -Drop off -Pick up
- BATTERIES
- GAS BOTTLE SWAP
- TYRES
- BAIT & ICE

Come and chat to our friendly team for all your mechanical requirements

Ph: 09 422 6077

EMAIL—leighmotors2017@gmail.com

LEIGH COMMUNITY RESILIENCE GROUP

Tsunami sirens in Auckland have been decommissioned due to high maintenance, unreliability and vandalism. Our nearest one was in Whangateau. However, today smartphones can receive emergency alerts including Tsunami alerts.

NZ's Civil Defense advises the following for emergency alerts:

We expect half of New Zealand's phones will be able to receive alerts and expect this number to rise over time. As *Emergency Mobile Alerts* are about keeping you safe, you won't be able to opt out of receiving them. We do not target specific phones, instead we broadcast to a targeted area that is at risk. To get *Emergency Mobile Alerts*, you need a phone capable of receiving them. The phone also needs to have cell reception and up-to-date software. You don't have to download an app or subscribe to a service.

For more information go to the **Civil Defense website:**

<https://www.civildefence.govt.nz/get-ready/civil-defence-emergency-management-alerts-and-warning>

1. Check if your phone is on the list of capable phones.
2. Update your phone's operating system software.

January is often storm season. Keep an eye on the weather and if the wind picks up check and tie down umbrellas, gazebos, trampolines and anything that could go flying. If we experience a significant event, the Leigh Hall in Seatoun Road will open for information and support. Merry Christmas and wishing everyone a safe and Happy New Year! enquiries to **Lynn ph 027-286-8625**



After-school, weekend art classes and children's holiday arts programs.

Adult relaxation Painting Saturdays
1-3pm. Contact for details!

17E Totara Ave Leigh NZ 0985

Mobile 021-0891-6855

Email: foundationleighnz@gmail.com

Find us on FB **Foundation Gallery & Arts Hub** or
Instagram [FoundationGalleryNZ](#)

GET A QUOTE TODAY



MORRELL
CONSTRUCTION
REVOLUTIONS
ALTERATIONS
CONSULTANCY

John Morrell

021 663 496 | johnm674@hotmail.com
Grand View Road, Matheson Bay



**RODNEY
SEPTIC
TANK CLEANING**

PETER CAIRNS

Telephone: 09 422 7166

Moblle: 0274 946 370



· soups · bone broth · dressings ·

@abitdressy

www.abitdressy.co.nz

abitdressy

CHRISTMAS BASKETS

ORDER YOURS TODAY!
www.abitdressy.co.nz



CHAPPELL PRINTING DIGITAL PRINT CENTER

LAZER PRINTS | COPIES | BINDING
LARGE FORMAT | SCANNING
SCAN FROM PRINTS
LAMINATING
CANVAS PRINTS

Ray Chappell

0274-300-447 | chaprint@xtra.co.nz



**MATAKANA GLASS
TOP GLASS SERVICE**

**FAST FRIENDLY
WINDOW REPAIRS**

021 - 027 - 81204

www.matakanaglass.nz

Leigh General Services

Minor Building Works

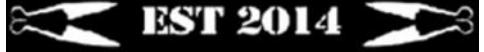
fences, decks
carports
water-blasting, painting

all work considered

30 yrs Building experience

Phone Bryn 0226369801

LEIGH BAR



OPEN TUES - SUN 4 PM ONWARDS

TUES | Burger & Beer
WED | Big Rib Night
THR | Chef's Special
FRID | Happy Hour
SAT-SUN | Sports Weekend

21 HAURAKI RD, LEIGH - (021) 0419-242



LEIGH EATS

CALL TO ORDER

(09) 422 6035

Monday 8:00AM - 8:00PM
Tuesday 8:00AM - 8:00PM
Wednesday 8:00AM - 8:00PM
Thursday 8:00AM - 8:00PM
Friday 8:00AM - 8:00PM
Saturday 8:00AM - 8:00PM
Sunday 8:00AM - 8:00PM

LEIGH COMMUNITY CLUB

run by volunteers for volunteers

The LCC Christmas Party was a fun social event for our members, many thanks to the Leigh Bowling Club for hosting. Also, many thanks to the great folks at Leigh Central for hosting our send off to Tony and Jenny Enderby. They have been stalwart volunteers in many initiatives throughout Leigh over decades. A special thanks to the Leigh Business Association for providing a keg of beer on the day. We wish all our club members, supporters and volunteers seasons greetings and a Happy New Year. Also a special mention to all the weekenders, we love the energy and fun you bring to the area. See you at the beach!

The LLC has two main community communication initiatives:

The Leigh Rag is a monthly local print/digital newspaper highlighting local news and businesses. Join the monthly digital copy mailing list: email leighragnz@gmail.com, join the Rag Facebook page: <https://www.facebook.com/leighragnz>. It is also available in print at The Leigh Store from the 20th of the month, and online at www.leighbythesea.co.nz.

The second is the **Leigh Community Group Facebook page**, www.facebook.com/leigh.com. Become a member and volunteer! Contact us today about how you can get involved.

Guy Parkes — Chair, Leigh Community Club leighcommunityclub@gmail.com

LEIGH RAG

LETTERS TO THE EDITOR

Do you have something to share? Start the conversation by submitting a short essay (less than 500 words) on a local matter that is well-researched, based in fact, useful for the community to know and solution focused. The essay should challenge, engage and/or delight readers, offering a different point of view that opens a window into an issue they were otherwise unaware. Include an explanation of your professional or personal background that supports your opinion or idea.

send with the subject line 'op-ed' to Lee at the leighragnz@gmail.com



**Wishing you all a
Merry Xmas and a hangover
free New Year!**

Turbo Tonic is the perfect
antidote to overindulgence and
available as a hot drink or by the
bottle at Leigh Eats

www.turbotonics.co.nz



Rochford Landscapes & Mini Diggers

Covering all aspects of Landscape Construction
"Specialist in Outdoor Construction
and tight access earthworks"

Concrete
Driveways
Retaining

Decking
Rock Walls
Pergolas

P: 021 939117

E: todd@rochfordlandscapes.co.nz

NOMINATE A LOCAL GOOD SORT!

The Leigh Community Church has run the *Good Sorts* column since 2013. Nominate someone by writing a few words about their good deed or thoughtfulness, including their name, address and phone number and drop it into the **Leigh General Store** in an envelope marked "*Good Sort*" or *email the Editor at LeighRagNZ@gmail.com*.

The person considered most deserving will receive home baking courtesy of Leigh Community Church

GOOD SORTS



Our GOOD SORT this month is the lovely **Amy** at **Leigh Bar** for helping Ruth get some new cookware via the New World promotion. She is thrilled with her new pans and the *Leigh Community Church* are delighted to reward your kindness and thoughtfulness.

Thanks **Amy**, enjoy your well-deserved home-baking!

**CHRISTMAS CAROLS @ the Leigh
Church is Wed 20 Dec 6.30pm**



Auckland Council approved
for septic servicing



HAUS

PLUMBING BY DESIGN

10% OFF

Labour rate for
SuperGold Card
holders



0800 888 380



info@hausplumbing.co.nz

LEIGH GENERAL STORE OPEN 7 DAYS

- ▶ Groceries
- ▶ Ice Cream & Drinks
- ▶ Fresh Fruit & Vegetables
- ▶ Magazines, Postcards & Films
- ▶ Free Range Eggs
- ▶ Hardware & Seeds
- ▶ Bait & Fishing Gear
- ▶ Wine

EFTPOS AVAILABLE
Phone 09 422 6034

INSURANCE



NAUTICAL

BOAT INSURANCE - better premiums
and a comprehensive cover

Ph 03 384 1694 • 0508 NAUTICAL

email: insurance@nautical.co.nz • www.nautical.co.nz

EARTHPRO

M A T A K A N A L T D

TRUCKS ▪ DIGGERS ▪ METAL

driveways ▪ house sites ▪ hard landscaping ▪ ponds ▪ section clearing
farm drainage & race maintenance ▪ commercial site preparation
drilling ▪ rock breaking ▪ retaining walls ▪ and all other earthworks

021 557 873 ▪ earthpro63@gmail.com

We cover Rodney ▪ 25 years experience ▪ Locally owned & operated ▪ Quality & Service Guaranteed



• WATER PUMPS
• WATER TANKS
• SPA & POOLS

SPLASH
WATER SPECIALISTS

• SALES & SERVICE
• WATER BLASTERS
• FILTRATION SYSTEMS

MM179

GRUNDFOS

AUTHORISED AGENT

We also offer the following:

- ◆ Water Filters
- ◆ Pool Valet Service
- ◆ Water Testing
- ◆ Water Treatment
- ◆ Spray Equipment
- ◆ Mobile & Workshop Services

31 Woodcocks Road, Warkworth ◆ Phone 09 425 9100
E: splashwater@xtra.co.nz

WHANGATEAU HALL

The summer music program at the Hall is ramping up nicely! We had two fantastic shows in November, from Richard Grainger and David Shanhun. This month's show features Paul McLaney, a New Zealand-based pop music composer, singer and guitarist originally from Stockton-on-Tees, England. In a career spanning over 20 years, McLaney has released a remarkable body of work under various guises from acoustic finger-style guitar and lush string arrangements to ambient and experimental electronica. He was a member of the collaborative music group *Fly My Pretties*, and produced the Te Reo song settings of Shakespeare for the Globe Theatre. He has a new album out and currently touring to showcase it. He will be performing on **Sunday the 17th of December at 7:30pm**. I hope you will all join us. **Tickets are \$20** and can be purchased at the door or by emailing jenine@torkington.com

We have two great shows scheduled in January, so mark your calendars for the **18th and 30th of January** and watch the **Whangateau Hall Facebook** page and website (www.whangateau.co.nz) for more information.

The Hall and reserve committee meet quarterly (visitors welcomed). For info, email: whangateauhallbookings@gmail.com. Go to our website for Hall hire rates and bookings. ACC is replacing the Hall roof and doing other repairs. Work begins **19 February 2024, and take 6 to 8 weeks**. During this time there will be no access to the hall. No word yet on when the toilet block replacement will begin. (There will be no annual Boxing Day Pot Luck this year, as Nat and Jenine will be away.) Have a safe & happy holiday!



please check website for opening hours | <https://www.reptilepark.co.nz/>
Adult \$22 - schoolchildren \$12 - preschooler - no charge - family pass \$60
enquiries@reptilepark.co.nz | 022 350 719

BUILDING PLANS & CONSENTS

Geoff Alexander (NDAT)
LBP # 123496
Ph. 09 422 6624
Mob. 0272 260 161
alex.g.h@xtra.co.nz



Design & Draughting Services

Resource Consents
Building Consents
Concept Design

New Builds
Alterations
Additions

LEIGH COMMUNITY CLUB

THE 100 CLUB RAFFLE IS ON!

NOVEMBER RESULTS:

1st Prize of \$300 tkt #11 David M.

2nd Prize of \$150 tkt #12 Dee J.

3rd Prize of \$50 ticket #14 Dee J.

Congratulations winners!

bali garden

WELLNESS
STAY
EVENTS

292 point wells road
matakana

see website for yoga schedule
www.baligarden.nz



foundationleighnz@gmail.com
0210 891 6855
17e Totara Ave, Leigh
Instagram: foundationgallerynz

COURIER PACKAGES

Leigh Motors is the official **Drop-off & Pick-up** point for **NZ Courier**
Leigh General Store for NZ POST

These are the only Courier Companies bringing packages to Leigh from Warkworth
Monday to Friday. Collect at Leigh General Store or Leigh Motors.

please pick up your parcels promptly



In the heart of Leigh Village

*five stylish self-contained motel units five boatshed cabins
all with a retro beach vibe—Boutique Motorhome/Caravan Park*

Function and Events Venue

www.leighcentral.co.nz

Phone: 09 422 6070 Mobile: 021 246 0757

FOR ALL EMERGENCIES

DIAL 111
Fire - Ambulance - Police

Don't waste valuable time trying to
find local numbers to call if you
need fire, ambulance, police or
assistance

**call 111 and ask for the
appropriate service**

Leigh Library wishes you a Merry Christmas and
Happy New Year



Michelle uses foundational, preventative and corrective
therapies to facilitate the ultimate restoration of
Health & Wellbeing

- Nutrition & Health
- Hair testing & analysis
- Emotional Rebalancing
- Cleansing & Support programmes
- Immunity/Health Check

these processes include testing the physical body and are excellent for people in all
states of wellbeing and at all ages to gain insight into their current state of wellness
practitioner only supplements available

Shadze of Lace

Sizes 10-22
locally designed/made clothing

Dressmaking/Alterations/
Repairs

15 Elizabeth St,
Warkworth

ph: 09-425-0515

www.shadze.co.nz

Leigh Church Services



11 AM FOLLOWED BY A CUPPA

ON THE 1ST, 2ND + 3RD
SUNDAYS
EVERY MONTH

ALL DENOMINATIONS AND
VISITORS WELCOME

MATHESON BAY NEWS

Seasons Greetings!

As thoughts turn towards Christmas and beaching at Matheson Bay, below is information to help make your holiday fun and safe.

Matheson Bay Community Breakfast - 29th December @ 09:30

Our annual Breakfast event, held in the reserve. Everyone is welcome, bring along your picnic brunch.

Matheson Bay Work Program

We are grateful for works recently completed by the ACC: new bollards and boulders, new picnic tables, new paths from the bridge, protective matting laid over exposed tree roots, removal of the damaged car park garden, a second car park garden was rebuilt, removed flaxes were replanted in the road reserve on Leigh Rd

Camping in Matheson Bay Reserve

Overnight camping is not permitted. This includes mobile homes and campers. Council signage is reduced due to policy changes. The unintended consequence is that drivers miss information on the Grand View Road entrance and there is no sign on the Matheson Bay Rd side. The ACC's *Freedom Camping Bylaws* team suggests calling their **3010101** hotline, or go to their online "[report a problem](#)" page including a photo of the registration of the non-compliant vehicle. The team is authorised to remove and fine visitors on the spot. Once there is a record of repetitive non-compliance, they will install additional signage. We will continue lobbying ACC for a better solution as we feel the onus is mainly on residents to police the reserve and escalates the risk of potential conflict.

Summer Gate Roster

A massive THANK YOU to our new Gate Duty seasonal volunteers. Your giving locals a break and providing an important security service. Shout out to **Mary Nissen** who has done a wonderful job coordinating the schedule.

Repositioned Pontoon

ACC have repositioned the pontoon closer to shore for safety reasons (pictured above). It should also help protect the platform from unmooring during storms. The platform is popular with all ages and swimming abilities, so please keep an eye out for anyone who appears to be in difficulty.

Rubbish & Recycling Collection

Rubbish for collection must be in orange **Rodney Bags** (sold in grocery/convenience stores and Mitre 10). Although some Auckland bags are similar in colour they won't be collected. **HOLIDAY COLLECTIONS: no collections Monday 25th December or Monday 1st January.** All collections during these two weeks will be **1 day later than usual.** Normal collections resume on Monday 8th January. **Recycling** will be collected fortnightly on Tuesday: **2nd January, 16th January, 30th January.**

The Matheson Bay Residents Association would like to wish you, your family, your Whanau, and loved ones a very Merry Christmas, Meri Kirihimete.



NorthlandWaste



100% NZ OWNED & OPERATED

www.northlandwaste.co.nz 0800 499 246



Usual Collection Day	New Collection Day
Monday 25th December (Christmas Day)	Tuesday 26th December (Boxing Day)
Tuesday 26th December (Boxing Day)	Wednesday 27th December
Wednesday 27th December	Thursday 28th December
Thursday 28th December	Friday 29th December
Friday 29th December	Saturday 30th December

Usual Collection Day	New Collection Day
Monday 1st January (New Years Day)	Tuesday 2nd January (Day after New Years Day)
Tuesday 2nd January (Day after New Years Day)	Wednesday 3rd January
Wednesday 3rd January	Thursday 4th January
Thursday 4th January	Friday 5th January
Friday 5th January	Saturday 6th January



HELP MAKE OUR COMMUNITY
PREDATOR FREE

GET A FREE TRAP TODAY
pestfreeleigh@gmail.com

keep it local

FOLLOW US ON FACEBOOK FOR NEWS, EVENTS AND THE GOS

WWW.FACEBOOK.COM/LEIGHRAGNZ



Have an upcoming event?

Get the word out! Put it in
THE RAG!

email us today

leighragnz@gmail.com

COMMUNITY EVENTS CALENDAR

DATE	EVENT	TIME	\$\$	PLACE
18 Dec	Chess & Board Games	6-8 PM		Bowling Club
20 Dec	LAST DAY OF SCHOOL TERM			Leigh School
20 Dec	Christmas Carols	6:30 PM		Leigh Church
29 Dec	Matheson Bay Xmas Breakfast	9:30 AM		Matheson Bay
31 Dec	Santa Visit on the fire truck	5 PM		starts Whangateau
20 Jan	Open Day—Pest Free Leigh	10-12 PM		Leigh Hall
26 Jan	BRAVE THE SHAVE hrnessia@gmail.com	contact for details		Leigh Fire Station
WED Night	Business House Competition			Bowling Club
SUNDAYS	Club Days	2:00 PM		Tennis Club
MONDAYS	Yoga Meditation	6-7:15pm	\$0-10	Snells Beach C.Ctr.

REGULAR WEEKLY EVENTS

what	Day	time	contact
Waste Free Leigh Sewing	Monday (entrance Cumberland St)	9:30 – 11:30	Drop-in non sewers welcome
Yoga	Tuesday	9:30 – 11:30	Marion 021-111-9104
Nia / Pulse	Wednesday	8:00 – 9:00	Amara 0221-696-481
Advanced Contemporary Dance	Thursday	8:30 – 9:30	
Waste Free Leigh Sewing	Thursday (entrance Cumberland St)	9:30 – 11:30	Drop-in non sewers welcome
Knitting at Leigh Library	Thursday	2:00 – 4:00	All welcome
Nia / Pulse	Friday	9:00 – 10:00	Amara 0221-696-481

LEIGH RAG

LOCAL ADVERT = LOCAL BUSINESS

starting at \$100 for 11 issues

email for more info: leighragnz@gmail.com

follow us on FaceBook

www.facebook.com/leighragnz

Community Directory

- Forest & Bird Coastal Restoration Group** - 022-582-2713 Neil Sutherland
- Leigh Bowling Club** - 021-423-144 Ian Bradnam (secretary)
- Leigh Business Community**— leighbytheseanz@gmail.com www.leighbythesea.co.nz
- Leigh Cards 500** - 1:00 - 3.30pm Tuesday, Leigh Bowling Club, all welcome, \$3.00
- Leigh Cemetery Trust** - 027-277-7594 Diti Hill-Denee
- Leigh Church** - 425-8054 (call to book the Church Hall)
- Leigh Community Club** - 021-352-588 leighcommunityclub@gmail.com Guy Parkes (pres)
- Leigh Community Patrol** 021-827-855 leigh@cpnz.org.nz Julie George (secretary)
- Leigh Community Preschool** - www.leighpreschool.co.nz 422-6516 Lucinda van Oosterom
- Leigh Hall** - 027-286-8625 leighhallauckland@gmail.com Lynn Mellsopp
- Leigh Harbour Valley Society** - 422-6880 www.leighharbourvalleysociety.org.nz
- Leigh Library** – 021-024-13144 / 422-6409 Jenny Stewart (librarian)
- Leigh Penguin Project** - 0275-658-817 leighpenguins@gmail.com
- Leigh School** - 422-6031 www.leigh.school.nz Georgia Brebner
- Leigh Tennis Club** – leightennisinc@gmail.com Marie Dominique Lennan (pres)
- Leigh Walking Group** - paddis@xtra.co.nz Valda Paddison (meet Monday at 9.30am)
- Matheson Bay Neighbourhood Assn** - mathesonbayassn@gmail.com Yvonne Keesling
- Pakiri Community Landcare Group** - 021-688-997 (Frankie) or nick@nickmolloy.co.nz
- Pakiri Tennis Club** - 021-242-7459 Linda Taylor (Secretary)
- Pest Free Leigh** - pestfreeleigh@gmail.com FB: www.facebook.com/groups/pestfreeleigh
- Plunket** 027-290-1915 Adele (meet 1st Monday of month Leigh Church Hall Contact)
- Rodney Rams Rugby League Club** - 021-0205-8098 Daphne Were rodneyrans@outlook.com
- Tawharanui Open Sanctuary Society** - 585-1315 www.tossi.org.nz Karyn H. secretary@tossi.org.nz
- Waste Free Leigh** 021-484-432 helenp708@gmail.com Helen Parkes
- Whangateau Acoustic Music & Social Club** - www.whangateau.co.nz
- Whangateau Neighbourhood Support** – sharyncarew@vodafone.co.nz Sharyn Carew
- Whangateau Residents & Ratepayers Assn | Whangateau Hall** - 422-6209 Audrey Sharp or Hugh McKergow 422-6219, *book the Hall*: 021-428-568 Jenine Abarbanel whangateauhallbookings@gmail.com

JUSTICES OF THE PEACE & CELEBRANTS

JP - Fay Bradnam 422-6038

JP - Jon Everest 021 354 708

JP - John Marsden 489-0193, 021-509-463

FACEBOOK

Leigh Community Club - www.facebook.com/leighcomm/

Leigh Community Patrol - www.facebook.com/leighcommunitypatrol

Love Leigh - www.facebook.com/groups/loveleigh/

Leigh by the Sea - www.facebook.com/leighbythesea

Leigh Historical Photographs NZ - www.facebook.com/groups/739949979454558

Leigh Rag - www.facebook.com/leighragnz

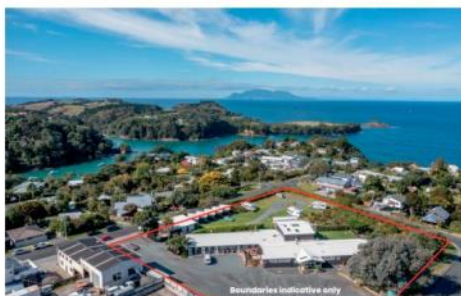
IF YOUR CLUB OR GROUP DOES NOT APPEAR, PLEASE EMAIL US: LEIGHRAGNZ@GMAIL.COM

**Marie-Dominique**021 490 039 | marie.lennan@ljhooker.co.nz**22 Barrier View Road**

Breathe, hear, and see the ocean from this 809 m2 section with plans.

For Sale By Negotiation

View ljhooker.co.nz/F0QHAY

**22-28 Cumberland St**

Leigh Central - Tourism venue with accommodation on 8094 m2.

For Sale By Negotiation

View ljhooker.co.nz/EYUHAY

**55 M Greenwood Road**

Bareland with bush by the Coast
4.96 Ha.

For Sale By Negotiation

View ljhooker.co.nz/ETVHAY

**6 Sea View Road**

One level 3 bedroom home with sea views & private backyard on 1093 m2.

For Sale by Negotiation

View ljhooker.co.nz/EZEHAY