

# LEIGH RAG

## December 2020

Leigh Rag is supported by the Leigh Community and compiled and edited by Helen Parkes  
22 Harbour View Rd Ph 021484432  
Please submit contributions **before the 15th** of each month.

Email to [leighragnz@gmail.com](mailto:leighragnz@gmail.com)

Please Note: The Editor of the RAG does not take any responsibility for the contents of items supplied.

**Newsletter for Leigh, Matheson Bay, Whangateau, Pakiri**

**Sponsored by Leigh Community Club,  
Leigh Fisheries and the Leigh General Store**

**View the Leigh Rag online**

**[www.leighbythesea.co.nz/news-events](http://www.leighbythesea.co.nz/news-events)**

## GOODBYE 2020 HELLO 2021



Thanks to all who read the Leigh Rag, those that contribute and all our advertisers. Special thanks to the proof reader. Thanks also to Ray from Chappell Print for always getting the printing done on time.

Merry Christmas and best wishes for the New Year  
Helen Parkes. Ed

# Escape to Leigh Leigh Business Community

The Leigh Business Community is a varied group that encourages and supports local business owners. As part of the promotion of businesses in the area we like to promote a local business each month and this month we are pleased to introduce you to Leigh Electrical.

Leigh Electrical is a local, family owned and operated business. We currently have two fully qualified, registered tradesmen (Joe & Levi) and are happy to recently welcome our new apprentice, Brody, to the team.

Together we have a wide range of knowledge, skills and experience in the electrical industry.

We pride ourselves on quality workmanship and efficient service to residential & commercial customers in the area (anywhere from Mangawhai to Puhoi). New builds, renovations or maintenance, we've got you covered. We offer an extensive list of residential and commercial services.

Give Joe a call on 021 220 3717 to discuss your requirements or email [info@leighelectrical.co.nz](mailto:info@leighelectrical.co.nz) and we'll be happy to help.

Email the Leigh Business Community [www.leighbythesea.co.nz](http://www.leighbythesea.co.nz) to find out more.

For any information about the Leigh Business Community, please contact Jan Scott 094226681 or email [LeighbytheseaNZ@gmail.com](mailto:LeighbytheseaNZ@gmail.com)



## **LEIGH MOTORS 2017 LIMITED**

- FULL MECHANICAL REPAIRS
- WOF & SERVICING
- TRAILER HIRE
- FUEL 24 HOURS - Self Service
- NZC -Drop off -Pick up
- BATTERIES
- GAS BOTTLE SWAP
- TYRES
- BAIT & ICE

***Come and chat to our friendly team for all your mechanical requirements***

**Ph: 09 422 6077**

**EMAIL—[leighmotors2017@gmail.com](mailto:leighmotors2017@gmail.com)**

## RESULTS OF THE LEIGH COMMUNITY CLUB

### 100 RAFFLE

1st Prize \$300 #62

2nd Prize \$150 #33

3rd Prize \$50 #20

Congratulations to D Cooper, S Belsten and H & I Johnson-Lee  
Next draw due on Thursday Dec 24th @ 5pm at the Leigh Bowling Club.  
January Draw will be on 29th @ 5pm at the Leigh Bowling Club

## LEIGH SUNFLOWER COMPETITION

Hopefully your plants are  
thriving in your gardens

**PRIZEGIVING TO BE HELD**  
at  
**Leigh School**  
1pm Sunday  
31 January 2021



Your Local  
Painter/Decorator  
with over 25 years experience  
serving all surrounding areas.

## Leigh Decorators

- Painting
- Paperhanging
- Roofs
- Airless Spraying
- Stopping
- Repaints
- New Homes

For your Free Quote and/or  
Consultation,

Phone Gary

Home: 09-422-6695

Mobile: 021-024-44941

Email:

[leighdecorators@outlook.com](mailto:leighdecorators@outlook.com)

## DIAL A DIGGER

### earthworks

- Site Works & Foundations • Drainage & Driveways
- Drilling < 600 mm • Section Clearing • 8 Tonne Tipper Available

Brian George experienced & efficient operator

021 749 594 Brian | 09 422 6267 Office  
[info@dialadigger.co.nz](mailto:info@dialadigger.co.nz)



# Leigh Hall

The Hall committee want to thank you all for your patience and understanding this year. Finally, after necessary reviews and in spite of Council cuts to Rodney Board funding, our much needed refurbishment has been completed. A huge thank you to all those who supported us in asking the Board to complete the project without further delay. So, new lighting and lots of new power points, carpark lighting, replaced acoustic ceiling tiles, new fire exit doors, an internal paint job, new kitchen lino and 2 new ovens are among the many improvements made. A big thank you to the project manager who is a Leigh local - you worked your magic to maximise the benefit to the hall and it is very much appreciated. New curtains for all windows upstairs have been purchased from our fundraising account. - we will be looking for willing volunteers to help reinstall curtain tracks and hang the curtains some time in January. There are a few jobs to be done and we will have a couple of working bees to get the hall ready in time for regular sessions which start back mid January / early February.

The Leigh School end of year prize-giving and The Foundation kids disco both went off really well and provided further opportunities for people to see the freshly painted hall. We are now much better equipped for these big events with power points in the main hall to connect sound systems into. The committee's market day / open day was a great success too; we hope many of you crossed some items off your Christmas shopping list or bought yourself a well earned treat. Funds of \$170 towards future minor assets were banked as a result. Thank you to everyone for your support. Shall we do it again next year?

So, the hall is now available for one-off and regular bookings. We believe we have very reasonable rates, so if you are thinking of starting up a class, activity, social gathering etc, run it past one of the committee,

Phone 027 286 8625, or email [Leighhallauckland@gmail.com](mailto:Leighhallauckland@gmail.com). We will see how we can help make it happen.

So now it remains to wish each and every person reading this a very Merry Christmas, a relaxing and safe holiday, and certainly a very Happy New Year - 2021 is going to be great. *Lynn Mellsopp - on behalf of your hall committee.*

## **Lynn Millett RC Animal Homeopath**

*Natural, Effective, Safe and Affordable*

As an Animal Homeopath I specialise in working with all animals who suffer from Skin Conditions, Allergies, Arthritis, Incontinence, Diabetes and Behaviour problems.

Phone: **Lynn 021 579 398** or email  
[lynn.millett2017@gmail.com](mailto:lynn.millett2017@gmail.com)

Home visits are available, and clinic room is  
located in Warkworth at  
Warkworth Natural Therapies,  
By appointment only. [www.wnt.co.nz](http://www.wnt.co.nz)

## **COASTAL PAINTERS**

**Interior/Exterior**

*Leigh & Surrounding Areas*

**Call David 021 156 3461**

**[David@coastalpainters.nz](mailto:David@coastalpainters.nz)**

## **Leigh Community Club**

"It's the week before Christmas and my true love said to me"

**It's deadline time for the Leigh Rag, why haven't you written the monthly report!**

So here it is; Merry Xmas everyone,

I am sure you are like us and can't wait for the start of 2021 but first we must get through Xmas and New Year.

Our tent gets put up in our back yard ready for the whanau invasion, barbecue is cleaned and I am ready to join my wife for daily swims at Matheson Bay.

For those of you travelling out of the area for your family get togethers we wish you safe travels and Covid free holidays.

When you get to the New Year and start to think of what 2021 has instore please consider staying connected with our fabulous community by volunteering with one of the many community activities in the local area.

Not sure what's available? Check out the back page of the local paper the Leigh Rag published monthly. Available at Leigh Store and online.

You can volunteer at Leigh Library, learn to sew at Waste Free Sewing Group, support The Leigh Penguin Project, and keep rodents out of your section with Pest Free Leigh. Keep fit by playing tennis at Leigh Tennis Club and walk weekly with the Leigh Walking Group.

Is music your thing? Join Whangateau Acoustic Music Social Club.

Love weeding? Become a volunteer with Forest & Bird Coast Care Group and keep our coastline free of invasive weeds.

Finally we would like to thank all our Leigh Community Club Members for making volunteering part of your giving back to Leigh in this lockdown year of 2020.

See you all on the other side in 2021

Guy & Helen Parkes



Open Daily 10am – 5pm

Email enquiries@reptilepark.co.nz

ph 09 422 6021





# Leigh School

Congratulations to Fay Bradnam on her retirement! Fay has been a vital member of Leigh School for many years and will be missed by all. We wish her all the best.

Term 1 starts Feb 9th 2021

We look forward to seeing you all at the

**Leigh School Summer Festival**

**Saturday 6 February.** Have a wonderful and well deserved summer holiday

Mere Kirihimete

*Kate*



GOOD SORTS this month are **Terry & Joyce McCormick** who quietly and unobtrusively look after our Leigh Cemetery. Joyce is Secretary for the Leigh Cemetery Trust and off his own back Terry has his own working-bees, keeping the trees trimmed back and the weeds at bay so the grounds are always tidy and ready for visitors.

Thanks for the great job you do Team McCormick.

We hope you enjoy the home-baking from the *Leigh Community Church.*





Trinity Chiropractic, 50 Golf Road,  
Warkworth, 0985. Ph. 09 422 7917.

## LEIGH GENERAL STORE OPEN 7 DAYS

- Groceries
- Ice Cream & Drinks
- Fresh Fruit & Vegetables
- Magazines, Postcards & Films
- Free Range Eggs
- Hardware & Seeds
- Bait & Fishing Gear
- Wine

**EFTPOS AVAILABLE**  
**Phone 09 422 6034**

## Waste Free Leigh

The Leigh Waste Minimisation  
sewing group meets

**Thursdays and Mondays**  
**9.30 am to 11.30 am.**

Come along and enjoy some  
company with your own sewing  
knitting or craft project.

We encourage home crafts and help  
with skills to re-use, repurpose and  
create items.

**Meeting at 96 Leigh Hall**

Proper Hand Washing is still an  
important and effective way to  
eliminate the spread of the Covid 19 virus.  
Please keep it up and stay safe.



## MOWING

Sections, Large  
Lawns &  
Lifestyle Blocks



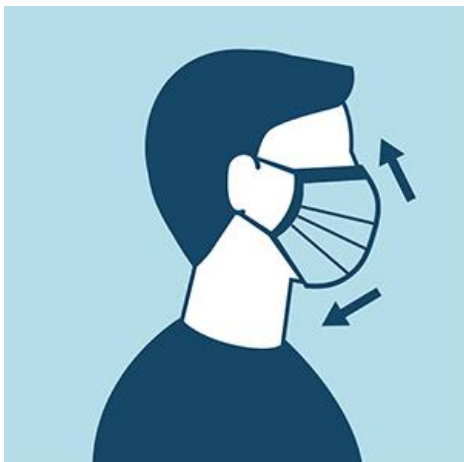
## TRACTOR WORK

Post Thumping Spraying etc

**CRANE TRUCK** Rubbish removal

General Lifting up to 2 tonne

**Ph FRICK 0211230997 or**  
**09 4226 223**



## Local News



### Richard Scott from the Leigh Bar

This Christmas day I'm doing something different. We are putting on a lunch at the Leigh Bar (21 Hauraki road, Leigh) at 2pm for anyone who's Christmas plans have been disturbed. We will have

ham, turkey, pav, all the kiwi Christmas stuff! Its a BYO as the bar has to be closed. So if you don't want to cook, or just want to be with the community this Christmas please come. Thanks go to the Viking Trust for sponsoring this community event We would love numbers so please email [theleighbar@gmail.com](mailto:theleighbar@gmail.com) or call/text the bar on 021 041 9242 or me on 021 153 8962.



We invite you all come along to the Leigh Church for some Carol Singing on Monday evening 21st December . 6.30 pm

### Regular events at the Leigh Hall

- ♦ Sewing with Waste Free Leigh (downstairs) Resumes February
- ♦ Dancing with Spinning Sun / Ann Dewey Resumes Mid January
- ♦ Yoga with Marion Chateau Resumes February
- ♦ Nia Class with Amara Labb resumes in the new year.



**RODNEY  
SEPTIC  
TANK CLEANING**

**PETER CAIRNS**

**Telephone: 09 422 7166**

**Mobile: 0274 946 370**

### The Knitting Truck

yarn, needles, patterns, ready made knitwear and classes  
We primarily stock N.Z. Yarn and locally made products

**Open 6 days Weds – Mon  
10-4**

**Closed Tuesdays**

Based at Charlies Gelato  
17 Sharp Rd Matakana

**021-194-5631**





Graphic Design | Web | Custom Art

Based in Leigh - Contact for a quote:

john@alchemydesign.co.nz | +64 21 207 2793

## Leigh Church Services

All denominations and visitors are most welcome to join with us each

**Sunday at 11 am**

There is a prayer meeting every  
**Sunday at 10.30 am.**

**Children's Ministry enquiries**

**Ph: Janette 422 6204**



*All welcome.*

# EARTHPRO

## M A T A K A N A L T D

**TRUCKS ■ DIGGERS ■ METAL**

driveways ■ house sites ■ hard landscaping ■ ponds ■ section clearing  
farm drainage & race maintenance ■ commercial site preparation  
drilling ■ rock breaking ■ retaining walls ■ and all other earthworks

**021 557 873 ■ earthpro63@gmail.com**

We cover Rodney ■ 25 years experience ■ Locally owned & operated ■ Quality & Service Guaranteed

TANYA SVENDSEN  
LICENSED SALESPERSON  
RE/MAX REALTY GROUP

## LOOKING FOR AN AGENT?

Finding the process of  
selling your property  
stressful?

Let me take care of it for  
you....

Relax with Me & RE/MAX.

P: 021677744  
E: tanya.svensen@remax.co.nz

Northern Properties Ltd  
Licensed REA2008.  
Each office independently owned &  
operated



## What's Going on around here?

If you have an event coming up, send an email to [leighragnz@gmail.com](mailto:leighragnz@gmail.com) and it can be included in this monthly notification

<i>What Date</i>	<i>What is it</i>	<i>When</i>	<i>How much</i>	<i>Where</i>
Dec.21 Monday	Carol Singing	6.30.pm		Leigh Community Church
Dec 25 Friday	Xmas Lunch BYO drinks	2pm	No charge	Leigh Bar
Dec 26 to 31	Waste Free leigh Pop Up Shop	10 –3 pm daily		Foundation Gallery Totara Ave
Jan 4 Monday	New Years Day Holiday			
Feb 6 Saturday	Leigh School Fiesta	Watch for posters		Leigh School Field
Feb 8 Monday	Waitangi Day Holiday			
Feb 9 Tuesday	Term 1 starts	Usual time		Leigh School
Feb 23 Tuesday	Fibre connection information drop in sessions hosted by Chorus	11.30-1pm	No charge	Leigh Hall



## **Rochford Landscapes & Mini Diggers** **Leigh Local** **Covering all aspects of Landscape Construction**

As well as our successful landscape construction and mini digger services, we are now offering a Greenscape division offering:

- Hedge and tree trimming
- Planting services
- Lawn installation
- Section clearing and waste removal
- Garden maintenance and installation
- Revegetation and wetland installation
- Lifestyle block maintenance

**021 939 117**  
**accounts@rochfordlandscapes.co.nz**

## Forest and Bird COAST CARE GROUP Leigh.

November has been a stunning month for progress. With more than forty person hours of community work we've had a major attack on the jasmine which was overtaking the bush at the end of Kowhai Tce. Take a wander down and see! With support from Leigh Community Club we're hoping to get Council to clean out the household and garden rubbish dumped there over the decades, after which Council has agreed to help us do in-fill planting there next winter. Win! Partnerships! Win!

This project does highlight the problem of residents using public land as a dumping ground. Whether on bush remainders or coastal reserve, whether household rubbish or garden rubbish, please remember all public land belongs to neighbours, the street, and everyone else in our stunning little seaside village. It is here for us all to enjoy.

'Tis time to thank: Leigh Community Club for their ongoing support; Auckland Council who in many ways enable our project; Warkworth Area Forest and Bird who give active backing and encouragement; and all you wonderful Leigh residents who put in the mahi that ensures our project delivers.

It looks like some of the pohutakawa has done an 'early' on us this year, but enjoy everything else that makes Leigh such a wonderful natural place to live. Take some time this festive season just to sit and look and soak it up. This is a place where nature never stops giving.

*Neil Sutherland.*



### **The Insurance Lady**

**Sue Cole** IBANZ, PIB

Insurance Broker, Financial Adviser 28045

**027 422 7668 • A/H 09 422 7668**

[sue@dhabrokers.co.nz](mailto:sue@dhabrokers.co.nz)

30 Years Insurance Industry

Experienced in Domestic & Commercial, Fire and General Insurance.

Please email or phone for a quote.



**\*Member Broker of PSC Connect Steadfast Group**



# LEIGH VOLUNTEER LIBRARY

Situated in The Cottage opp General Store

**OPEN: Tuesday 2pm-6pm**

**Wednesday 2pm-4pm**

**Thursday 11am-1pm Saturday 9am-1pm**

Kia ora Leigh whanau

Christmas and summer holidays are just around the corner - hasn't this bizarre year just flown by? By the time this publication comes out the library will have had its annual community lunch and the lucky winners of the raffle prizes will have been contacted.

The Christmas raffle has been fundraising for the library's 150<sup>th</sup> anniversary celebration which is 2021. What an amazing achievement this is for our village and once again it shows how important passionate volunteers are in our community.

Leigh Library will be open its usual days and hours except for Boxing Day when we will be closed. We have excellent books for reading as you lay somewhere quiet and if the weather turns nasty, then there's no better way to pass some hours than burying your nose in your book of choice.

We also have current NZ Geographic magazines, a small selection of puzzles, lots of non-fiction titles, excellent books for children and teenagers, and some Asterix, TinTin and Lucky Luke graphic novels. We hope you all have a safe and relaxing Christmas break and on behalf of everyone at the lovely Leigh Library – Nga mihi o te Kirihimete me te Tau Hou hari / Greetings for Christmas and the New Year. *Tracey*

**FOR ALL EMERGENCIES**

**DIAL 111**

**Fire - Ambulance - Police**

Don't waste valuable time trying to find local numbers to call if you need fire, ambulance, police or assistance.

**Call 111 and ask for the appropriate service.**



**MATAKANA GLASS**

**TOP GLASS SERVICE**

**FAST FRIENDLY  
WINDOW REPAIRS**

**021 - 027 - 81204**

**[www.matakanaglass.nz](http://www.matakanaglass.nz)**

## Public Notice

Peter Wyatt and his entire family extend their sincere and heartfelt thanks to all of James's friends, colleagues and also to the entire local community for their unfailing support, messages, cards, flowers, food and love on the passing of James.

## LEIGH TENNIS CLUB

TENNIS FOR ALL!

**Thursdays 9.30-11am**  
**Thursdays from 5pm**  
**Saturdays from 3pm**

Leigh Tennis Club,  
Albert St, Leigh

If you wish to play at the above times, can you contact Liz Jones  
Ph 021 0721 101.



**In the heart of Leigh Village**  
*Five stylish self-contained motel units  
and five boatshed cabins  
all with a retro beach vibe*  
*Boutique Motorhome/Caravan Park*  
*Function and Events Venue*  
[www.leighcentral.co.nz](http://www.leighcentral.co.nz)  
**Phone:** 09 422 6070  
**Mobile:** 021 246 0757



### **Snorkel Hire Schools Information**

2 Seatoun Avenue  
RD5 Leigh  
021 92 6212

[www.theoctopushideaway.nz](http://www.theoctopushideaway.nz)

# LEIGH RAG

### **ADVERTISEMENT RATES**

**Deadline 10th of month**

**Standard size adverts**  
**\$20 each or \$80 for 11 issues**  
**(Larger ads priced as required)**

Email [leighragnz@gmail.com](mailto:leighragnz@gmail.com)

Phone Helen Parkes Editor  
021484432

### **BUILDING PLANS & CONSENTS**

Geoff Alexander (NDAT)  
LBP # 123496  
Ph. 09 422 6624  
Mob. 0272 260 161  
[alex.g.h@xtra.co.nz](mailto:alex.g.h@xtra.co.nz)



### **Design & Draughting Services**

Resource Consents  
Building Consents  
Concept Design

New Builds  
Alterations  
Additions

# MATHESON BAY NEWS

Well here's to the last newsletter for what has been an interesting and alarming year. Most of us in Godzone have a lot to be thankful for and I'm sure everyone is looking forward to Christmas and time with family (if not overseas) and friends.

So much has been achieved in the bay this year with new planting in the beach reserve and along Leigh Rd., a start on tidying up the reserve on the way down to the beach on Grandview, Kauri protection stations installed, trapping along the Kahuroa Stream Track and the launch of 'Pest Free Leigh'. And finally, we have No Parking signs in the turn around on the south side along with angle parking. Hopefully people will be able to read the signs because they still seem to be having trouble with the pictograms indicating no tents.

The water is up to 17.5 deg. and the pontoon is hopefully on its way. After breaking moorings last summer, the contractors have had trouble finding the hunk of concrete and chain that holds it in place. The beach is looking lovely with many pohutakawa in bloom and crystal-clear water.

For those that are coming up for the holidays, can you leave your cats at home please, or at least put bells on them as there are many young birds around who are leaving their nests. Last summer a local cat caught a wood pigeon, injuring it to such an extent it had to be put down.

Just a reminder that rubbish bags are best kept off the ground so that pukakoes and roaming dogs don't get into them. Collections are on Mondays, or the day after for public holidays. Have a lovely Christmas and a Covid-free New Year.

***Louise van Campfort***

## LEIGH BAR

EST 2014

## LEIGH BAR

EST 2014



### QUIZ NIGHTS

**\$5 per person**

**6.30pm**

**First Monday of month**

**- Starts February -**

**Book tables at Leigh Bar**

Numbers are limited

**Open 7 days**

**9.30 am till late**

**Saturday and Sunday special**  
bottomless brunches and \$5 mimosas  
from 9.30 to 11.30am

**21 Hauraki Road, Leigh**  
**or call Richard on 021 0419 242**



## **Waste Free Leigh Pop Up Shop**

Foundation Gallery Totara Ave Leigh

Dec 26 to 31 - 10 am to 3 pm

Gift Bags, shoppers, Beach wraps, Aprons and more.

Introduction to Sewing Introduction to Weaving

**Half day courses \$25 per person  
each lesson**



**Phone Helen 021484432 to book**

**Learn to sew** - make a simple bag or apron or get help with your own project.

Max 3 people per session .

Morning 28th 10-12 or Afternoon 29th 1-3pm  
spaces still available

**An introduction to weaving** for anyone who enjoys making things, being creative or just wants to do something different.

Rather than flax, we'll be using strips of soft vinyl to make a container. Although not waterproof, the resulting pot would make a good flowerpot cover, keep bottles together, a dish to put bread rolls, so many uses! Sessions available up to 5 participants as there is limited space.

Dec 27, class fully booked

Dec 30 .10-1pm spaces still available.

Sorry, no children under 14

**Simple clothing repairs, hems, seams, buttons**

**All funds go to the Leigh Community Club  
Preschool Playground 2021 project**



### **GARDEN BAGS**

(hold approx. 1 cu.m)

FOR ALL **GREEN** WASTE

*DROP OFF – PICK UP*

From \$20 each

Phone **FRICK**

**021 123 0997  
or 09 422 6223**

### **Keep Leigh Waste Free**

Remember to:  
**Refuse, Reduce, Reuse,  
Repurpose,  
Rot, Recycle and  
Repair.**



We have been busy with our penguin project and recently had a get together for those involved as supporters or volunteers. The regular checking of our coastal traplines by so many local volunteers must be making a big difference and we thank them for all their work and time given to our project. Very few predators are now getting caught in traps and virtually none on film – a sign that our predator

controls are working well.

Other volunteers regularly check penguin nesting boxes for signs of activity. Two boxes have been inhabited by penguins this season and have been videoed. It is interesting to watch as they take nesting materials into their adopted box, then later went back and forth feeding their chicks. Very exciting when videos showed the grown up chicks all ready to fledge.

Little blue penguins at Ti Point have not adopted any of our boxes yet, but there are lots of natural places for them to nest amongst the large boulders. Three nests were filmed and most of the chicks have now fledged – left their homes - and are most likely swimming happily at sea as they feed.

At one site after the chicks fledged, the adults were seen taking nesting material into their site again and it is possible they nested again.

Over the next few months, adult penguins will come ashore to moult.

This is when they are most vulnerable. They cannot go to sea and feed until their new feathers are complete and often this means a couple of weeks

on land. During this time they may look quite scruffy and if you spot a penguin on land, do not put it back into the sea. Once their moulting is complete they can head back out to sea to fatten up before beginning their cycle of producing young all over again.

Any penguin sightings please email

[leighpenguins@gmail.com](mailto:leighpenguins@gmail.com)





## PEST FREE LEIGH

[pestfreeleigh@gmail.com](mailto:pestfreeleigh@gmail.com)

Pest Free Leigh has distributed over 150 traps to residents in the Leigh, Matheson Bay, Pakiri, Ti Point areas. The trapbuilders – Ross Garrick, Paul Smith, Tony Enderby and Kevin Lawton – have now constructed another 180 odd traps ready for distribution

for those who have yet to get one.

Our initial plan was to have 150 traps out in the Leigh area in our first year. It is only two months since our official launch and we have exceeded that number already. A mighty effort! It is great that so many people are committed to making Leigh rat-free.

If you have not yet got your rat trap, can you email your name, address and email details to [pestfreeleigh@gmail.com](mailto:pestfreeleigh@gmail.com). One of the Pest Free Leigh team will be in touch with you and arrange that you receive your trap. The key people in rat trap distribution are our street co-ordinators – they are the ones who are gathering the catch results each month.

There is a steady pattern of catches – some people have caught more than one. Even if you have not caught any rats, we'd like to know this as it gives us more information on where we need to focus our efforts.

We have had great support this year from The Forest Bridge Trust who have helped us with advice and paying for most of the traps and tunnels that we have distributed. It is great to be working alongside this progressive group who have a vision of the pest free corridor from the Kaipara to the Whangateau/Ti Point/Leigh/Pakiri coastline.

Please keep recording what you catch (including zero catches), and our street co-ordinators will collect this data from you in time. You can also share photos of what you are catching on the *Pest Free Leigh* Facebook page

HAPPY TRAPPING

Liz Jones



We also offer the following:

- ♦ Water Filters
- ♦ Pool Valet Service
- ♦ Water Testing
- ♦ Water Treatment
- ♦ Spray Equipment
- ♦ Mobile & Workshop Services

31 Woodcocks Road, Warkworth ♦ Phone 09 425 9100  
E: [splashwater@xtra.co.nz](mailto:splashwater@xtra.co.nz)

# Leigh Volunteer Fire Brigade

November was a little quieter for Leigh brigade members with eight callouts. These were to false alarms at Leigh, Whangateau and Goat Island, a tree across the road on Pakiri Hill and medical calls to Leigh (3) and Goat Island.

The Junior Firefighter Programme which ran over five weeks concluded with the participants showing their parents various skills learned, from dialling 111 and calling emergency services, dealing with first aid injuries and exiting a burning building and going to a safe meeting point. All 10 children enjoyed themselves and were presented with a certificate and a Leigh Junior Firefighter T-shirt at the completion of the course.

Good to see such a good turnout of locals at the brigade's recent honours night. The event was also a tribute to ex-fire chief Steve Paddison, who stepped down after 25 years in the role. Other brigade members also received service awards.

Thanks to the generosity of the Leigh and local area community the brigade has been able to purchase a top level CPR mannequin. This is a huge asset for brigade members to practise their CPR skills and has the advantage of being able to plug into our AED devices to simulate a real emergency and how we will deal with it. In addition to this a 70kg practice dummy which can be used for rescue training is also on order. As St John Ambulance are unable to provide training for our first responders until at least next July these training devices are a real asset.

Hopefully everyone has a safe and happy Christmas and New Year. Leigh Brigade members will be on duty as normal over the summer holiday period.

*Tony Enderby*





**GOAT ISLAND  
MARINE DISCOVERY CENTRE**  
THE UNIVERSITY OF AUCKLAND  
NEW ZEALAND  
Te Whare Wānanga o Tāmaki Makaurau



**Open  
10 to 4pm  
weekends, school &  
public holidays**  
now to 30 Nov

Open everyday  
1 Dec to 30 April

**09 923 3645**  
[www.goatlandmarine.co.nz](http://www.goatlandmarine.co.nz)

## DIGITAL PRINT CENTRE Chappell Printing Ltd

- Laser prints & copies
- Scan from prints
- Large format prints
- Large scanning
- Laminating
- Canvas prints
- Binding

**Phone 0274 300 447**

**10 Brampton Rd Snells Beach**

**Email: [chaprint@xtra.co.nz](mailto:chaprint@xtra.co.nz)**

**[www.chappellprinting.co.nz](http://www.chappellprinting.co.nz)**

## Leigh General Services

### Minor Building Works

Fences , Decks

Carports etc

Water-blasting - Painting

All work considered

30 yrs Building experience

Phone Bryn 0226369801

**WINTER**



**THURSDAY**

TAKEAWAY ONLY 5-8PM

**FRIDAY** CHEAPPZZA

**5PM - LATE**

**SATURDAY**

**12PM - LATE**

**SUNDAY**

**12PM - 7PM**

**09 422 6019**

**SAWMILLCAFE.CO.NZ**

## SECTION SERVICES

### TREES:

pruned, reduced,  
removed

### HEDGES:

trimmed, reduced

Phone Dom 027 222 1223

[dguzzo2000@yahoo.com](mailto:dguzzo2000@yahoo.com)



17E Totara Ave Leigh NZ 0985

Mobile 02108916855

Email: [foundationleighnz@gmail.com](mailto:foundationleighnz@gmail.com)

Find us on FB Foundation Gallery  
& Arts Hub

or Instagram [Foundation\\_gallery\\_nz](https://www.instagram.com/foundation_gallery_nz)

## need computer help?

We're based in Leigh, and come to you.

Special discounts for locals!

**mobit.**

PCs, Macs, desktops, laptops, phones, tablets  
televisions, and more. Any and all of your  
technology troubles solved, finally.

*For more information and pricing,  
please just give us a call, or visit our website:*

**09 952 4568**

**[www.mobit.nz](http://www.mobit.nz)**

## Matakana Grooming Studio

Healthy Pets Naturally

Karen Person

Mb:0274377163

Ph:094227486

[www.pethaven.co.nz](http://www.pethaven.co.nz)



[matakanadoggrooming@xtra.co.nz](mailto:matakanadoggrooming@xtra.co.nz)



## WHANGATEAU HALL

### Musical Events at Whangateau Hall

The hall is getting quite busy with weddings and other celebrations! On the social scene, December 26th will see our annual Boxing Day "leftover potluck and white elephant gift exchange" party. All are welcome! Bring along a dish to share made from Christmas leftovers (or not, you can cook something new if you prefer!), and a wrapped gift to exchange. There will be music of some description, although you never know what you'll get. Some years we've had a piano player playing carols, some years we've had an open bluegrass jam or sing-around, or we could have an open mic set up for anyone wanting to perform a few. What will it be this year? There's only one way to find out! Join us about 3pm on Saturday, December 26th!

No concerts are currently scheduled for January, but there will probably be two. Keep an eye on the Love Leigh Facebook group and [www.whangateau.co.nz](http://www.whangateau.co.nz) for updates. On Thursday, February 18th we will be having bluegrass super group You, Me, Everybody in concert. These are the absolute best bluegrass musicians performing in New Zealand today. If you liked Lonely Heartstring Band and AJ Lee, you will love this amazing band. \$15, 7:30pm. More info about buying tickets will come out via newsletter, Facebook or web closer to the day! From the entire Whangateau Hall and Reserve management committee, Happy Holidays!! *Jenine Abarbanel 021 428 568*

#### NOMINATE A LOCAL GOOD SORT

The Leigh Community Church has run the Good Sorts column since 2013. Many fantastic locals have been the Good Sort of the month over the years but there are others out there who also deserve the award.

If you know someone like this who has not yet been nominated, please write in a few words their good deed or thoughtfulness, including their name, address and phone number and drop it into the Leigh General Store in an envelope marked "Good Sort" or email the Editor at [LeighRagNZ@gmail.com](mailto:LeighRagNZ@gmail.com).

***The person considered most deserving will receive home baking courtesy of Leigh Community Church.***



## LEIGH ELECTRICAL LTD

RESIDENTIAL AND COMMERCIAL

### JOE ROBERTS

Phone: 021 220 3717

[info@leighelectrical.co.nz](mailto:info@leighelectrical.co.nz)

42 Hauraki Rd, Leigh, 0985

GOAT ISLAND NZ

## GLASS BOTTOM BOAT TOURS

### KAYAK & SNORKEL HIRE

*Look, learn, play & explore!*

See marine life, caves & reefs aboard  
our 45-minute fully commentated tour!

Located on the beach, Goat Island  
Marine Reserve. Bookings essential.



[www.glassbottomboat.co.nz](http://www.glassbottomboat.co.nz) [info@glassbottomboat.co.nz](mailto:info@glassbottomboat.co.nz) 09 4226334/027 4979764



# LJ Hooker

We have been selling Leigh for almost 30 years, love working and living here and supporting our community, and we are continually achieving great results for our clients.



For all your real estate  
needs pop into our

**Leigh Office**

or call me on

**021 490 039**

☎ **Marie-Dominique 021 490 039**

@ [mlennan.warkworth@ljh.co.nz](mailto:mlennan.warkworth@ljh.co.nz)

📞 09 425 8589

✉ 20 Cumberland St, Leigh

20 Queen St, Warkworth

🌐 [warkworth.ljhooker.co.nz](http://warkworth.ljhooker.co.nz)

📘 [facebook.com/Leigh.Matakana.Properties](https://facebook.com/Leigh.Matakana.Properties)

**LJ Hooker**

**Leigh**

Broadbents 2001 Limited Licensed Agent REAA 2008

## Leigh Tennis Club

Over Christmas and the holiday period we are keen to see that club members and visitors take advantage of the great facilities we have at Leigh Tennis Club. It is only \$50 to join as a senior member or \$100 for a family membership. This gives you access to the courts whenever you want to play.

For casual players you can get access to the courts by contacting one of the members whose names and phone numbers are on the Clubhouse door. We also have committee members' phone numbers on our Leigh Tennis Club Facebook Page. The rate for casual play is \$5 per person - \$20 for 4 playing doubles. If you own a B&B, contact us for a one off yearly fee allowing all your guests to play on the courts.

Club days are Saturdays from 3pm. Come and join the friendly competition with the regular players. There is also a session on Thursday mornings from 9.30 am for those returning to tennis and looking for a gentler pace and another regular Club day on Thursday night at 5.30 pm.

Please Everyone - remember to close the courts when you leave!

Well 2020 is nearly behind us. It has been a roller coaster year, with Covid lockdowns and the disruptions that has caused. There was a note of sadness too for the Leigh Tennis Club with the recent death of James Wyatt whom we all enjoyed playing tennis with. Our thoughts are with Brittany and Kieran and the Wyatt Family.

Best wishes to all in the Leigh Community for Christmas and 2021.

New member inquiries are welcome.

Phone Marie-Dominique 021 490 039.

### Shadze of Lace

Sizes 10-22

Locally designed and made  
clothing.

Dressmaking/Alterations/  
Repairs

15 Elizabeth St,  
Warkworth

Ph 09 425 0515

[www.shadze.co.nz](http://www.shadze.co.nz)

### REEL BLUE SPORTS

**Fishing Tackle**

***For all your local fishing needs***

Hooks, Braid	Fluorocarbon Leaders
Game Swivels	Hapuka Rigs
Live Bait Rigs	Richter Game Lures
Innovative Lures, ESCA Hapuka Attractors	
Metal Jigs, Inchiu Jigs, Slow Jigs	

Email: [reelbluesports@gmail.com](mailto:reelbluesports@gmail.com)

**Ph 027-777-3-222**

**Buy on line and save**

***Support local business***



webster|malcolm|law

**Trusted  
Approachable  
Experienced**

15 Neville Street, Warkworth

**09 425 8037**

info@webstermalcolm.co.nz  
www.webstermalcolm.co.nz

## **Leigh Hall Working Bee On Sunday January 10th From 10.00 am**

A working bee will be held at the Leigh Hall to install curtain rails and hang curtains, to modify storage spaces, reorganise and declutter.

Looking for many hands, who can demolish, build, lift, move and sort.

Phone Lynn Mellsopp if you can help 027 286 8625

## **Helpful Contacts**

*For all emergencies dial 111 and ask for police, ambulance or fire*

**Auckland Council** 09 301 0101 toll free

**Auckland Transport:** public transport enquiries 0800 103 080

**Healthline** 0800 611 116 for 24-hour medical services

**Graffiti Coordinator** – Lionel Anderson 021 795 306 call or txt with location of graffiti

**Lifeline Helpline** Call 0800 543 354

**Northlink Health** enquiries for Home Help Ph 0800 425 999

**North Shore Hospital Emergency Care** 0800 809 342

**Orca Hotline** Call 0800 733 6722 to report orca sightings.

**Police Non Emergency** Dial 105 theft, vandalism, shoplifting, lost property, stolen cars, drugs etc. or 0800 105 105

**Warkworth Police Station** 09 425 8109 8am-4pm Mon - Fri

**Shorecare Accident & Medical:** 24/7, Sovereign House, Smales Farm

**Takapuna National Poison Centre:** 24 hrs advice 0800 764 766

## **LEIGH PLANTS 18 Old School Road**

**Hardy, outdoor grown  
Native and exotic**

*Reasonable Prices*

**Phone  
021 0233 9031**

## **ALLEN ELECTRICAL LIMITED**



Electrical, Refrigeration  
and Heat Pumps  
(Residential and Commercial)

**Call Ray at 021 025 22294**

**Email [r.allen@xtra.co.nz](mailto:r.allen@xtra.co.nz)**

PO BOX 35,  
LEIGH 0947

## Community Directory

**Forest & Bird Coast Care Group** - a community initiative to restore reserves and bush areas through monthly weeding and planting bees - Neil Sutherland 422 6001

**Leigh Badminton Club** - Anyone interested in re-starting this club call Dennis Humphrey 422 6625

**Leigh Bowling Club** - to foster fellowship and the game of bowls. New members welcome. President Biscuit McLean 027 590 4829 or Secretary Glen Walker 4226486

**Leigh Business Community** - meets 3<sup>rd</sup> Wednesday of month - Jan Scott 422 6681

[LeighbytheseaNZ@gmail.com](mailto:LeighbytheseaNZ@gmail.com) or [www.leighbythesea.co.nz](http://www.leighbythesea.co.nz)

**Leigh Cards 500** - 1pm - 3.30pm Tuesday, Leigh Bowling Club, all welcome, \$3.00

**Leigh Cemetery Trust** - Secretary Joyce McCormick 422 6893

**Leigh Church** - Church Hall bookings please Phone (09) 425 8054

**Leigh Community Club** - meets quarterly, Anzac Day Service, Interesting speakers, council communication, care of walkways, beaches and more.

[leighcommunityclub@gmail.com](mailto:leighcommunityclub@gmail.com) President Guy Parkes 021352588

**Leigh Community Preschool** - 422 6516 [www.leighpreschool.co.nz](http://www.leighpreschool.co.nz)

**Leigh Girl Guides, Brownies & Pippins** - Fay Bradnam 021 0279 0161

**Leigh Hall** - Bookings / enquiries phone Lynn Mellsopp 027 2868 625 or email [leighhallauckland@gmail.com](mailto:leighhallauckland@gmail.com)

**Leigh Harbour Valley Society** - 422 6880 [www.leighharbourvalleysociety.org.nz](http://www.leighharbourvalleysociety.org.nz)

**Leigh Library** - 'The Cottage' opposite Leigh Store. Librarian Tracey Lawton 021 825 818 / 422 6944

**Leigh Penguin Project** 0211671524 or email [leighpenguins@gmail.com](mailto:leighpenguins@gmail.com)

**Leigh School** - 422 6031 [www.leigh.school.nz](http://www.leigh.school.nz)

**Leigh Tennis Club** - [leightennisinc@gmail.com](mailto:leightennisinc@gmail.com)

**Leigh Walking Group** - meets Mondays at 9.30am for interesting walks throughout the Rodney, Kaipara and Auckland regions. Valda Paddison [paddis@xtra.co.nz](mailto:paddis@xtra.co.nz)

**Leigh Women's Bowling Club** - meet Tues, Oct -April, for friendly bowls. New members very welcome. Bev Cassidy 4226599

**Matheson Bay Neighbourhood Assn** - Secretary Peter Spence 021 404 529 or [mathesonbayassn@gmail.com](mailto:mathesonbayassn@gmail.com)

**Pakiri Community Landcare Group** - Frankie 021 688 997 or [nick@nickmolloy.co.nz](mailto:nick@nickmolloy.co.nz)

**Pakiri Tennis Club** Contact Linda Taylor (Secretary) on 021 242 7459

**Pest Free Leigh** [pestfreeleigh@gmail.com](mailto:pestfreeleigh@gmail.com); [www.facebook.com/groups/pestfreeleigh](https://www.facebook.com/groups/pestfreeleigh)

**Plunket** meet 1st Monday of month Leigh Church Hall Contact Adele 0272901915

**Rodney Rams** Secretary Amy Weller 021 138 1407 [rodneyrams@outlook.com](mailto:rodneyrams@outlook.com)

**Tawharanui Open Sanctuary Society Inc. (TOSSI)** - [www.tossi.org.nz](http://www.tossi.org.nz) Secretary Karyn Hoksbergen 09 585 1315 email [secretary@tossi.org.nz](mailto:secretary@tossi.org.nz)

**Whangateau Acoustic Music & Social Club** - [www.whangateau.co.nz](http://www.whangateau.co.nz)

**Whangateau Neighbourhood Support** - Sharyn Carew [sharyncarew@vodafone.co.nz](mailto:sharyncarew@vodafone.co.nz)

**Whangateau Residents & Ratepayers Assn** - meets 7.30pm, 2<sup>nd</sup> Tuesday of month at Whangateau Hall. Audrey Sharp 422 6209 or Hugh McKergow 422 6219

## JUSTICES OF THE PEACE & CELEBRANTS

**JP** - Fay Bradnam 422 6038

**JP & Wedding Celebrant** - Dr John Peebles 021 974 247

**Celebrant** - Annie Mellor [www.fabulousweddingnz.com](http://www.fabulousweddingnz.com) 027 929 7767

## FACEBOOK

**Leigh Community Club** - [www.facebook.com/Leighcomm/](https://www.facebook.com/Leighcomm/)

**Love Leigh** - [www.facebook.com/groups/LoveLeigh/](https://www.facebook.com/groups/LoveLeigh/)

**Leigh by the Sea** - [www.facebook.com/pages/Leighbythesea/251994924849626](https://www.facebook.com/pages/Leighbythesea/251994924849626)

**Leigh Historical Photographs NZ** - [www.facebook.com/groups/739949979454558](https://www.facebook.com/groups/739949979454558)

If your club or group does not appear, please advise the editor.