

LEIGH RAG

November 2020

Leigh Rag is supported by the Leigh Community and compiled and edited by Helen Parkes
22 Harbour View Rd Ph 021484432
Please submit contributions **before the 15th** of each month.

Email to leighragnz@gmail.com

Please Note: The Editor of the RAG does not take any responsibility for the contents of items supplied.

Newsletter for Leigh, Matheson Bay, Whangateau, Pakiri

**Sponsored by Leigh Community Club,
Leigh Fisheries and the Leigh General Store**

View the Leigh Rag online

www.leighbythesea.co.nz/news-events

Leigh Hall **CHRISTMAS CRAFT MARKET**

Come and see our newly refurbished hall.

Sunday 6th December

10.30 – 2.30



Refreshments Available.

To enquire about a \$10 selling table contact Lynn Ph 0272 868 625



Leigh Business Community

The Leigh Business Community are a varied group that encourage and support local business owners. As part of the promotion of business in the arewe would like to profile local attractions for residents and visitors. This month we introduce you all to Ti Point Reptile Park.

Ti Point Reptile Park is New Zealand's largest collection of Reptiles, displaying over 40 species from Aotearoa and around the globe. See tiny Elegant Geckos (a local Leigh species), baby Indian Star Tortoises, Tuatara, massive Green Iguanas, carnivorous Lace Monitors and everyone's favourite the American Alligators plus much more. Bring your picnic and enjoy the animals and park grounds set amongst regenerating native bush with stunning sea views and bush walk. The park also offers education sessions for schools and groups with a focus on the conservation of native species.



Open every day (except Christmas Day) Ti Point Reptile Park offers a fun and educational outing for all ages.

Open Daily 10am – 5pm Email enquiries@reptilepark.co.nz ph 09 422 6021

Leigh Business Community www.leighbythesea.co.nz to find out more. For any information about the Leigh Business Community, please contact Jan Scott 094226681 or email LeighbytheseaNZ@gmail.com

LEIGH MOTORS 2017 LIMITED

- FULL MECHANICAL REPAIRS
- WOF & SERVICING
- TRAILER HIRE
- **FUEL 24 HOURS - Self Service**
- NZC -Drop off -Pick up
- BATTERIES
- GAS BOTTLE SWAP
- TYRES
- BAIT & ICE

Come and chat to our friendly team for all your mechanical requirements

Ph: 09 422 6077

EMAIL—leighmotors2017@gmail.com

RESULTS OF THE LEIGH COMMUNITY CLUB

100 RAFFLE

1st Prize \$300 #22

2nd Prize \$150 # 23

3rd Prize \$50 #75

Congratulations to Patricia Gundy, Felicity Wyatt and Sue Cole

Next draw due on Nov 27 @ 5 pm Leigh Bowling Club.

LEIGH SUNFLOWER COMPETITION

Hopefully your plants are
thriving in your gardens

PRIZEGIVING TO BE HELD
AT
Leigh School
1pm Sunday
31 January 2021



Your Local
Painter/Decorator
with over 25 years experience
serving all surrounding areas.

Leigh Decorators

- Painting
- Paperhanging
- Roofs
- Airless Spraying
- Stopping
- Repaints
- New Homes

For your Free Quote and/or
Consultation,

Phone Gary

Home: 09-422-6695

Mobile: 021-024-44941

Email:

leighdecorators@outlook.com

DIAL A DIGGER earthworks

- Site Works & Foundations • Drainage & Driveways
- Drilling < 600 mm • Section Clearing • 8 Tonne Tipper Available

Brian George experienced & efficient operator

021 749 594 Brian | 09 422 6267 Office
info@dialadigger.co.nz



Leigh Hall

By the time the Rag is published the hall renovations being done by Council will be nearing completion. Painting and major electrical work is well underway now, and we expect the work to be completed by the end of November. The committee wishes to thank all those who supported us in nudging Council to get these renovations underway in the light of their reduced budgets – we are thrilled that Council saw the need for this often used and much-loved community facility to have a facelift. Also, a big thank you to hall users who have patiently waited for this work to be done and who have had to make other arrangements for 5 or 6 weeks. The Hall Committee have decided to use fundraised money to provide new blackout curtains through the hall so it should look great.

To celebrate the reopening of the hall we are running a Christmas Craft Market on Sunday 6th December, 10.30 to 2.30pm. Come and see our refurbished hall, do some Christmas shopping, buy some refreshments and support our local community.

Stall spaces at \$10 per table still available.

Lynn Mellsopp

All enquiries to Lynn ph 0272 868 625 or
email leighhallauckland@gmail.com.

Leigh Church Services

All denominations and visitors are most
welcome to join with us each

Sunday at 11 am

**There is a prayer meeting every
Sunday at 10.30 am.**

Children's Ministry enquiries

Ph: Janette 422 6204



All welcome.

LOCAL BUSINESS

wanting to promote goods &
services.

Advertising space is available
from \$20 for 1 insertion or
\$80 for 10 issues

Contact the Editor
leighragnz@gmail.com

Lynn Millett RC Animal Homeopath

Natural, Effective, Safe and Affordable

As an Animal Homeopath I specialise in working
with all animals who suffer from Skin Conditions,
Allergies, Arthritis, Incontinence, Diabetes and
Behaviour problems.

Phone: **Lynn 021 579 398** or email
lynn.millett2017@gmail.com

Home visits are available, and clinic room is
located in Warkworth at
Warkworth Natural Therapies,
By appointment only. www.wnt.co.nz

COASTAL PAINTERS

Interior/Exterior

Leigh & Surrounding Areas

Call David 021 156 3461

David@coastalpainters.nz

Leigh Community Club

As spring gives way to summer it's fantastic to see so many people out and about making full use of our coastal paradise. With recent announcements that a Covid 19 Vaccine is likely to be available in 2021 we can start to see that there is an end in sight for this pandemic which has affected so much of our daily lives.

We can now plan more confidently around events and so the Club is delighted to advise that Santa will be in Matheson Bay for the annual Children's Xmas and Beach Party on Friday the 18th of December, see below for full details

Don't forget to check and rebait your rat traps once a week as part of your gardening routine.

Guy Parkes, Chair, Leigh Community Club, Ph: 021352588

E: leighcommunityclub@gmail.com

**LEIGH & MATHESON BAY
COMMUNITY BEACH &
CHILDRENS XMAS PARTY
FRIDAY 18 DECEMBER**

4.30PM TO 7.00PM MATHESON BAY RESERVE

Childrens Games, Childrens Prizes, Fire Truck, Santa

Entry FREE (Bring your own picnic & drinks)

Sponsored and Organised by



Leigh Community Club, Leigh Business Community





Leigh School

It was a perfect spring day for the school and pre-school children to dress up as pollinators and petals to parade around the school courts. This was the start of a very busy day/week! Leigh School held a Scholastic Book Fair and Te Wiki Ako week. The children invited VIPs to come along to the school and visit the classrooms, purchase books and enjoy a beautiful morning tea. Thank you to Mrs Vikstrand and Melissa Crockett-Joyoue for organising a highly successful event. The school made \$2600 in sales, which gives the teachers \$1750 to spend on new books for the school library! A special thanks to all the parents for the delicious baking and to the PTA for organising the morning tea for the VIPs to enjoy.

Soon after the 3pm bell, the school basketball teams played two games for everyone to enjoy. The PTA put on American hotdogs.

To finish the week, the children held a crazy sock day and favourite book day on Thursday, and on Friday they enjoyed their lunch under the trees at the Leigh Library.

You may have noticed the tamariki on the school field each afternoon practicing shot put, discus, high jump, long jump and sprints. Congratulations to all the children for participating in Leigh School Athletics and a big paki paki for those who qualified to represent Leigh School at Inter School Athletics next week. Good Luck!

End of Year Prizegiving will be held on Friday 11th December @11am in the Leigh Hall.

Last day of school is Thursday 17th December.

Noho ora mai,

Kate

This month's GOOD SORT is **Lynn Garner** our awesome Mail Sorter who we all rely on for her knowledge and expertise but unfortunately also sometimes take for granted. Nominated by Errol & Lorna who wrote.... 'We were appalled to hear you (Lynn) had received complaints and abuse. We see the wonderful job you do sorting the mail accurately, promptly and often involving detective work trying to find the correct home for difficult mail. Don't let the 1% of moaners take from you as we can assure you the other 99% of us appreciate the great job you do.' **Lynn**, the job you do is most deserving of recognition and the folk at Leigh Community Church are delighted to bake for you.



Trinity Chiropractic, 50 Golf Road,
Warkworth, 0985. Ph. 09 422 7917.

LEIGH GENERAL STORE OPEN 7 DAYS

- ▶ Groceries
- ▶ Ice Cream & Drinks
- ▶ Fresh Fruit & Vegetables
- ▶ Magazines, Postcards & Films
- ▶ Free Range Eggs
- ▶ Hardware & Seeds
- ▶ Bait & Fishing Gear
- ▶ Wine

EFTPOS AVAILABLE
Phone 09 422 6034

Waste Free Leigh

The Leigh Waste Minimisation
sewing group meets

Thursdays and Mondays

9.30 am to 11.30 am.

Come along and enjoy some
company with your own sewing
knitting or craft project.

We encourage home crafts and help
with skills to re-use, repurpose and
create items.

Meeting at 96 Frost Road

Last drive on the right
Until the Hall is available

Proper Hand Washing is still an
important and effective way to
eliminate the spread of the Covid 19 virus.
Please keep it up and stay safe.



MOWING

Sections, Large
Lawns &
Lifestyle Blocks



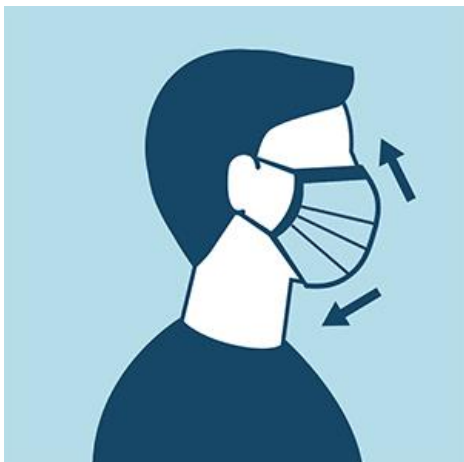
TRACTOR WORK

Post Thumping Spraying etc

CRANE TRUCK Rubbish removal

General Lifting up to 2 tonne

**Ph FRICK 0211230997 or
09 4226 223**



Local News

This is a busy time for **Parcel deliveries**.

All **NZ Post** parcels are delivered to your rural Post Box or The Leigh General store if you are in the village.

NZ Courier deliveries are at Leigh Motors if they are not delivered directly to your home.

Please note that it is a busy time for parcels and both the Leigh General Store and Leigh Motors would appreciate packages being collected promptly as they each have limited space.

Other Couriers should deliver directly to your door.

Regular events at the Leigh Hall

Monday 9.30 - 11.30pm Sewing with Waste Free Leigh (downstairs)

Monday 6 - 7pm Dancing with Spinning Sun / Ann Dewey

Tuesday 9.30 - 11am Yoga with Marion Chateau

Thursday 9:15 - 10:15am Dancing with Spinning Sun / Ann Dewey

Thursday 9.30 - 11.30pm Sewing with Waste Free Leigh (downstairs)

Friday 12 noon - 1pm Nia class (exercise to music and yoga) with Amara Labb

Please contact your class providers for locations and times while the Leigh Hall undergoes refurbishment.

Programme is expected to be back to normal EARLY DECEMBER



**RODNEY
SEPTIC
TANK CLEANING**

PETER CAIRNS

Telephone: 09 422 7166

Mobile: 0274 946 370

The Knitting Truck

yarn, needles, patterns, ready made
knitwear and classes

We primarily stock N.Z. Yarn and
locally made products

**Open 6 days Weds – Mon
10-4**

Closed Tuesdays

Based at Charlies Gelato

17 Sharp Rd Matakana

021-194-5631

WHANGATEAU TWILIGHT MARKET

**Friday 27th November
4pm till 8pm**

Local market stalls
stall holders welcome.
Sausage sizzle.

NOTICE OF ANNUAL GENERAL MEETING

is hereby given of
**Rodney Rams Rugby League
& Sports Inc.**

to be held at club rooms 511
Leigh Rd, Whangateau Saturday
5th December 2020,
commencing 10.00am.

All enquiries
to rodneyrms@outlook.com

EARTHPRO

M A T A K A N A L T D

TRUCKS ■ DIGGERS ■ METAL

driveways ■ house sites ■ hard landscaping ■ ponds ■ section clearing
farm drainage & race maintenance ■ commercial site preparation
drilling ■ rock breaking ■ retaining walls ■ and all other earthworks

021 557 873 ■ earthpro63@gmail.com

We cover Rodney ■ 25 years experience ■ Locally owned & operated ■ Quality & Service Guaranteed



Graphic Design | Web | Custom Art

Based in Leigh - Contact for a quote:

john@alchemydesign.co.nz | +64 21 207 2793

Letters to the editor

*This space is open for
contributions published at the
discretion of the editor.*

*Please send to
leighragnz@gmail.com .
If you have an event to promote
or something pertinent to this
Pakiri, Leigh or Whangateau
communities please let me know.*

What's Going on around here?

If you have an event coming up, send an email to leighragnz@gmail.com and it can be included in this monthly notification

| <i>What Date</i> | <i>What is it</i> | <i>When</i> | <i>How much</i> | <i>Where</i> |
|--------------------|---|----------------------------|-----------------|---|
| Nov 13 - 10 Dec | John Wright Exhibition | 10am –3pm | | Foundation Gallery 17 Totara Ave Leigh |
| Nov 27th Fri | Twilight Market Also Dec 17th | 4pm– 8pm | | Whangateau Hall |
| Dec 5 th Sat | Smoke on the Coast (Low n slow cooked meat comp) | 7.00 am for competitors | | Whangateau Holiday Park |
| Dec 5th Sat | Rodney Rams AGM | 10.00am | | Rams Club rooms Whangateau |
| Dec 6th Sunday | Christmas Craft Fair | 10.30 am to 2.30pm | | Leigh Hall |
| Dec 6th | Community Club Meeting | 4pm to 5pm | | Leigh Bowling Club |
| Dec 18th Fri | Leigh Community Club Christmas Family beach party | 4pm to 6 pm | | Matheson Bay |
| Dec.21st Monday | Carol Singing | 6.30.pm | | Leigh Community Church |
| Dec 26th- 31st | Waste Free leigh Pop Up Shop | 10 –3 pm daily | | Foundation Gallery Totara Ave |



Rochford Landscapes & Mini Diggers **Leigh Local** **Covering all aspects of Landscape Construction**

As well as our successful landscape construction and mini digger services, we are now offering a Greenscape division offering:

- Hedge and tree trimming
- Planting services
- Lawn installation
- Section clearing and waste removal
- Garden maintenance and installation
- Revegetation and wetland installation
- Lifestyle block maintenance

021 939 117
accounts@rochfordlandscapes.co.nz

Forest and Bird COAST CARE GROUP Leigh.

Tremendous thanks to the team who launched Pest Free Leigh a couple of weeks ago. It must have been so rewarding for them to have had such a stunning response from our local community. It was particularly important for our Coast Care Group because it brought together the other strand of our pest plant removal project i.e. the removal of pest animals. The talks at the launch were largely about the 'big picture' aim, to get the birds from Hauturu/Little Barrier flying across to Leigh and finding a safe haven to nest. It is also about restoring the habitat for native skinks and geckos, insects, and ultimately even the life in our streams. What a thing to dream of, and with a community like ours, it's very achievable.

With Covid, AC has not allowed working bees, but now we're at Level 1, they can resume. The bush on the coastal walkway at the steps end of Kowhai Tce has become very overgrown since the closure of the walkway for the bridge replacement two years ago. We now need to get that area back in order, and catch up **November working bees** are scheduled. Please do join our community team on one or both of these days by meeting at the end of Kowhai Tce from 9 to 11 a.m on Thurs 19th and/or Thurs 26th. Put it in your diary. We're a good team. You'll enjoy it!

Neil Sutherland. ph4226001



The Insurance Lady

Sue Cole IBANZ, PIB

Insurance Broker, Financial Adviser 28045

027 422 7668 • A/H 09 422 7668

sue@dhabrokers.co.nz

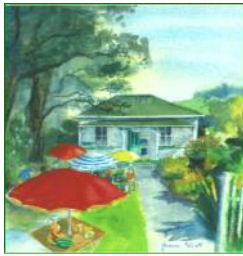
30 Years Insurance Industry

Experienced in Domestic & Commercial, Fire and General Insurance.

Please email or phone for a quote.



***Member Broker of PSC Connect Steadfast Group**



LEIGH VOLUNTEER LIBRARY

Situated in The Cottage opp General Store

OPEN: Tuesday 2pm-6pm

Wednesday 2pm-4pm

Thursday 11am-1pm Saturday 9am-1pm

Kia ora Leigh whanau

It feels like summer is here already and we had a perfect day for the Leigh School children to have lunch on the library lawn and then explore the Leigh Library. The children were given forms about joining the library if they weren't already members and it would be lovely to have more children and their families join.

Thank you to the fabulous teachers at the school for organising this day as part of book week.

Of course we have some fabulous new books; Trust by Chris Hammer carries on the story of Mandalay Blonde and Martin Scarsden, two main characters from Scrublands, as they are trying to build a new life together. Mandalay is kidnapped and as they say, the story thickens!

There's also a new thriller by Hakan Nesser that should appeal to 'Scandi Noir' fans and we have Vincent O'Sullivan's new book about his friend and artist Ralph Hotere. There's much more so come in and see what's new and exciting on the shelves!

Tracey

FOR ALL EMERGENCIES

DIAL 111

Fire - Ambulance - Police

Don't waste valuable time trying to find local numbers to call if you need fire, ambulance, police or assistance.

Call 111 and ask for the appropriate service.



MATAKANA GLASS

TOP GLASS SERVICE

**FAST FRIENDLY
WINDOW REPAIRS**

021 - 027 - 81204

www.matakanaglass.nz



LEIGH BOWLING CLUB

Our season is in full swing with a busy calendar of competitions and events.

Twilight Bowls are back on Friday evenings if you would like to come along and have a roll. Please wear flat soled shoes We have bowls available for you to use. Names in by 5.30pm
phone 09 422 6252

LEIGH TENNIS CLUB

TENNIS FOR ALL!

Thursdays 9.30-11am
Thursdays from 5pm
Saturdays from 3pm

Leigh Tennis Club,
Albert St, Leigh

If you wish to play at the above times, can you contact Liz Jones
Ph 021 0721 101.



In the heart of Leigh Village
*Five stylish self-contained motel units
and five boatshed cabins
all with a retro beach vibe*
Boutique Motorhome/Caravan Park
Function and Events Venue
www.leighcentral.co.nz
Phone: 09 422 6070
Mobile: 021 246 0757



Snorkel Hire Schools Information

2 Seatoun Avenue
RD5 Leigh
021 92 6212

www.theoctopushideaway.nz

LEIGH RAG

ADVERTISEMENT RATES

Deadline 10th of month

Standard size adverts
\$20 each or \$80 for 11 issues
(Larger ads priced as required)

Email leighragnz@gmail.com

Phone Helen Parkes Editor
021484432

BUILDING PLANS & CONSENTS

Geoff Alexander (NDAT)
LBP # 123496
Ph. 09 422 6624
Mob. 0272 260 161
alex.g.h@xtra.co.nz



Design & Draughting Services

Resource Consents
Building Consents
Concept Design

New Builds
Alterations
Additions

MATHESON BAY NEWS

The bay is looking lovely and the 10ml. of rain 10 days ago has given the stream a good clean out. Some Pohutakawa are coming out which is quite early, so maybe we are in for another hot summer, if Maori forecasting holds true.

We have lost our stalwart, Glen Dalton, who has been very involved in the area and great at keeping an eye on the reserve and moving along people in tents. It will be interesting to see how the freedom camping progresses without him. I, for one will not be asking anyone to move on, having been abused several times in the past. Glen is staying on as the Chair for the Matheson Bay Association until the AGM next year in June and will be trying to get the Auckland Council to actually put the camping limits in place that they proposed and were agreed on by the Association two years ago. We wish Glen all the best in his new abode on the Sugar Loaf.

Pest Free Leigh has just taken on some 'street coordinators' who will liaise with the people who have their rat traps and collect the data to be included on the 'Catch-it' website. The whole idea of doing this was only mooted in December last year and even with Covid 19 has got off to a great start with 150 traps given out and distributed in the Leigh and Matheson Bay area. If you are a Matheson Bay resident (permanent or holiday-maker) and would like to be part of this great initiative to rid the area of rats and increase our native species, give me a call on 422 6844. As one of the street co-ordinators I'll be happy to set you up with a trap.

Louise van Campfort

LEIGH BAR

EST 2014



QUIZ NIGHTS

\$5 per person

6.30pm

First Monday of month

Book tables at Leigh Bar

Numbers are limited

Meals available

LEIGH BAR

EST 2014

Monday Fish & chips 4-8.30pm

Tuesday Steak Night 4-8.30pm

Wednesday Burger Night 4-8.30pm

Thursday Taco 4-8.30pm

Friday **\$5 special** 4-7pm- till late

Saturday and Sunday 12 till late

21 Hauraki Road, Leigh
or call Richard on 021 0419 242

Waste Free Leigh Pop Up Shop

Foundation Gallery

Dec 26 to 31 - 10 am to 3 pm

Gift Bags, shoppers, Beach wraps, Aprons and more.

Introduction to Sewing Introduction to Weaving

Half day courses \$25 per person each lesson



Learning to sew - make a simple bag or apron or get help with your own project.

Max 3 people per session .

Morning 28th 10-12 or Afternoon 30th 1-3pm

An introduction to weaving for anyone who enjoys making things, being creative or just wants to do something different.

Rather than flax, we'll be using strips of soft vinyl to make a container.

Although not waterproof, the resulting pot would make a good flowerpot cover, keep bottles together, a dish to put bread rolls, so many uses!

Sessions available up to 5 participants as there is limited space , Dec 27, 10—12 am and Dec 29 .1—3pm

Sorry, no children under 14

Simple clothing Repairs Hems, seams buttons

All funds go to the Leigh Community Club



GARDEN BAGS

(hold approx. 1 cu.m)

FOR ALL **GREEN** WASTE

DROP OFF – PICK UP

From \$20 each

Phone **FRICK**

021 123 0997

or 09 422 6223

Keep Leigh Waste Free

Remember to:

**Refuse, Reduce, Reuse,
Repurpose,
Rot, Recycle and
Repair.**



PEST FREE LEIGH

pestfreeleigh@gmail.com

THANK YOU to the 120 Leigh locals who attended our launch last month. Since then we have had lots of interest from others, wanting to know more and to get their free rat trap.

The local uptake has been so great that Ross, Paul and Kevin are already planning construction of the next

200 rat trap boxes.

I am thrilled that we have half of the volunteer street co-ordinators we need already signed up, and a huge thank you to all of you. Street co-ordinators will be working with about 20 neighbouring households to distribute free traps, and collect trapping results. We envisage many of the street co-ordinators will become a connected and social group, and that friends will be made as a result.

We are actively seeking more street coordinators and are keen to hear from anyone who might want to find out more about this critical role.

You can expect to hear from your street co-ordinator in the coming weeks, so please make them welcome. In the meantime, for those of you with traps, please keep setting them (ideally weekly) and feel free to experiment with different lures (eg Nutella, mayo).

Trap boxes often need to age before rats feel comfortable entering them so don't be disheartened if you're not catching straight away. If your peanut butter is 'going missing', try adding a nut or some seeds that insects can't crawl away with. If those go missing too it might be mice and you could try temporarily substituting a mouse trap, but make sure you go back to the rat trap as soon as you can.

Please keep recording what you catch (including zero catches), and our street co-ordinators will collect this data from you in time. You can also share photos of what you are catching on the *Pest Free Leigh* Facebook page

HAPPY TRAPPING

Chris Floyd





Huge excitement! Our first breeding season since the project started and we've already found many nesting sites. With the help of Rua, a tracking dog, and support from Auckland Council, we have been able to inspect these sites with burrow scopes, and now know that several nests have chicks already, and most have two! The birds are preferring to nest in natural sites rather than in the penguin boxes, and that is great.

Because korora are endemic birds we are bound by protocols and only trained and registered people are allowed to interact with the birds. However we are working closely with professional ornithologists and getting huge support from them. Thanks DOC, Auckland Council Biodiversity, and Northern Seabird Trust, and thanks to our wonderful teams of pest trappers too. We're also getting very keen support from the community, and especially from coastal property owners, so it has become a significant Leigh project.

There are two ways we need your further help however.

Chicks are now hatching, and as they grow, the adults leave them to go fishing. This means the young, alone, are very vulnerable to dog disturbance - even sniffing around a nest can disturb them - and we do thank all dog owners who keep their dogs on leads in coastal areas. Most of you do a great job. NB. The project covers most of the coast from Ti Point wharf around to Goat Island.

We also want reports of penguins on land. If they're recent we can follow them up with a site search, but we'd love reports of historical sightings from which we can build up a picture of the past. It may be as simple as "back in the 60s we had penguins nest under our house in Cotterel St" or "as a kid we used to see them come in at Matheson Bay".

Please contact me with any information and I'll follow it up with you.

Neil Sutherland. corsut15@gmail.com, or 0225822713.

I'd love to hear from you If you have spotted a penguin please email leighpenguins@gmail.com



We also offer the following:

- ♦ Water Filters
- ♦ Pool Valet Service
- ♦ Water Testing
- ♦ Water Treatment
- ♦ Spray Equipment
- ♦ Mobile & Workshop Services

31 Woodcocks Road, Warkworth ♦ Phone 09 425 9100
E: splashwater@xtra.co.nz

Leigh Volunteer Fire Brigade

Leigh Volunteer Fire Brigade had another busy month in October with 13 turnouts in total. These included three scrub fires in Whangateau, Omaha and Matakana, false alarms in Leigh (3) and a total of 7 first response medical calls in Leigh and Matheson Bay.

A reminder that we are still at COVID Alert Level 1 so you may see emergency crews in additional PPE such as masks and eye protection. However, this is just precautionary and not necessarily a COVID related response.

This month the brigade had the new Availability and Messaging System (AMS) installed at the station. This is an additional alerting system along with existing pagers, text message and of course the siren. All members received training and had the app installed on their smartphones. This system allows members to say whether they are responding so arriving crews can see exactly who is on their way to the station. This is a very useful tool and is already proving to be popular with members.

Our 3 newest members Ewen McGeorge, Hayley Nessia and Martha Stafford have recently completed their Medical Co-Response course which is a great start to their recruit training. Congratulations to all 3 for the successful completion of this course.

This month also saw the commencement of the Junior Firefighters Programme lead by Nick and Sarah Torkington, and Tony Enderby. This programme is normally designed for secondary school aged children, however between Nick, Sarah and Tony they have adjusted the course to be more suitable for the primary aged kids at Leigh School. Currently we have 10 junior firefighters taking part in this very exciting programme, learning a range of skills such as how to call 111, escape plans for their houses, team work and first aid skills. This programme will continue to run once every school term.

Paul Smith



**GOAT ISLAND
MARINE DISCOVERY CENTRE**
THE UNIVERSITY OF AUCKLAND
NEW ZEALAND
Te Whare Wānanga o Tāmaki Makaurau



**Open
10 to 4pm
weekends, school &
public holidays**
now to 30 Nov

Open everyday
1 Dec to 30 April

09 923 3645

www.goatlandmarine.co.nz

DIGITAL PRINT CENTRE Chappell Printing Ltd

- Laser prints & copies
- Scan from prints
- Large format prints
- Large scanning
- Laminating
- Canvas prints
- Binding

Phone 0274 300 447

10 Brampton Rd Snells Beach

Email: chaprint@xtra.co.nz

www.chappellprinting.co.nz

Leigh General Services

Minor Building Works

Fences , Decks

Carports etc

Water-blasting - Painting

All work considered

30 yrs Building experience

Phone Bryn 0226369801

WINTER



THURSDAY

TAKEAWAY ONLY 5-8PM

FRIDAY CHEAPPZZA

5PM - LATE

SATURDAY

12PM - LATE

SUNDAY

12PM - 7PM

09 422 6019

SAWMILLCAFE.CO.NZ

SECTION SERVICES

TREES:

pruned, reduced,
removed

HEDGES:

trimmed, reduced

Phone Dom 027 222 1223

dguzzo2000@yahoo.com



17E Totara Ave Leigh NZ 0985

Mobile 02108916855

Email: foundationleighnz@gmail.com

Find us on FB Foundation Gallery
& Arts Hub

or Instagram [Foundation_gallery_nz](https://www.instagram.com/foundation_gallery_nz)

need computer help?

We're based in Leigh, and come to you.

Special discounts for locals!

mobit.

PCs, Macs, desktops, laptops, phones, tablets
televisions, and more. Any and all of your
technology troubles solved, finally.

*For more information and pricing,
please just give us a call, or visit our website:*

09 952 4568

www.mobit.nz

Matakana Grooming Studio

Healthy Pets Naturally

Karen Person

Mb:0274377163

Ph:094227486

www.pethaven.co.nz



matakanadoggrooming@xtra.co.nz

WHANGATEAU HALL

Musical Events at Whangateau Hall

As we move into summer, the hall is getting busier with private events such as weddings. We have two community events on, everyone welcome. On Thursday the 17th of December there will be a twilight market. Buy, sell, swap, and socialise. There will be a sausage sizzle, so come hungry. 4pm - 8pm. Then on the 26th of December we have our annual Boxing Day "Leftovers Potluck." Bring your Christmas leftovers to share and enjoy music and conversation with friends and neighbours. We'll have sign-ups at the door for floor spots, and if we have enough pickers, we'll have a jam session or a sing-around. If you'd like to play piano and lead us in Christmas Carols, drop Jenine a line at jenine@torkington.com. We'll also have our "white elephant gift exchange." Re-wrap a gift you would like to "pass forward" and take a lucky-dip chance on someone else's. Hilarity guaranteed.

We don't have any music shows scheduled for December, but that doesn't mean one won't happen. Check the website (www.whangateau.co.nz) for all the latest updates. The website is also your go-to source for information about hiring the hall.

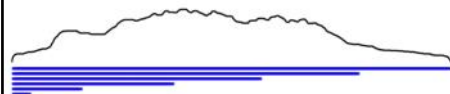
Jenine Abarbanel 021 428 568

NOMINATE A LOCAL GOOD SORT

The Leigh Community Church has run the Good Sorts column since 2013. Many fantastic locals have been the Good Sort of the month over the years but there are others out there who also deserve the award.

If you know someone like this who has not yet been nominated, please write in a few words their good deed or thoughtfulness, including their name, address and phone number and drop it into the Leigh General Store in an envelope marked "Good Sort" or email the Editor at LeighRagNZ@gmail.com.

The person considered most deserving will receive home baking courtesy of Leigh Community Church.



LEIGH ELECTRICAL LTD
RESIDENTIAL AND COMMERCIAL

JOE ROBERTS

Phone: 021 220 3717

info@leighelectrical.co.nz

42 Hauraki Rd, Leigh, 0985

GOAT ISLAND NZ

**GLASS BOTTOM
BOAT TOURS**
KAYAK & SNORKEL HIRE

Look, learn, play & explore!

See marine life, caves & reefs aboard
our 45-minute fully commented tour!

Located on the beach, Goat Island
Marine Reserve. Bookings essential.



www.glassbottomboat.co.nz info@glassbottomboat.co.nz 09 4226334/027 4979764

LJ Hooker

We have been selling Leigh for almost 30 years, love working and living here and supporting our community, and we are continually achieving great results for our clients.



For all your realstate
needs pop into our

Leigh Office

or call me on

021 490 039

☐ Marie-Dominique 021 490 039

@ mlennan.warkworth@ljh.co.nz

📞 09 425 8589

✉ 20 Cumberland St, Leigh

20 Queen St, Warkworth

🌐 warkworth.ljhooker.co.nz

📘 facebook.com/Leigh.Matakana.Properties

LJ Hooker Leigh

Broadbents 2001 Limited Licensed Agent REAA 2008

Leigh Tennis Club

The Leigh Tennis Club held its opening day on Saturday 25 October 2020. It was a beautiful afternoon, a high standard of play, a sausage sizzle and conviviality to keep the crowds amused. The event – wedged as it is between the crowdless US Open at Flushing Meadow and the upcoming Covid affected Australian Open at Melbourne Park – was held in front of a keen band of supporters, talent scouts and observers. The female talent shone on the day with three women – Diana Wyatt, Jan Kippenberger and Rebecca Butts – taking three of the top four spots. Viv Wyatt helped the men with a sneaky third spot.

The enthusiasm generated by this event has stirred the Club into reviving regular club fixtures for the trophies that were last played for in the late 1990s. In those days, the courts were in a sorry state with broken and fractured concrete surface.

Some of the players and trophy winners back then are still active members of the club now. Shows you are never too old to try your hand to play the game for life.

New member inquiries are welcome. Phone Marie-Dominique 021 490 039.



Shadze of Lace

Sizes 10-22

Locally designed and made
clothing.

Dressmaking/Alterations/
Repairs

15 Elizabeth St,
Warkworth

Ph 09 425 0515

www.shadze.co.nz

REEL BLUE SPORTS

Fishing Tackle

For all your local fishing needs

| | |
|--|----------------------|
| Hooks, Braid | Fluorocarbon Leaders |
| Game Swivels | Hapuka Rigs |
| Live Bait Rigs | Richter Game Lures |
| Innovative Lures, ESCA Hapuka Attractors | |
| Metal Jigs, Inchiu Jigs, Slow Jigs | |

Email: reelbluesports@gmail.com

Ph 027-777-3-222

Buy on line and save

Support local business



webster|malcolm|law

**Trusted
Approachable
Experienced**

15 Neville Street, Warkworth

09 425 8037

info@webstermalcolm.co.nz
www.webstermalcolm.co.nz



Creative solutions

Health & Safety in the workplace

Advice, Site Specific Plans, Policies & Procedures
prepared for

**Tradesmen, Businesses, Farms,
Companies or sole traders.**

*Free no obligation quote, give me a call
to discuss your needs*

Wendy Stephens

PO Box 195 Leigh

027 284 9300 or 09 422 6260

Helpful Contacts

For all emergencies dial 111 and ask for police, ambulance or fire

Auckland Council 09 301 0101 toll free

Auckland Transport: public transport enquiries 0800 103 080

Healthline 0800 611 116 for 24-hour medical services

Graffiti Coordinator – Lionel Anderson 021 795 306 call or txt with location of graffiti

Lifeline Helpline Call 0800 543 354

Northlink Health enquiries for Home Help Ph 0800 425 999

North Shore Hospital Emergency Care 0800 809 342

Orca Hotline Call 0800 733 6722 to report orca sightings.

Police Non Emergency Dial 105 theft, vandalism, shoplifting, lost property, stolen cars, drugs etc. or 0800 105 105

Warkworth Police Station 09 425 8109 8am-4pm Mon - Fri

Shorecare Accident & Medical: 24/7, Sovereign House, Smales Farm

Takapuna National Poison Centre: 24 hrs advice 0800 764 766

LEIGH PLANTS

18 Old School Road

Hardy, outdoor grown

Native and exotic

Reasonable Prices

Phone

021 0233 9031

**ALLEN
ELECTRICAL
LIMITED**



Electrical, Refrigeration
and Heat Pumps
(Residential and Commercial)

Call Ray at 021 025 22294

Email r.allen@extra.co.nz

PO BOX 35,
LEIGH 0947

Community Directory

Forest & Bird Coast Care Group - a community initiative to restore reserves and bush areas through monthly weeding and planting bees - Neil Sutherland 422 6001

Leigh Badminton Club Anyone interested in re-starting this club call Dennis Humphrey 422 6625

Leigh Bowling Club - to foster fellowship and the game of bowls. New members welcome. President Biscuit McLean 027 590 4829 or Secretary Glen Walker 4226486

Leigh Business Community - meets 3rd Wednesday of month - Jan Scott 422 6681

LeighbytheseaNZ@gmail.com or www.leighbythesea.co.nz

Leigh Cards 500 - 1pm - 3.30pm Tuesday, Leigh Bowling Club, all welcome, \$3.00

Leigh Cemetery Trust -Secretary Joyce McCormick 422 6893

Leigh Church - Church Hall bookings please Phone (09) 425 8054

Leigh Community Club - meets quarterly, Anzac Day Service, Interesting speakers, council communication, care of walkways, beaches and more.

leighcommunityclub@gmail.com President Guy Parkes 021352588

Leigh Community Preschool - 422 6516 www.leighpreschool.co.nz

Leigh Girl Guides, Brownies & Pippins - Fay Bradnam 021 0279 0161

Leigh Hall - Bookings / enquiries phone Lynn Mellsopp 027 2868 625 or email leighhallauckland@gmail.com

Leigh Harbour Valley Society - 422 6880 www.leighharbourvalleysociety.org.nz

Leigh Library - 'The Cottage' opposite Leigh Store. Librarian Tracey Lawton 021 825 818 / 422 6944

Leigh Penguin Project 0211671524 or email leighpenguins@gmail.com

Leigh School - 422 6031 www.leigh.school.nz

Leigh Tennis Club - leightennisinc@gmail.com

Leigh Walking Group - meets Mondays at 9.30am for interesting walks throughout the Rodney, Kaipara and Auckland regions. Valda Paddison paddis@xtra.co.nz

Leigh Women's Bowling Club - meet Tues, Oct -April, for friendly bowls. New members very welcome. Bev Cassidy 4226599

Matheson Bay Neighbourhood Assn - Secretary Peter Spence 021 404 529 or mathesonbayassn@gmail.com

Pakiri Community Landcare Group - Frankie 021 688 997 or nick@nickmolloy.co.nz

Pakiri Tennis Club Contact Linda Taylor (Secretary) on 021 242 7459

Pest Free Leigh pestfreeleigh@gmail.com; www.facebook.com/groups/pestfreeleigh

Plunket meet 1st Monday of month Leigh Church Hall Contact Adele 0272901915

Rodney Rams Secretary Amy Weller 021 138 1407 rodneyrams@outlook.com

Tawharanui Open Sanctuary Society Inc. (TOSSI) - www.tossi.org.nz Secretary Karyn Hoksbergen 09 585 1315 email secretary@tossi.org.nz

Whangateau Acoustic Music & Social Club - www.whangateau.co.nz

Whangateau Neighbourhood Support - Sharyn Carew sharyncarew@vodafone.co.nz

Whangateau Residents & Ratepayers Assn - meets 7.30pm, 2nd Tuesday of month at Whangateau Hall. Audrey Sharp 422 6209 or Hugh McKergow 422 6219

JUSTICES OF THE PEACE & CELEBRANTS

JP - Fay Bradnam 422 6038

JP & Wedding Celebrant - Dr John Peebles 021 974 247

Celebrant - Annie Mellor www.fabulousweddingnz.com 027 929 7767

FACEBOOK

Leigh Community Club - www.facebook.com/Leighcomm/

Love Leigh - www.facebook.com/groups/LoveLeigh/

Leigh by the Sea - www.facebook.com/pages/Leighbythesea/251994924849626

Leigh Historical Photographs NZ - www.facebook.com/groups/739949979454558

If your club or group does not appear, please advise the editor.