

LEIGH RAG

October 2020

Leigh Rag is supported by the Leigh Community and compiled and edited by Helen Parkes
22 Harbour View Rd Ph 021484432
Please submit contributions **before the 15th** of each month.

Email to leighragnz@gmail.com

Please Note: The Editor of the RAG does not take any responsibility for the contents of items supplied.

Newsletter for Leigh, Matheson Bay, Whangateau, Pakiri

**Sponsored by Leigh Community Club,
Leigh Fisheries and the Leigh General Store**

View the Leigh Rag online

www.leighbythesea.co.nz/news-events

Great Daffodil Day Response for the Cancer Society

A fun Daffodil Morning Tea was held at Juliet Mantle's place in Leigh with generous donations for the Cancer Society and lots of yummy food. Due to Covid 19 the date was not the usual last Friday in August but held on October 2nd so we were lucky to be given 3 late blooming daffodils!

Over 30 plus people arrived and we had a perfect day. Many thanks to Blush, Matakana for their special prize donation and our locals Liz Jones for help with food prep and Lynn Mellsopp for her fabulous kitchen duties.

We raised over 800 dollars and members of the Leigh Bowling Club topped it up that night so we collected over \$1,000.00 this time.

Thank you to all and everyone who contributed and attended
Judee and Juliet





Leigh Business Community

The Leigh Business Community finally held their AGM on Wednesday 16th Sept after being delayed a month due to Covid. Leigh Bar provided the venue and we were able to share a meal before getting into the business side of things.

Karen Thompson-Smith from Matakana Coast Tourism provided an update on changes to the way we are promoting tourism in the region including partnering more closely with Matakana Information Centre and working with corporate sponsorship to provide funding for a part time resource role that Karen has filled. The Chair and Treasurer's reports were followed by the election of officers with Richard Scott accepting the role of Chair, Stone Meharry as Deputy Chair and Michael Chillingworth joined the committee. Great to see some younger members stepping up to lead the way forward for the next year. Thanks to Alan Macdonald for his role as Chair for the last couple of years and to Penny Garrick who stepped down from the committee. The remaining committee members are Jan Scott (Secretary) with help from Petrina Brenchley, Deen Hall (Treasurer), Judee Hall, Helen Alexander, Peter Scott, Alan Macdonald, Heather Johnson-Lee.

We all look forward to a great summer after a challenging year. Please support our local businesses and recommend them to family and friends.

In our area we have 3 camping accommodation options - Pakiri Holiday Park and Whangateau Holiday Park with tent sites, motorhome sites, cabins and motels and Leigh Central with motorhomes sites, cabins and motels. The Leigh area also has apartments, B&Bs and other accommodation. Places to eat and activities provide options for everyone. In the next Leigh Rag we will profile what activities we offer in the Leigh area or in the meantime, visit our website www.leighbythesea.co.nz to find out more.

For any information about the Leigh Business Community, please contact Jan Scott 094226681 or email LeighbytheseaNZ@gmail.com

LEIGH MOTORS 2017 LIMITED

- FULL MECHANICAL REPAIRS
- WOF & SERVICING
- TRAILER HIRE
- FUEL 24 HOURS - Self Service
- NZC -Drop off _Pick up
- BATTERIES
- GAS BOTTLE SWAP
- TYRES
- BAIT & ICE

Come and chat to our friendly team for all your mechanical requirements

Ph: 09 422 6077

EMAIL—leighmotors2017@gmail.com

RESULTS OF THE LEIGH COMMUNITY CLUB

100 RAFFLE

1st Prize \$300 #2

2nd Prize \$150 # 94

3rd Prize \$50 #56

Congratulations to Guy & Helen Parkes, Leigh Fire Station, and Ron Lee
Next draw due on October 30th, 5 pm Leigh Bowling Club.

LEIGH SUNFLOWER COMPETITION

Free seeds available at
Leigh General Store

PRIZEGIVING TO BE HELD
AT
Leigh School
1pm Sunday
31 January 2021



Your Local
Painter/Decorator
with over 25 years experience
serving all surrounding areas.

Leigh Decorators

- Painting
- Paperhanging
- Roofs
- Airless Spraying
- Stopping
- Repaints
- New Homes

For your Free Quote and/or
Consultation,

Phone Gary

Home: 09-422-6695

Mobile: 021-024-44941

Email:

leighdecorators@outlook.com

DIAL A DIGGER earthworks

- Site Works & Foundations • Drainage & Driveways
- Drilling < 600 mm • Section Clearing • 8 Tonne Tipper Available

Brian George experienced & efficient operator

021 749 594 Brian | 09 422 6267 Office
info@dialadigger.co.nz



Leigh Hall

Fantastic news. After 2 years of planning, Council contractors start much needed work on the interior of the hall; including the downstairs rooms on Monday 19th October. The hall will be fully closed for 5 to 6 weeks to enable this work to be completed. Please contact your group leader to confirm any regular class change of venue.

The outside public toilets will remain open during this refurbishment.

Note a change of date for the proposed Christmas Craft Market - now to be held on Sunday 6th December. Any interested businesses wanting to sell their goods or set up a display, please contact us to register your interest. This will also be open to community groups and local people who may wish to sell their produce, home-made craft or food items etc. There will be a cafe open, run by the hall committee to raise funds for assets and improvements for the hall. All enquiries to Lynn ph 0272868625 or email leighhallauckland@gmail.com.

The hall should be available again for use all of December, - contact us for bookings or enquiries. School holidays and Christmas will soon be here again, you may wish to utilise our lovely refreshed hall for family gatherings around this time. We're always open to offers. Enquiries to Lynn ph 0272868625 or email leighhallauckland@gmail.com.

Lynn Mellsopp

Leigh Church Services

All denominations and visitors are most welcome to join with us each

Sunday at 11 am

**There is a prayer meeting every
Sunday at 10.30 am.**

Children's Ministry enquiries

Ph: Janette 422 6204



All welcome.

LOCAL BUSINESS

wanting to promote goods & services.

Advertising space is available
from \$20 for 1 insertion or
\$80 for 10 issues

Contact the Editor
leighragnz@gmail.com

Lynn Millett RC Animal Homeopath

Natural, Effective, Safe and Affordable

As an Animal Homeopath I specialise in working with all animals who suffer from Skin Conditions, Allergies, Arthritis, Incontinence, Diabetes and Behaviour problems.

Phone: **Lynn 021 579 398** or email
lynn.millett2017@gmail.com

Home visits are available, and clinic room is located in Warkworth at
Warkworth Natural Therapies,
By appointment only. www.wnt.co.nz

COASTAL PAINTERS

Interior/Exterior

Leigh & Surrounding Areas

Call David 021 156 3461

David@coastalpainters.nz

Leigh Community Club

It takes a Community to build a track

Spring and a welcome break in Covid levels meant that the planned upgrade to weatherproof the portion of Leigh Coastal walkway between Cumberland Rd and Harbourview Rd could finally get underway. The Project was masterminded and led by our Club Vice President Steve Mantle.

First up was to secure supply of timber, gravel, posts and culvert pipes. Local suppliers ITM Matakana were very generous with great pricing for timber, boardwalk planks and hardware; Staun Popham and Ashley supplied posts for the walkway, Hynds supplied culvert piping; many thanks Bruce Peden. Downers supplied all the gravel for the walkway.

Next step build the wooden walkway over the natural water course: Frick Atkins drove the posts with his tractor mounted post driver, Steve Mantle, Deen Hall, Ross Garrick and David Shapleski cut and drilled and installed the planks for the wooden walkway with extra help by Errol Allbon.

Todd Rochford supplied his digger to cut out the track, Steve Paddison carted and stored the metal and loaded and delivered it to site when needed and provided use of plate compactor.

Finally, the metal was barrowed, raked and compacted by: Pete Hardie, Jenny Nichols, Errol Allbon, Dave Shapleski, Deen Hall, Ross Garrick, Ian Johnson-Lee, and Steve Mantle. Juliette Mantle supplied refreshments.



Many thanks to all the suppliers and volunteers. The community feedback and support has been fantastic and already the track is being well used with recent rains. There is still a final layer of stabilizing grid and gravel to be laid to fully complete the walkway which will be done once the gravel has settled.

Pest Free Launch update:

This column has been written prior to the weekend and

planning is complete for the Pest Free Launch on Saturday the 17th October 2.00pm at the Leigh Hall. It promises to be another great Leigh community event. Details are covered in the Pest Free Leigh section of the Leigh Rag



Leigh School

The end of Term 3 was all about celebrating Maori language week. The children created kowhaiwhai art, played kemu and hakinakina (games and sports) along with learning lots of new te reo words and phrases. Thank you to local artist Arapeta Ashton for teaching the tamariki how to make Kākahu (Maori Cloak) which the school will gift to Ngati Manuhuri. To conclude a week of Te Wiki o Te reo Maori, the school enjoyed a delicious hangi. Paki paki to Lili, Melissa, Matt, Theresa, Issac, Arapeta for their time and support in making it all happen. Thank you to the Leigh School PTA for funding the hangi.

Last term of 2020! Fingers crossed we get a full 10 weeks of school in as the children would not want to miss out on all the good things planned, including inter school athletics, camp and of course swimming in the pool!

Noho ora mai,

Kate

Our GOOD SORT this month is **Paul Smith**



nominated by Pest Free Leigh who wrote 'Paul kindly offered to help assemble the 200 rat boxes needed for the Pest Free Leigh launch and helped with the purchase of all material. He then came along over three weekends to help our team cut and assemble the boxes and deliver them to the Leigh Hall for Pest Free Leigh day.' Such an awesome contribution to this Community group Paul.

The Leigh Community Church have baking coming your way.



Trinity Chiropractic, 50 Golf Road,
Warkworth, 0985. Ph. 09 422 7917.

LEIGH GENERAL STORE OPEN 7 DAYS

- Groceries
- Ice Cream & Drinks
- Fresh Fruit & Vegetables
- Magazines, Postcards & Films
- Free Range Eggs
- Hardware & Seeds
- Bait & Fishing Gear
- Wine

EFTPOS AVAILABLE
Phone 09 422 6034

Waste Free Leigh

The Leigh Waste Minimisation
sewing group meets

Thursdays and Mondays

9.30 am to 11.30 am.

Come along and enjoy some
company with your own sewing
knitting or craft project.

We encourage home crafts and help
with skills to re-use, repurpose and
create items.

Meeting at 96 Frost Road

Last drive on the right
Until the Hall is available

Proper Hand Washing is still an
important and effective way to
eliminate the spread of the Covid 19 virus.
Please keep it up and stay safe.



MOWING

Sections, Large
Lawns &
Lifestyle Blocks



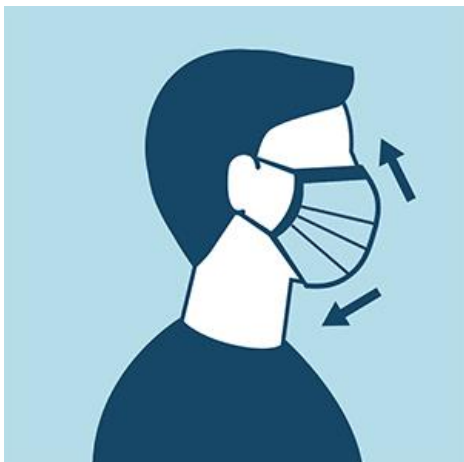
TRACTOR WORK

Post Thumping Spraying etc

CRANE TRUCK Rubbish removal

General Lifting up to 2 tonne

**Ph FRICK 0211230997 or
09 4226 223**



Local News

Leigh Ladies – Real Winners!

The Warkworth Golf Club held its annual Spring Pairs Tournament on Monday 5 October. There was a full field of 46 pairs, with representatives from clubs from Dargaville, Mangawhai, Omaha and many clubs within the Auckland region. The weather was calm and clear and the playing conditions excellent. Leigh local Helen Alexander and her playing partner Elva Travers won the day with a combined stableford score of 78. Well done Helen!

Other Leigh locals who featured in the prizes were Sue Cook and Ruth King – 15th with 71 points. They just pipped Judi Dooling and her sister Denise Craig who scored 70 points.



Pussy Power!

Now that's got your attention! Yes – we are looking for a bit of “pussy power” to give Leigh and surrounding areas a bit of a spring clean. These are two initiatives to make this happen:

PURRfection – **Pick Up Rubbish Regularly**. As you walk around, there is rubbish lying around. Cans, bottles, coffee cups and manner of discarded items litter our roadsides. Just take a minute pick it up and dispose of it responsibly. Leigh and Matheson Bay will be tidier in a flash!

PAWtential – as you enjoy walking around the coastal and other tracks, take a moment to **Pull A Weed**. Get down deep and dirty and where possible, take it out roots and all. Snuff out its future growing potential and little by little, our walkways will be ready for summer.

There are dedicated groups in Leigh who take responsibility for ensuring our walkways are in a good condition but let's not leave it just to the dedicated few. We can all take some time to make this the tidiest town on the coast.



**RODNEY
SEPTIC
TANK CLEANING**

PETER CAIRNS

Telephone: 09 422 7166

Mobile: 0274 946 370

The Knitting Truck

yarn, needles, patterns, ready made
knitwear and classes
We primarily stock N.Z. Yarn and
locally made products

**Open 6 days Weds – Mon
10-4**

Closed Tuesdays

Based at Charlies Gelato

17 Sharp Rd Matakana

021-194-5631

Letters to the editor

On October 24th at 11.00am there is to be an installation of a plaque in memory of the 3 missing sisters of the **Shakespear family**, whose graves are in the Leigh Cemetery. Judy Russell, the last surviving granddaughter (there was only the one) is coming from Dunedin, and the family of a great granddaughter (only 2 and the other is in USA) and others connected with Little Barrier island. Lyn Wade and Dick Veitch wrote the book on Hauturu (Little Barrier) where Robert senior was the first caretaker. The family lived there for 13 years. An article on them appeared in an earlier edition of Leigh Rag March 2019

Jenny Scott

This column is open for contributions published at the discretion of the editor.

Please send to leighragnz@gmail.com .

Bereaved by Suicide Peer Support Group

Starting monthly 12th November 2020

1.00pm to 3.00pm

Tea coffee and biscuits before and after meeting.

Second Thursday of every month

Venue Anglican Church Lounge

43 Percy Street Warkworth

This group is for anyone who has lost a family member or a friend to suicide.

Gold coin donation to help with room rental

Facilitated by Heather Robyn and other group members

Phone me Heather on 0276063090 or 0273677016 if you want to chat about it.

Regular events at the Leigh Hall

Monday 9.30 - 11.30pm Sewing with Waste Free Leigh (downstairs)

Monday 6 - 7pm Dancing with Spinning Sun / Ann Dewey

Tuesday 9.30 - 11am Yoga with Marion Chateau

Thursday 9:15 - 10:15am Dancing with Spinning Sun / Ann Dewey

Thursday 9.30 - 11.30pm Sewing with Waste Free Leigh (downstairs)

Friday 12 noon - 1pm Nia class (exercise to music and yoga) with Amara Labb

Please contact your class providers for locations and times while the Leigh Hall undergoes refurbishment.



Open Daily 10am – 5pm

Email enquiries@reptilepark.co.nz

ph 09 422 6021

What's Going on around here?

We include in this events that affect the community over the next couple of months. Note these may change due to Covid 19 levels
If you have an event coming up, send an email to leighragnz@gmail.com and it can be included in this monthly notification

<i>What Date</i>	<i>What is it</i>	<i>When</i>	<i>How much</i>	<i>Where</i>
Oct 24 -26 Sat Sun Mon	Mahurangi Artists Trail	All weekend		Pamphlets available from Foundation
Oct 25 Sun	Open-Day and BBQ Leigh Tennis Club	2pm	BYO drinks	Tennis Courts Albert Street
Nov 11 Wed	Book Fair and Te Wiki Ako presentations/	3pm—5pm		Leigh School invitation to visit the classrooms.
Nov 18th Wed	Leigh Business Community Meeting	7pm		Contact Jan Scott 0212042999
Dec 4th Fri	Leigh Community Club Christmas Family beach party	4pm to 6 pm		Matheson Bay
Dec 5 th Sat	Smoke on the Coast (Low n slow cooked meat comp)	7.00 am for competitors		Whangateau Holiday Park
Dec 6th Sunday	Christmas Craft Fair and Tea and Treats	10 30 am to 2.30pm	\$10 entry includes tea	Leigh Hall



Rochford Landscapes & Mini Diggers

Leigh Local

Covering all aspects of Landscape Construction

As well as our successful landscape construction and mini digger services, we are now offering a Greenscape division offering:

- Hedge and tree trimming
- Planting services
- Lawn installation
- Section clearing and waste removal
- Garden maintenance and installation
- Revegetation and wetland installation
- Lifestyle block maintenance

021 939 117
accounts@rochfordlandscapes.co.nz

David Attenborough's 10 ways to make a difference

It's up to every one of us to help preserve our planet for the future. Here are 10 simple but effective ways we can all do our bit, according to Sir David Attenborough.

RELEASE THE SPIDER

"Thank you to all those who catch and release spiders found in your home," says Attenborough. Even though it's easy to squash uninvited guests, spiders help maintain balance in the environment. Killing a spider means interrupting the natural food chain, and potentially more pests in your home as spiders love to feast on pests such as flies, moths, fleas and cockroaches.

TAKE A WALK IN THE WILD

"There is no wi-fi in the forest but I promise you will find a better connection," says Attenborough. "It seems to me that the natural world is the greatest source of excitement; the greatest source of visual beauty; and the greatest source of intellectual interest. It is the greatest source of so much in life that makes life worth living."

SAY NO TO PLASTIC

"Globally we currently produce 20,000 plastic bottles per second. Over one million per minute or 60 million per hour," says Attenborough. He describes plastic as "vile" and "horrid" but says "there's a growing awareness of the kind of damage it can do."

STOP WASTE

"Stop waste of any kind," pleads Attenborough. "Stop wasting power, stop wasting food, stop wasting plastic. Don't waste, this is a precious world."

ON YOUR BIKE

"If I can bicycle, I bicycle," says Attenborough. His favourite passion as a teen was cycling across Northern England in search of fossils. He doesn't own a car and has never passed his driving test.

REDUCE MEAT CONSUMPTION

Attenborough is not a vegetarian but he limits his consumption of red meat and seafood for the health of the planet, saying, "Above all, we have to bear one thing in mind – every single mouthful of food and every breath of air we take is dependent on a healthy planet."

DO SOMETHING

"If my grandchildren were to look at me and say, 'You were aware species were disappearing and you did nothing, you said nothing', that I think is culpable," says Attenborough. While not an activist, Attenborough has certainly educated his viewers on the wonders of nature, and also made millions aware of problems from the extinction of species to plastic pollution.

WORK FROM HOME

Sir David hopes working from home becomes permanent after the coronavirus pandemic, which could mitigate climate change. "You can work very, very well from home, and there is no need to have to endure that terrible journey [to work] packed like sardines in tins going into the middle of the city," he says.

RECONSIDER TRAVEL

"Dealing with global warming doesn't mean we have all got to suddenly stop breathing," says Attenborough. "Dealing with global warming means that we have to stop waste, and if you travel for no reason whatsoever, that is a waste."

PLANT A TREE

"Trees provide a home, shelter and food for wildlife, they also benefit us all because they have the ability to capture carbon better than any current man-made technology and of course they produce oxygen!" says Attenborough, "Planting a tree is one of the most positive actions we can all do."



LEIGH VOLUNTEER LIBRARY

Situated in The Cottage opp General Store

OPEN: Tuesday 2pm-6pm Wednesday 2pm-4pm
Thursday 11am-1pm Saturday 9am-1pm

Kia ora Leigh whanau

Now that our annual funding has come through, we've been able to stock the front shelf with some exciting new books.

We have new fiction by Robert Galbraith, Jo Nesbo, Ann Cleeves, Rose Tremain, Emma Donoghue, Ian Rankin, Jane Harper, Daniel Silva, Elena Ferrante, Graham Norton and Trent Dalton (to name a few). In the non-fiction department we have new offerings by Raynor Winn, Lotta Dann, Helen Macdonald, Eddie Jaku and Judith Collins. If you want to read one of our new books but someone has already beaten you to it, you can ask us to reserve it for you and we'll let you know when it has been returned.

A reminder that overdue books incur a \$1 a week penalty and if the library is closed, you can return books through the after-hours slot to the left of the front door.

Leigh Library book club is open to Leigh library members and is back up and running and is on the last Tuesday of the month, 7pm in the library. We talk about a book we have read and have lively discussions (not always about books!) and is a fun way to meet other locals.

Tracey

FOR ALL EMERGENCIES

DIAL 111

Fire - Ambulance - Police

Don't waste valuable time trying to find local numbers to call if you need fire, ambulance, police or assistance.

Call 111 and ask for the appropriate service.



MATAKANA GLASS

TOP GLASS SERVICE

**FAST FRIENDLY
WINDOW REPAIRS**

021 - 027 - 81204

www.matakanaglass.nz

LEIGH RAG

ADVERTISEMENT RATES

Deadline 10th of month

Standard size adverts
\$20 each or \$80 for 11 issues
(Larger ads priced as required)

Email leighragnz@gmail.com

Phone Helen Parkes Editor

LEIGH TENNIS CLUB

TENNIS FOR ALL!

Thursdays 9.30-11am

Thursdays from 5pm

Saturdays from 3pm

Leigh Tennis Club,

Albert St, Leigh

If you wish to play at the above
times, can you contact Liz Jones

Ph 021 0721 101.



In the heart of Leigh Village

*Five stylish self-contained motel units
and five boatshed cabins
all with a retro beach vibe*

Boutique Motorhome/Caravan Park

Function and Events Venue

www.leighcentral.co.nz

Phone: 09 422 6070

Mobile: 021 246 0757



Snorkel Hire Schools Information

2 Seatoun Avenue

RD5 Leigh

021 92 6212

www.theoctopushideaway.nz



LEIGH BOWLING CLUB

The Green is in fantastic condition

The Clubrooms look great with
new windows and roof.

Interested in Learning Bowls, or
having a casual game.

Roll up Saturday at 1.30 pm

Flat sole shoes required

Bowls provided

Phone 094226252 to confirm
available space

BUILDING PLANS & CONSENTS

Geoff Alexander (NDAT)

LBP # 123496

Ph. 09 422 6624

Mob. 0272 260 161

alex.g.h@xtra.co.nz



Design & Draughting Services

Resource Consents

Building Consents

Concept Design

New Builds

Alterations

Additions

MATHESON BAY NEWS

The stunning Kauri along the Kahuroa stream track have great protection now from two cleaning stations that have been installed at either end of the track by Auckland Council. A bit of beautification around them is needed, but I'm sure with a lick of black paint on the fences and some shrubs they will blend in. The Kauri in this stretch of bush are very special, especially the 'three sisters' growing together. Trapping in the area has resulted in two possums in two days this week which is great. All together around 20 have been caught in the area this year. I'm sure I'm hearing more variety of bird calls, but that could be my imagination. With a return to level 2, then 1 (hurray!) there are more people up at their holiday houses and enjoying the bay. The water is still a balmy 14 deg so what are you waiting for! I'm sure the regular winter swimmers will enjoy a rise in temperature soon too.

The Pest Free Leigh launch to be held at the Leigh Hall at 2.00pm on Saturday 17th will be a great time to come and hear about the various groups working to rid the area of flora and fauna pests. The Forest Bridge Trust will also explain the wider picture of creating a 'green corridor' and reclaiming the bush for native species between the Hauraki Gulf and Kaipara Harbour, of which P.F.L are a part of.

The Matheson Bay Association AGM is to be held on **Sunday 25th October at 2.00pm at the Leigh Church Hall (next to the Library)**. This will be followed by tea & coffee and a catch up. New committee members are needed in coming months along with people to open the gate at the beach.

Louise van Campfort

LEIGH BAR

EST 2014



QUIZ NIGHTS

\$5 per person

6.30pm

First Monday of month

Book tables at Leigh Bar

Numbers are limited

Meals available

LEIGH BAR

EST 2014

Monday Fish & chips 4-8.30pm

Tuesday Steak Night 4-8.30pm

Wednesday Burger Night 4-8.30pm

Thursday Taco 4-8.30pm

Friday \$5 special 4-7pm- till late

Saturday and Sunday 12 till late

21 Hauraki Road, Leigh
or call Richard on 021 0419 242

NZCOURIERS - LEIGH packages



Leigh Motors is the official
Drop-off & Pick-up point for
NZCourier packages.

There are only 2 Courier Companies bringing packages to Leigh
from Warkworth Mon - Fri so your packages will be either at the
Leigh General Store or Leigh Motors.

**Please people of Leigh
can you pick up your parcels promptly.**

With Christmas approaching the number of packages is significant

The Insurance Lady

Sue Cole IBANZ, PIB



Insurance Broker, Financial Adviser 28045

027 422 7668 • A/H 09 422 7668

sue@dhabrokers.co.nz



30 Years Insurance Industry
Experienced in Domestic & Commercial, Fire and General
Insurance.

Please email or phone for a quote.

**NB: Using a broker does not cost you money*

***Member Broker of PSC Connect Steadfast Group**

GARDEN BAGS

(hold approx. 1 cu.m)
FOR ALL **GREEN** WASTE

DROP OFF – PICK UP
From \$20 each

Phone **FRICK**

**021 123 0997
or 09 422 6223**

Keep Leigh Waste Free

Remember to:
**Refuse, Reduce, Reuse,
Repurpose,
Rot, Recycle and
Repair.**

PEST FREE LEIGH

Chris Floyd - 021 066 2165 -- chrisfloyd@inspire.net.nz

The push to make the township and surrounding areas pest-free moved forward with the distribution of rat traps at the launch last Saturday. Great to see so many people keen to help make this project a success and a better place for the native birds, lizards and invertebrates to thrive.

If anyone didn't manage to get to the launch, there are plenty more rat traps and boxes available. The wooden boxes for placing the traps in are to keep children and pets safe. Peanut butter is just one product that can be used for bait. Let us know via the Pest Free Leigh facebook group if you have tried other bait successfully. We also welcome photos of your catches or comments and photos of improvements you have noticed to the birdlife in our area.

To keep the project going we also need people to co-ordinate each street or area. If you would like to help please let us know. The main task will be visiting households to see if they want a free rat trap or if they already have one. As well as delivering the trap and box you would need to show how to bait and set, unset to rebait and placement of trap. It could involve helping households set their trap but also collecting catch data.

While rats are the initial focus, we know that other introduced predators such as possums, stoats and weasels are also in the area. To deal with these the project plans to have a library of other larger traps that can specifically deal with those predators. Once this part of the project is set up the traps will be available "as needed."

I'm sure trapping has increased our bird numbers around Leigh already and once there is a rat trap in every back yard we will see even more improvement.

Thanks again to all who have helped and will be helping in the future. If you would like to volunteer, need a rat trap or have any queries please email pestfreeleigh@gmail.com

EARTHPRO

M A T A K A N A L T D

TRUCKS ■ DIGGERS ■ METAL

driveways ■ house sites ■ hard landscaping ■ ponds ■ section clearing
farm drainage & race maintenance ■ commercial site preparation
drilling ■ rock breaking ■ retaining walls ■ and all other earthworks

021 557 873 ■ earthpro63@gmail.com

We cover Rodney ■ 25 years experience ■ Locally owned & operated ■ Quality & Service Guaranteed



A Forest & Bird Warkworth Area Initiative.

A Warkworth Area Forest & Bird Project

We hope that many of you were able to visit our display table at the Leigh Hall recently, as part of the Pest Free Leigh launch.

A wildlife detector dog visited Ti Point, Leigh and Goat Island coasts late September and found many more possible penguin nesting locations. Many will need further study and some surveillance using motion cameras.

The cameras continue to record penguin activity but have not recorded stoats, rats, weasels or possums indicating low numbers of these predators. Rats caught in traps at Ti Point have been chewed and cameras filmed at least one cat prowling around the area. We are not sure how this could affect the penguin population, but encourage owners to keep their cats inside at night.

The pest control programme that we have started along the coastline, will now benefit as neighbouring households add traps to their backyards. Just think how great it would be to have no rats, stoats, weasels or possums in our neighbourhood. It's not just beneficial to the wildlife but for us as well.

Photo Caption: Todd Landers (Auckland Council scientist) with Jo and her wildlife detector dog Rua searching for penguin sites.

If you have spotted a penguin please email leighpenguins@gmail.com



We also offer the following:

- ♦ Water Filters
- ♦ Pool Valet Service
- ♦ Water Testing
- ♦ Water Treatment
- ♦ Spray Equipment
- ♦ Mobile & Workshop Services

31 Woodcocks Road, Warkworth ♦ Phone 09 425 9100
E: splashwater@xtra.co.nz

Leigh Volunteer Fire Brigade

Leigh Volunteer Fire Brigade attended 13 callouts during a busy September. These were to assist public at Whangateau, a fire at Big Omaha Wharf which was out when we arrived, a small structural fire at Whangateau, false alarms at Matakana and Leigh, a rescue call to a person drowning at Matheson Bay who was found safely on shore and a vegetation fire at Pakiri which was a controlled burn. The other 6 callouts were first response medical calls to Leigh (4) and Matheson Bay (2).

Now we're back at Covid level one life gets back to normal. However Leigh brigade may still attend emergencies wearing extra personal protective gear but this is a precaution and not that the emergency is Covid related.

With our long-serving fire chief Steve Paddison stepping down and deputy chief Kevin Lawton stepping up to replace him it meant another vacancy to replace Kevin. Popular station officer and brigade training officer Nick Torkington has taken up the challenge. This augurs well for the brigade's future with the influx of younger new members taking us into the future.

If you are burning a rubbish heap, check the weather forecast for any wind changes before lighting up. The big South Island fires show how quickly a small fire can spread in a wind change and become very costly to put out.

Everyone should have checked their smoke alarms with the change to daylight saving. It's probably a good time to check street numbers haven't disappeared under the foliage too and to ensure that driveways are clear enough for a fire truck to get to your house in an emergency. Also with a medical emergency it helps us if someone is on the road outside directing us to the patient.

Tony Enderby



**GOAT ISLAND
MARINE DISCOVERY CENTRE**
THE UNIVERSITY OF AUCKLAND
NEW ZEALAND
Te Whare Wānanga o Tāmaki Makaurau



**Open
10 to 4pm
weekends, school &
public holidays**
now to 30 Nov

Open everyday
1 Dec to 30 April

09 923 3645

www.goatlandmarine.co.nz

DIGITAL PRINT CENTRE Chappell Printing Ltd

- Laser prints & copies
- Scan from prints
- Large format prints
- Large scanning
- Laminating
- Canvas prints
- Binding

Phone 0274 300 447

10 Brampton Rd Snells Beach

Email: chaprint@xtra.co.nz

Leigh General Services

Minor Building Works

Fences , Decks

Carports etc

Water-blasting - Painting

All work considered

30 yrs Building experience

Phone Bryn 0226369801

WINTER



THURSDAY

TAKEAWAY ONLY 5-8PM

FRIDAY CHEAPPIZZA

5PM - LATE

SATURDAY

12PM - LATE

SUNDAY

12PM - 7PM

09 422 6019

SAWMILLCAFE.CO.NZ

SECTION SERVICES

TREES:

pruned, reduced,
removed

HEDGES:

trimmed, reduced

Phone Dom 027 222 1223

dguzzo2000@yahoo.com



17E Totara Ave Leigh NZ 0985

Mobile 02108916855

Email: foundationleighnz@gmail.com

Find us on FB Foundation Gallery
& Arts Hub

or Instagram [Foundation_gallery_nz](https://www.instagram.com/foundation_gallery_nz)

need computer help?

We're based in Leigh, and come to you.

Special discounts for locals!

mobit.

PCs, Macs, desktops, laptops, phones, tablets
televisions, and more. Any and all of your
technology troubles solved, finally.

*For more information and pricing,
please just give us a call, or visit our website:*

09 952 4568

www.mobit.nz

Matakana Grooming Studio

Healthy Pets Naturally

Karen Person

Mb:0274377163

Ph:094227486

www.pethaven.co.nz



matakanadoggrooming@xtra.co.nz

WHANGATEAU HALL

Musical Events at Whangateau Hall

Whangateau has been full of life with music and workshops happening again, and more scheduled to come.

28 October 2020, Wednesday, Folk Club Night. First half floor singers. Guest: gypsy jazz quartet Club Manouche. \$15. Doors at 6:45, show starts at 7:00. [Email](#) to reserve a floor spot. (Note, this is not our usual club night, we will go back to the last Monday of the month in November!)

2 November 2020, Monday. Hoe down hosted by Barry and the Crumpets. Old timey fun and called dances. 7pm, \$20.

16 November 2020, Monday. The Downunder Dogs in concert. 7:30pm, \$10.

30 November 2020, Monday, Folk Club Night. First half floor singers. Guest: Diane Ponzio. \$10. Doors at 6:45, show starts at 7:00. [Email](#) to reserve a floor spot.

In addition, the monthly markets are back on. Vendors, swaps, barter, and good neighbourly conversation. Markets run 9am - 1pm on the 3rd Tuesday and last Sundays of the month.

Online tickets and more information available at www.whangateau.co.nz.

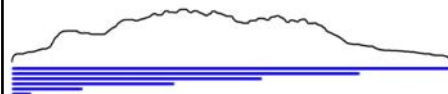
Jenine

NOMINATE A LOCAL GOOD SORT

The Leigh Community Church has run the Good Sorts column since 2013. Many fantastic locals have been the Good Sort of the month over the years but there are others out there who also deserve the award.

If you know someone like this who has not yet been nominated, please write in a few words their good deed or thoughtfulness, including their name, address and phone number and drop it into the Leigh General Store in an envelope marked "Good Sort" or email the Editor at LeighRagNZ@gmail.com.

The person considered most deserving will receive home baking courtesy of Leigh Community Church.



LEIGH ELECTRICAL LTD
RESIDENTIAL AND COMMERCIAL

JOE ROBERTS

Phone: 021 220 3717

info@leighelectrical.co.nz

42 Hauraki Rd, Leigh, 0985

GOAT ISLAND NZ

**GLASS BOTTOM
BOAT TOURS**
KAYAK & SNORKEL HIRE

Look, learn, play & explore!

See marine life, caves & reefs aboard
our 45-minute fully commented tour!

Located on the beach, Goat Island
Marine Reserve. Bookings essential.



www.glassbottomboat.co.nz info@glassbottomboat.co.nz 09 4226334/027 4979764

LJ Hooker

We have been selling Leigh for almost 30 years, love working and living here and supporting our community, and we are continually achieving great results for our clients.



For all your realstate
needs pop into our

Leigh Office

or call me on

021 490 039

☐ Marie-Dominique 021 490 039

@ mlennan.warkworth@ljh.co.nz

📞 09 425 8589

✉ 20 Cumberland St, Leigh

20 Queen St, Warkworth

🌐 warkworth.ljhooker.co.nz

📘 facebook.com/Leigh.Matakana.Properties

LJ Hooker Leigh

Broadbents 2001 Limited Licensed Agent REAA 2008

Leigh Tennis Club

Our club opening day will be on Sunday 25th October at 2 pm followed by a BBQ with BYO Drinks. If it's rained off please reserve the following Saturday 31st October at 2 pm. Come prepared to play some enjoyable social tennis and stay on for further conviviality with players and social spectators.

The courts are looking great after the working bee over the weekend. A big thanks to everyone who turned up to help. We've purchased some 2m high windbreak netting (at cost thanks to Brendon Hart of Lee and Hart Pharmacy) that we'll put up once we've braced the poles around the outside of the courts. If you can help with welding please let us know.

We usually play doubles with those who turn up, only a few games at a time, so no one waits too long on the side-line and it is always fun! We encourage all members to join our Club days (every levels welcome) which we are changing this year to :

Thursday from 5.30 pm

Saturdays from 3 pm and on

Thursday 9.30-11 am (contact Liz Jones for Thursdays on 021 0721 101)

We moved the weekend club day to Saturday afternoon hoping that we will get more of our bach owners to join us.

For membership enquiries, contact **Treasurer: Richard Gerard 027 291162**. Looking forward to seeing you all on the courts.

Shadze of Lace

Sizes 10-22

Locally designed and made clothing.

Dressmaking/Alterations/
Repairs

15 Elizabeth St,
Warkworth

Ph 09 425 0515

www.shadze.co.nz

REEL BLUE SPORTS

Fishing Tackle

For all your local fishing needs

Hooks, Braid	Flurocarbon Leaders
Game Swivels	Hapuka Rigs
Live Bait Rigs	Richter Game Lures
Innovative Lures, ESCA Hapuka Attractors	
Metal Jigs, Inchiu Jigs, Slow Jigs	

Email: reelbluesports@gmail.com

Ph 027-777-3-222

Buy on line and save
Support local business



webster|malcolm|law

**Trusted
Approachable
Experienced**

15 Neville Street, Warkworth

09 425 8037

info@webstermalcolm.co.nz
www.webstermalcolm.co.nz



Creative solutions

Health & Safety in the workplace

Advice, Site Specific Plans, Policies & Procedures
prepared for

**Tradesmen, Businesses, Farms,
Companies or sole traders.**

*Free no obligation quote, give me a call
to discuss your needs*

Wendy Stephens

PO Box 195 Leigh

027 284 9300 or 09 422 6260

Helpful Contacts

For all emergencies dial 111 and ask for police, ambulance or fire

Auckland Council 09 301 0101 toll free

Auckland Transport: public transport enquiries 0800 103 080

Healthline 0800 611 116 for 24-hour medical services

Graffiti Coordinator – Lionel Anderson 021 795 306 call or txt with location of graffiti

Lifeline Helpline Call 0800 543 354

Northlink Health enquiries for Home Help Ph 0800 425 999

North Shore Hospital Emergency Care 0800 809 342

Orca Hotline Call 0800 733 6722 to report orca sightings.

Police Non Emergency Dial 105 theft, vandalism, shoplifting, lost property, stolen cars, drugs etc. or 0800 105 105

Warkworth Police Station 09 425 8109 8am-4pm Mon - Fri

Shorecare Accident & Medical: 24/7, Sovereign House, Smales Farm

Takapuna National Poison Centre: 24 hrs advice 0800 764 766

LEIGH PLANTS

18 Old School Road

Hardy, outdoor grown

Native and exotic

Reasonable Prices

Phone

021 0233 9031

**ALLEN
ELECTRICAL
LIMITED**



Electrical, Refrigeration and Heat Pumps
(Residential and Commercial)

Call Ray at 021 025 22294

Email r.allen@xtra.co.nz

PO BOX 35,
LEIGH 0947

Community Directory

Forest & Bird Coast Care Group - a community initiative to restore reserves and bush areas through monthly weeding and planting bees - Neil Sutherland 422 6001

Leigh Badminton Club Anyone interested in re-starting this club call Dennis Humphrey 422 6625

Leigh Bowling Club - to foster fellowship and the game of bowls. New members welcome. President Biscuit McLean 027 590 4829 or Secretary Glen Walker 4226486

Leigh Business Community - meets 3rd Wednesday of month - Jan Scott 422 6681

LeighbytheseaNZ@gmail.com or www.leighbythesea.co.nz

Leigh Cards 500 - 1pm - 3.30pm Tuesday, Leigh Bowling Club, all welcome, \$3.00

Leigh Cemetery Trust -Secretary Joyce McCormick 422 6893

Leigh Church - Church Hall bookings please Phone (09) 425 8054

Leigh Community Club - meets quarterly, Anzac Day Service, Interesting speakers, council communication, care of walkways, beaches and more.

leighcommunityclub@gmail.com President Guy Parkes 021352588

Leigh Community Preschool - 422 6516 www.leighpreschool.co.nz

Leigh Girl Guides, Brownies & Pippins - Fay Bradnam 021 0279 0161

Leigh Hall - Bookings / enquiries phone Lynn Mellsopp 027 2868 625 or email leighhallauckland@gmail.com

Leigh Harbour Valley Society - 422 6880 www.leighharbourvalleysociety.org.nz

Leigh Library - 'The Cottage' opposite Leigh Store. Librarian Tracey Lawton 021 825 818 / 422 6944

Leigh Penguin Project 0211671524 or email leighpenguins@gmail.com

Leigh School - 422 6031 www.leigh.school.nz

Leigh Tennis Club - leightennisinc@gmail.com

Leigh Walking Group - meets Mondays at 9.30am for interesting walks throughout the Rodney, Kaipara and Auckland regions. Valda Paddison paddis@xtra.co.nz

Leigh Women's Bowling Club - meet Tues, Oct -April, for friendly bowls. New members very welcome. Bev Cassidy 4226599

Matheson Bay Neighbourhood Assn - Secretary Peter Spence 021 404 529 or mathesonbayassn@gmail.com

Pakiri Community Landcare Group - Frankie 021 688 997 or nick@nickmolloy.co.nz

Pakiri Tennis Club Contact Linda Taylor (Secretary) on 021 242 7459

Pest Free Leigh pestfreeleigh@gmail.com

Plunket meet 1st Monday of month Leigh Church Hall Contact Adele 0272901915

Rodney Rams Secretary Amy Weller 021 138 1407 rodneyrams@outlook.com

Tawharanui Open Sanctuary Society Inc. (TOSSI) - www.tossi.org.nz Secretary Karyn Hoksbergen 09 585 1315 email secretary@tossi.org.nz

Whangateau Acoustic Music & Social Club - www.whangateau.co.nz

Whangateau Neighbourhood Support - Sharyn Carew sharyncarew@vodafone.co.nz

Whangateau Residents & Ratepayers Assn - meets 7.30pm, 2nd Tuesday of month at Whangateau Hall. Audrey Sharp 422 6209 or Hugh McKergow 422 6219

JUSTICES OF THE PEACE & CELEBRANTS

JP - Fay Bradnam 422 6038

JP & Wedding Celebrant - Dr John Peebles 021 974 247

Celebrant - Annie Mellor www.fabulousweddingnz.com 027 929 7767

FACEBOOK

Leigh Community Club - www.facebook.com/Leighcomm/

Love Leigh - www.facebook.com/groups/LoveLeigh/

Leigh by the Sea - www.facebook.com/pages/Leighbythesea/251994924849626

Leigh Historical Photographs NZ - www.facebook.com/groups/739949979454558

If your club or group does not appear, please advise the editor.