

LEIGH RAG

September 2020

Leigh Rag is supported by the Leigh Community and compiled and edited by Helen Parkes
22 Harbour View Rd Ph 021484432
Please submit contributions **before** the 15th of each month.

Please Note: The Editor of the RAG does not take any responsibility for the contents of items supplied.

Newsletter for Leigh, Matheson Bay, Whangateau, Pakiri
Sponsored by Leigh Community Club,
Leigh Fisheries and the Leigh General Store
View the Leigh Rag online

www.leighbythesea.co.nz/news-events



Leigh Community Club

Invites residents of Leigh and Matheson Bay
to the launch of

Pest Free Leigh

at Leigh Hall

Saturday, 17 October 2-4pm

(If postponed due to Covid a new date will be advertised)

- ♦ *Learn the advantages of a pest-free community.*
- ♦ *Hear from Forest Bridge Trust experts.*
- ♦ *Free rat trap and box for residents.*

Enquiries: pestfreeleigh@gmail.com

Look for Look for Pest Free Leigh on facebook



LEIGH SCHOOL

Over the past few weeks, Te Moana (senior class) has been working on a community food stall as you might have seen. The food stall is the result of our Student Volunteer Army project. First, we had to design it and choose a name. We named it Te Kai which means the food in Māori.

Then we had to do the measurements. After, with the help of Mike and Gareth, we built it. The purpose of the stall is for everyone within our community to share locally grown produce and to donate grown and homemade produce as a way to fundraise for our school garden. We also hope to share and sell some produce from our school garden. Thank you to all the parents who helped. We appreciate it, it looks amazing and we think it is going to be a big hit. – *Proudly written by Calla and Aria.*

The younger children have been busy doing chores at home to earn cans of food to donate to Homebuilders Food Bank in Warkworth. These cans will be distributed to families in our local area. What helpful tamariki Leigh School has, as there are over 100 cans of food! Paki paki!

“The Big Buzz” and Grass Esposti from Beetopia visited Leigh School to discuss bees, plus the importance of pollinators and the impact of humans on all forms of life. The program encourages young people to make informed decisions about significant environmental issues, including the sustainability of New Zealand’s unique fauna, flora, and distinctive ecosystems, to secure a more sustainable environment for Aotearoa.

Ngā mihi nui to Leigh Eats for providing hot lunches on Friday. It has been a real hit with the children, and I am sure the parents do not mind having a day off from making lunches.

Noho ora mai, Kate

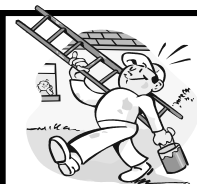


Trinity Chiropractic, 50 Golf Road,
Warkworth, 0985. Ph. 09 422 7917.

LEIGH GENERAL STORE OPEN 7 DAYS

- ▶ Groceries
- ▶ Ice Cream & Drinks
- ▶ Fresh Fruit & Vegetables
- ▶ Magazines, Postcards & Films
- ▶ Free Range Eggs
- ▶ Hardware & Seeds
- ▶ Bait & Fishing Gear
- ▶ Wine

EFTPOS AVAILABLE
Phone 09 422 6034



Your Local
Painter/Decorator
with over 25 years experience
serving all surrounding areas.

Leigh

For your Free Quote and/or
Consultation,

Phone Gary

Home: 09-422-6695

Mobile: 021-024-44941

Email:

leighdecorators@outlook.com

- Painting
- Paperhanging
- Roofs
- Airless Spraying
- Stopping
- Repaints
- New Homes

DIALADIGGER
earthworks

- Site Works & Foundations • Drainage & Driveways
- Drilling < 600 mm • Section Clearing • 8 Tonne Tipper Available

Brian George experienced & efficient operator

021 749 594 Brian | 09 422 6267 Office
info@dialadigger.co.nz



Leigh Hall

Uncertainty has hit use of the hall like every other aspect of life. However we have some wonderful community activities happening, as long as number restrictions lift in time.

- Kowhai Singers 2nd October.
- The Foundation school holiday programme 5th to 9th October
- Pest Free Leigh launch 17th October

Craft Market Day / High Tea 22nd November.

Any businesses based in or owned by residents of Leigh (Whangateau to Pakiri) or home crafters interested in an opportunity to sell their wares or promote their product can contact us Leighhallauckland@gmail.com
Please note our AGM is on hold until restrictions relax.

Note, Labour weekend has not been booked yet so the hall could be a great venue for a family and friends get-together.

Lynn ph 0272868625



Open Daily 10am – 5pm

Email enquiries@reptilepark.co.nz

ph 09 422 6021

Lynn Millett RC Animal Homeopath

Natural, Effective, Safe and Affordable

As an Animal Homeopath I specialise in working with all animals who suffer from Skin Conditions, Allergies, Arthritis, Incontinence, Diabetes and Behaviour problems.

Phone: **Lynn 021 579 398** or email
lynn.millett2017@gmail.com

Home visits are available, and clinic room is located in Warkworth at
Warkworth Natural Therapies,
By appointment only. www.wnt.co.nz

Leigh General Services

Minor Building Works

Fences, Decks

Carports etc

Water-blasting - Painting

All work considered

30 yrs building experience

Phone Bryn 0226369801

Leigh Community Club

Official Notice

Leigh Community Club is pleased to report that the club has been officially advised by the Minister of Conservation as a recipient of a 2020 DOC Community Fund / Pūtea Tautiaki Hapori

"The DOC Community Fund/Pūtea Tautiaki Hapori is designed to support practical on-the-ground projects that give our native plants and wildlife a helping hand and encourage people to get involved in conservation," said Eugenie Sage.

The funds will be allocated to support the establishment and support of the 'Pest Free Leigh' initiative a project run by local volunteers to help preserve and enrich the native bird life in the Leigh Matheson Bay area. Stage 1 will be the establishment of rat traps in the residential areas of Leigh and Matheson Bay. Fund amount \$27,000 over 3 years

The DOC Community Fund was established in 2014 to support community-led conservation projects on public and private land. Funds are directed towards practical projects aimed at conserving New Zealand's indigenous biodiversity. This includes initiatives focused on restoring natural habitats and populations of our native species. More than \$33 million has been awarded to over 600 different conservation projects in the first five DOC Community Fund funding rounds.

Club News

The current Covid-19 levels meant the Club had to postpone its 19 September community meeting and this is rescheduled for Sunday, 4 October 4.00pm at the Leigh Bowling Club. Covid-19 levels permitting.

Advice of the meeting will be emailed to members and posted on Leigh Community Club Facebook Page

Guy Parkes, Chair, Leigh Community Club, Ph: 021352588

E: leighcommunityclub@gmail.com

COASTAL PAINTERS

Interior/Exterior

Leigh & Surrounding Areas

Call David 021 156 3461

David@coastalpainters.nz

SECTION SERVICES

TREES:

pruned, reduced,
removed

HEDGES:

trimmed, reduced

Phone Dom 027 222 1223

dguzzo2000@yahoo.com



A small team have been working hard getting ready for the big launch of Pest Free Leigh on Saturday, 17 October.

Our aim is to protect our existing birdlife and make Leigh a landing point for other endangered birds spreading from Hauturu to the mainland by eliminating possums, rats and mustelids.

Come along to the Leigh Hall at 2pm for a one-hour presentation and be part of the first step - to have a rat trap in every backyard. Learn how to trap pest animals and talk to trapping experts. Pick up your free rat trap and box and become involved in making Leigh and Matheson Bay pest free.

Many thanks to the Leigh Community Club for initiating this project. Thanks also to Auckland Council, the DOC Community Fund, Matakana ITM, Leigh Builders, and the many locals who have been working on this project.

Check out our new Facebook group – Pest Free Leigh. We are keen to hear about your catches of pests, birds spotted, and other interesting posts related to pest controls.

Email: pestfreeleigh@gmail.com

Chris Floyd - 021 066 2165 -- chrisfloyd@inspire.net.nz

EARTHPRO
M A T A K A N A L T D

TRUCKS ■ DIGGERS ■ METAL

driveways ■ house sites ■ hard landscaping ■ ponds ■ section clearing
farm drainage & race maintenance ■ commercial site preparation
drilling ■ rock breaking ■ retaining walls ■ and all other earthworks

021 557 873 ■ earthpro63@gmail.com

We cover Rodney ■ 25 years experience ■ Locally owned & operated ■ Quality & Service Guaranteed

Pest Free Leigh Street Co-ordinators

We are looking for volunteers to help with our project after the launch day, to visit households who have not attended the launch, to tell them about our project and see if they would like a rat trap and box. The co-ordinators would need to supply the free Pest Free Leigh rat traps and boxes to households who want them and to demonstrate how to safely bait, set and unset traps, plus health and safety points.

Hopefully all households will be able to check their own trap on a regular basis, but help can be arranged for those who are unable to clear catches and rebait and set traps. This may be the co-ordinator, a neighbour or other local.

If you would like to help our project by being a street co-ordinator or if you have any further questions please let us know. pestfreeleigh@gmail.com



Waste Free Leigh

The Leigh Waste Minimisation
sewing group meets
Thursdays and Mondays
9.30 am to 11.30 am.

Come along and enjoy some
company with your own sewing
knitting or craft project.

We are encouraging home crafts and
helping with skills to re-use,
repurpose and create items.
Tea and Coffee available.

MOWING

Sections, Large
Lawns &
Lifestyle Blocks



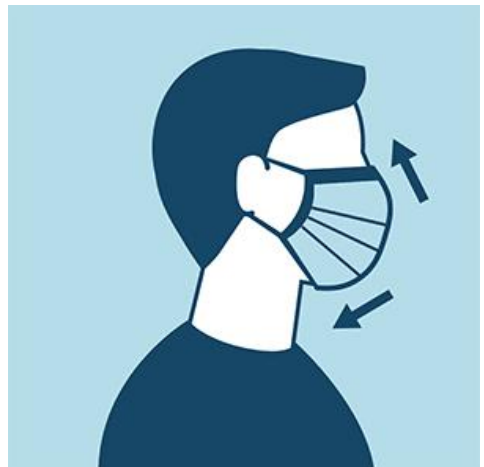
TRACTOR WORK

Post Thumping Spraying etc

CRANE TRUCK Rubbish removal

General Lifting up to 2 tonne

Ph FRICK 0211230997 or
09 4226 223



200 Rat Trap Boxes

The Leigh Community Club's Pest Free Leigh Project began as sheets of plywood and a roll of wire. The roll of wire mesh was cut into sizes to fit the front and rear of the traps and the sheets of ply cut into top, bottom and sides. From there the assembly with screws and staples gradually took place until near 200 rat boxes were complete. The Pest Free Leigh logo had been made into a stencil which was sprayed onto the boxes to complete the job.



Volunteers Ross Garrick, Paul Smith and Tony Enderby working to complete 200 rat trap boxes for the launch of Pest Free Leigh on 17 October.



The Pest Free Leigh project was made possible thanks to:

Forest Bridge Trust Matakana ITM

Leigh Builders

Kevin Lawton

Paul Smith

Leigh Community Club

Thanks also to all those who helped cut wire, move boxes around, come to our aid when the staple gun broke and lots of other small things that all contributed to get this special project off the ground to see Leigh's bird life return to something like what it once was.

RESULTS OF THE LEIGH COMMUNITY CLUB

100 RAFFLE

1st Prize \$300 Number 49

2nd Prize \$150 Number 79

3rd Prize \$50 Number 5

Congratulations to Marg Nelson, Lyndsay Best and Wendy Brown
on your wins.

Next draw due on 25 September, 5 pm Leigh Bowling Club.



TANKFULLEIGH

The "Tankfulleigh" mural project beautifying the old water tank on Totara Street has been completed. A plain white water tank has been transformed into a work of art and adds to the beautification of Leigh.

Many thanks to all who were involved with this project.

What's going on round here?

Covid-19 Level 2.5 applying in Auckland prevails until 11.59 pm on Monday 14 September. Whatever happens after that may affect some of the events listed in the September/October calendar.

<i>What date?</i>	<i>When?</i>	<i>What is it</i>	<i>How much?</i>	<i>Where?</i>
Friday 25 Sept	3.00 pm	Term 3 ends		Leigh & other Schools
Friday 2 Oct	7.30 pm	Kowhai Singers "The Rose"	\$20	Leigh Hall
All week 5-9 Oct	9.00 am	Holiday Art programme	\$50 per day	Leigh Hall
Monday 12 Oct	9.00 am	Term 4 Commences		Leigh & other Schools
Saturday 17 Oct	9.00 am	Election Day		Leigh School
Saturday 17 Oct	2.00 pm	Pest Free Leigh Launch		Leigh Hall

If you have an event coming up, send an email to leighragnz@gmail.com and it can be included in this monthly notification.



Rochford Landscapes & Mini Diggers

Leigh Local

Covering all aspects of Landscape Construction

As well as our successful landscape construction and mini digger services, we are now offering a Greenscape division offering:

- Hedge and tree trimming
- Planting services
- Lawn installation
- Section clearing and waste removal
- Garden maintenance and installation
- Revegetation and wetland installation
- Lifestyle block maintenance

021 939 117

accounts@rochfordlandscapes.co.nz

The Great Kererū Count 2020

18-27 September



Native pigeons - kererū are one of New Zealand's most valuable birds as they can swallow and disperse seeds from some of our largest trees. They can live for more than 21 years.

The Great Kererū Count is New Zealand's biggest citizen science project and helps gather information on their abundance and distribution. The kererū has also been chosen as part of the Pest Free Leigh logo. This is very fitting as kererū are preyed on by introduced predators such as possums, stoats and rats and will benefit by their removal.

You can help by counting and logging the birds you spot.

www.greatkererucount.nz

Regular Events at the Leigh Hall

Monday 9.30 - 11.30am Sewing with Waste Free Leigh (downstairs)

Monday 6 - 7pm Dancing with Spinning Sun / Ann Dewey

Tuesday 9.30 - 11.00am Yoga with Marion Chasteau

Thursday 9.15 to 10.15am Dancing with Spinning Sun / Ann Dewey

Thursday 9.30 - 11.30am Sewing with Waste Free Leigh (downstairs)

Friday 12 noon to 1pm Nia class (exercise to music and yoga) with Amara Labb



**RODNEY
SEPTIC
TANK CLEANING**

PETER CAIRNS

Telephone: 09 422 7166

Mobile: 0274 946 370

The Knitting Truck

yarn, needles, patterns, ready made
knitwear and classes

We primarily stock N.Z. Yarn and
locally made products

**Open 6 days Weds – Mon
10-4**

Closed Tuesdays

Based at Charlies Gelato

17 Sharp Rd Matakana

021-194-5631



LEIGH VOLUNTEER LIBRARY

Situated in The Cottage opp General Store

OPEN: Tuesday 2pm-6pm Wednesday 2pm-4pm
Thursday 11am-1pm Saturday 9am-1pm

Kia ora Leigh community

We're back open under Covid Level 2.5 but with a few restrictions. We ask that you wear a face covering, keep social distancing rules, only three members in the library at a time and at this stage no under 5 year olds are allowed. We also ask that you sign in on arrival, either with the Covid Tracker App or manually.

We have just received confirmation that we are getting our annual funding this year which is a great relief and we are grateful for this as we appreciate how tight money is for the council. Once this money is received, we will be able to get back in to book buying mode.

Leigh Library book club will be back on Tuesday 29 September 7pm providing we are at Level 2 or under. Looking forward to hearing what books people have been reading.

Thank you to the community for your continued support of our library. It's always great to be on duty and catch up with you all and know that you're as passionate about reading as we are.

Cheers, Tracey

FOR ALL EMERGENCIES

DIAL 111

Fire - Ambulance - Police

Don't waste valuable time trying to find local numbers to call if you need fire, ambulance, police or assistance.

Call 111 and ask for the appropriate service.



MATAKANA GLASS
TOP GLASS SERVICE

FAST FRIENDLY
WINDOW REPAIRS

021 - 027 - 81204

www.matakanaglass.nz

**LEIGH
RAG**

**ADVERTISEMENT
RATES**

Deadline 10th of month

**Standard size adverts
\$20 each or \$80 for 11 issues
(Larger ads priced as required)**

Email leighragnz@gmail.com

Phone Helen Parkes Editor
021484432

**LEIGH TENNIS CLUB
TENNIS FOR ALL!**

Thursdays 9.30-11.00 am ,

Sundays 3-5 pm

through the winter
Leigh Tennis Club,
Albert St, Leigh

If you wish to play at the above
times, can you contact Liz Jones
Ph 021 0721 101.



Protect yourself and others by
washing your hands regularly and
wearing a mask when shopping.



**Snorkel Hire
Schools
Information**

2 Seatoun Avenue
RD5 Leigh
021 92 6212

www.theoctopushideaway.nz



In the heart of Leigh Village

*Five stylish self-contained motel units
and five boatshed cabins
all with a retro beach vibe
Boutique Motorhome/Caravan Park
Function and Events Venue*

www.leighcentral.co.nz

Phone: 09 422 6070

Mobile: 021 246 0757

BUILDING PLANS & CONSENTS

Geoff Alexander (NDAT)

LBP # 123496

Ph. 09 422 6624

Mob. 0272 260 161

alex.g.h@xtra.co.nz



Design & Draughting Services

Resource Consents
Building Consents
Concept Design

New Builds
Alterations
Additions

Covid-19

Who would have thought at the start of this year that a pandemic would change our lives. Although we have had minor scares such as Swine Flu there has not been anything like Covid-19 since the Spanish Flu at the end of World War I, over 100 years ago.

Like then, some people did all they could to prevent the outbreak spreading but without the knowledge we have today their efforts were in vain and more than 9000 New Zealanders died from Spanish Flu.

Today most people followed the government's advice along scientific guidelines and virtually closed down the epidemic. Yet a section of the population chose to disbelieve science and followed an increasing number of crackpot theories promoted on social media.

These include a raft of strange theories often involving conspiracies. Many include 5G technology, 1080 poison, Bill Gates among others. One thing all these theories have in common is a lack of any scientific support.

Helpful Contacts

For all emergencies dial 111 and ask for police, ambulance or fire

Auckland Council 09 301 0101 toll free

Auckland Transport: public transport enquiries 0800 103 080

Healthline 0800 611 116 for 24-hour medical services

Graffiti Coordinator – Lionel Anderson 021 795 306 call or txt with location of graffiti

Lifeline Helpline Call 0800 543 354

Northlink Health enquiries for Home Help Ph 0800 425 999

North Shore Hospital Emergency Care 0800 809 342

Orca Hotline Call 0800 733 6722 to report orca sightings.

Police Non Emergency Dial 105 theft, vandalism, shoplifting, lost property, stolen cars, drugs etc. or 0800 105 105

Warkworth Police Station 09 425 8109 8am-4pm Mon - Fri

Shorecare Accident & Medical: 24/7, Sovereign House, Smales Farm

Takapuna National Poison Centre: 24 hrs advice 0800 764 766

LEIGH BAR

EST 2014

LEIGH BAR

EST 2014



QUIZ NIGHTS

\$5 per person

6.30pm

First Monday of month

Book tables at Leigh Bar

Numbers are limited

Meals available

Monday Fish & chips 4-8.30pm

Tuesday Steak Night 4-8.30pm

Wednesday Burger Night 4-8.30pm

Thursday Taco 4-8.30pm

Friday \$5 special 4-7pm- till late

Saturday and Sunday 12 till late

21 Hauraki Road, Leigh

or call Richard on 021 0419 242

Kowhai Singers
 present
The Rose
 and lots more beautiful songs
 At the Leigh Hall
 Friday 2 Oct 7.30 pm
 Tickets \$20 at the door
 or ph Jo Evans 422 6328



NOTICE FROM THE EDITOR

All dates and events advised in the Leigh Rag are as provided, however these may be subject to change due to Covid-19 Levels. Please accept that we only report what we have been sent at the time of publication and these things can change at short notice.

The Insurance Lady

Sue Cole IBANZ, PIB

Insurance Broker, Financial Adviser 28045

027 422 7668 • A/H 09 422 7668

sue@dhabrokers.co.nz

30 Years Insurance Industry
 Experienced in Domestic & Commercial, Fire and General Insurance.

Please email or phone for a quote.

**NB: Using a broker does not cost you money*

***Member Broker of PSC Connect Steadfast Group**



GARDEN BAGS

(hold approx. 1 cu.m)
 FOR ALL **GREEN** WASTE

DROP OFF – PICK UP
 From \$20 each

Phone **FRICK**

021 123 0997
or 09 422 6223

Keep Leigh Waste Free

Remember to:

**Refuse, Reduce, Reuse,
 Repurpose,
 Rot, Recycle and
 Repair.**



A Forest & Bird Warkworth Area Initiative

Some little blue penguins around our coastline now have large chicks almost ready to fledge. They are very vulnerable and if dogs can be kept on a leash that would be good. It only takes a second for a dog to kill a penguin.

Other penguins are busy at night making their nests or they may already have laid their eggs. We are also very pleased that some are also using some penguin nesting boxes.

To find out more take a look at our Leigh Penguin Project Facebook page.

[www.facebook.com/
LeighPenguinProject](http://www.facebook.com/LeighPenguinProject)

At the Pest Free Leigh launch to be held on 17 October at the Leigh Hall we will have a display table and hope to show some of our amazing penguin videos taken locally.

Many thanks to all the trappers and others involved in our project who are helping to make a big difference to not only little blue penguins but other birds as well.

leighpenguins@gmail.com

WINTER



THURSDAY
TAKEAWAY ONLY 5-8PM

FRIDAY CHEAP PIZZA
5PM - LATE

SATURDAY
12PM - LATE

SUNDAY
12PM - 7PM

09 422 6019
SAWMILLCAFE.CO.NZ



We also offer the following:

- ♦ Water Filters
- ♦ Pool Valet Service
- ♦ Water Testing
- ♦ Water Treatment
- ♦ Spray Equipment
- ♦ Mobile & Workshop Services

31 Woodcocks Road, Warkworth ♦ Phone 09 425 9100
E: splashwater@xtra.co.nz

FOUNDATION KIDS HOLIDAY PROGRAMME

From 5th October
Leigh Hall

The aim of the holiday programme is to give children an opportunity to investigate a range of artistic pursuits. The skills of many artists and craftspeople have been engaged to encourage and educate holidaying youngsters. Ages 6 onwards.

To book contact the Gallery (Hillary) on 021 0891 6855

foundationleighnz@gmail.com

LOCAL BUSINESSES

wanting to promote goods &
services.

This space is
available

\$80 for 10 issues

Contact the Editor
leighragnz@gmail.com



17E Totara Ave Leigh NZ 0985

Mobile 02108916855

Email: foundationleighnz@gmail.com

Find us on FB Foundation Gallery
& Arts Hub

or Instagram [Foundation_gallery_nz](https://www.instagram.com/foundation_gallery_nz)

need computer help?

We're based in Leigh, and come to you.
Special discounts for locals!

mobit.

PCs, Macs, desktops, laptops, phones, tablets
televisions, and more. Any and all of your
technology troubles solved, finally.

*For more information and pricing,
please just give us a call, or visit our website:*

09 952 4568
www.mobit.nz

Matakana Grooming Studio

Healthy Pets Naturally
Karen Person

Mb:0274377163
Ph:094227486
www.pethaven.co.nz



matakanadoggrooming@xtra.co.nz

Leigh Volunteer Fire Brigade

August saw the brigade begin to get busier again with 11 callouts. These were to a vegetation fire at Cape Rodney which was a controlled burn, storm damage to house at Leigh, false alarm at Whangateau, motor vehicle accident at Whangateau and first response medical calls to Leigh (4), Whangateau (2) and Ti Point.

The sudden onset of Covid level 3 then 2.5 changed the brigade back to extra protective emergency gear (PPE) mode. Once again we may attend emergencies with more than the usual PPE but this is a precaution and not that the emergency is Covid related.

The latest Covid outbreak has again shown our inclusion in Auckland City as a negative. We are nearly 100 kilometres from the cluster but have to act as if it is on our doorstep. Auckland Transport's changes to speed limits on country roads will also slow our response times to emergencies as we can only legally travel 15kph more than the signed speed limit. Our crews are included in Auckland for training purposes, so all our training courses are delayed yet again.

The increased callouts for August look like continuing into September so the team are getting plenty of hands on experience. Training on station will include using breathing apparatus, first aid and pumping water as the predictions are for another dry summer with the possibility of more vegetation fires.

Fire season is still open but there are still restrictions on what can be burned. These are listed on Auckland Council's website. If you are lighting a rubbish heap, check which way the wind is blowing before lighting up so you don't share the smoke with the whole town or have the fire jump into long grass or scrub.

Tony Enderby



**GOAT ISLAND
MARINE DISCOVERY CENTRE**
THE UNIVERSITY OF AUCKLAND
NEW ZEALAND
Tē Whare Wānanga o Tāmaki Makaurau



**Open
10 to 4pm
weekends, school &
public holidays**
now to 30 Nov

Open everyday
1 Dec to 30 April

09 923 3645
www.goatlandmarine.co.nz

DIGITAL PRINT CENTRE Chappell Printing Ltd

- Laser prints & copies
- Scan from prints
- Large format prints
- Large scanning
- Laminating
- Canvas prints
- Binding

Phone 0274 300 447

10 Brampton Rd Snells Beach

Email: chaprint@xtra.co.nz

www.chappellprinting.co.nz

GOOD SORT

Our GOOD SORT this month is **Steve Paddison** nominated by the Leigh Volunteer Fire Brigade who wrote.... 'Steve joined the Brigade in 1975, became Deputy Chief in 1981, then **Chief Fire Officer** in **1995** and has held that position for **25 years**. During his time Steve would have attended nearly **2000** callouts for every emergency you could imagine - besides fires, medicals and MVAs there have been oil spills, sunken boats, fallen trees, storm damage and even a plane crash. Steve has recently stepped down as Chief Fire Officer but continues to be a member and attend callouts for the Leigh Volunteer Fire Brigade.'

An amazing 45-year contribution to our Community which the *Leigh Community Church* are delighted to acknowledge. Thank you Steve.



*Steve Paddison
Chief Fire
Officer at Leigh
for 25 years.*

LEIGH MOTORS 2017 LIMITED

- FULL MECHANICAL REPAIRS
- WOF & SERVICING
- TRAILER HIRE
- FUEL 24 HOURS - Self Service
- FIREWOOD
- BATTERIES
- GAS BOTTLE SWAP
- TYRES
- BAIT & ICE

***Come and chat to our friendly team for all your
mechanical requirements***

Ph: 09 422 6077

EMAIL—leighmotors2017@gmail.com

WHANGATEAU HALL

Musical Events at Whangateau Hall

Whangateau Hall is still only available for groups of 10 or less under Covid Alert Level 2.5, so most events outside committee meetings are still on hold. This is supposedly going to change on 23 September, so we have tentatively scheduled the following events:

27 September: Community market day from 9am to 1pm

28 September: Folk Club with guests Bluegrass and Beyond, 7pm, \$10.

7 October: Concert with Jan Preston, the Queen of Boogie Woogie, in concert. 7:30pm, \$20 online, \$30 at the door.

26 October: Folk Club, guest TBD, 7pm, \$10

16 November: Concert with the Downunder Dogs, 7:30pm, \$10.

2 November: Hoe down hosted by Barry and the Crumpets. Old timey fun with called dances, not to be missed! 7pm, \$10

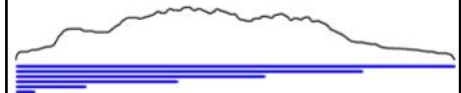
The hall is available for bookings. See www.whangateau.co.nz for more information. Subscribe to our newsletter to get the latest updates..

NOMINATE A LOCAL GOOD SORT

The Leigh Community Church has run the Good Sorts column since 2013. Many fantastic locals have been the Good Sort of the month over the years but there are others out there who also deserve the award.

If you know someone like this who has not yet been nominated, please write in a few words their good deed or thoughtfulness, including their name, address and phone number and drop it into the Leigh General Store in an envelope marked "Good Sort" or email the Editor at LeighRagNZ@gmail.com.

The person considered most deserving will receive home baking courtesy of Leigh Community Church.



LEIGH ELECTRICAL LTD

RESIDENTIAL AND COMMERCIAL

JOE ROBERTS

Phone: 021 220 3717

info@leighelectrical.co.nz

42 Hauraki Rd, Leigh, 0985

GOAT ISLAND NZ

**GLASS BOTTOM
BOAT TOURS**
KAYAK & SNORKEL HIRE

Look, learn, play & explore!

See marine life, caves & reefs aboard
our 45-minute fully commentated tour!

Located on the beach, Goat Island
Marine Reserve. Bookings essential.



www.glassbottomboat.co.nz info@glassbottomboat.co.nz 09 4226334/027 4979764

LJ Hooker

We have been selling Leigh for almost 30 years, love working and living here and supporting our community, and we are continually achieving great results for our clients.



For all your real estate
needs pop into our

Leigh Office

or call me on

021 490 039

☐ Marie-Dominique 021 490 039

@ mlennan.warkworth@ljh.co.nz

📞 09 425 8589

✉ 20 Cumberland St, Leigh

20 Queen St, Warkworth

🌐 warkworth.ljhooker.co.nz

📘 facebook.com/Leigh.Matakana.Properties

LJ Hooker Leigh

Broadbents 2001 Limited Licensed Agent REAA 2008

Leigh Tennis Club

The Leigh Tennis Club season starts on 1 October. It is time for members to renew their membership. Each current member will receive an email notice shortly.

The new committee will be meeting shortly to plan out the season. Most important will be to decide on opening day. This will be held once we return to Covid-19 Level 1 restrictions.

All locals are welcome to join for a summer of tennis and play with other members on our club days – Thursday morning and Sunday afternoons throughout the year and Thursday evening during daylight saving.

Contact Marie-Dominique Lennan Ph 021 490 039 if you wish to join the Leigh Tennis Club.

Shadze of Lace

Sizes 10-22

Locally designed and made clothing.

Dressmaking/Alterations/
Repairs

15 Elizabeth St,
Warkworth

Ph 09 425 0515

www.shadze.co.nz

REEL BLUE SPORTS

Fishing Tackle

For all your local fishing needs

Hooks, Braid	Fluorocarbon Leaders
Game Swivels	Hapuka Rigs
Live Bait Rigs	Richter Game Lures
Innovative Lures, ESCA Hapuka Attractors	
Metal Jigs, Inchiu Jigs, Slow Jigs	

Email: reelbluesports@gmail.com

Ph 027-777-3-222

Buy on line and save

Support local business

Leigh Church Services

All denominations and visitors are most welcome to join with us each

Sunday at 11 am

There is also a prayer meeting every Sunday at 10.30 am.



Children's Ministry enquiries

Ph: Janette 422 6204

All welcome.



webster|malcolm|law

**Trusted
Approachable
Experienced**

15 Neville Street, Warkworth

09 425 8037

info@webstermalcolm.co.nz
www.webstermalcolm.co.nz



Creative solutions

Health & Safety in the workplace

Advice, Site Specific Plans, Policies & Procedures
prepared for

**Tradesmen, Businesses, Farms,
Companies or sole traders.**

*Free no obligation quote, give me a call
to discuss your needs*

Wendy Stephens

PO Box 195 Leigh

027 284 9300 or 09 422 6260

Helpful Contacts

For all emergencies dial 111 and ask for police, ambulance or fire

Auckland Council 09 301 0101 toll free

Auckland Transport: public transport enquiries 0800 103 080

Healthline 0800 611 116 for 24-hour medical services

Graffiti Coordinator – Lionel Anderson 021 795 306 call or txt with location of graffiti

Lifeline Helpline Call 0800 543 354

Northlink Health enquiries for Home Help Ph 0800 425 999

North Shore Hospital Emergency Care 0800 809 342

Orca Hotline Call 0800 733 6722 to report orca sightings.

Police Non Emergency Dial 105 theft, vandalism, shoplifting, lost property, stolen cars, drugs
etc. or 0800 105 105

Warkworth Police Station 09 425 8109 8am-4pm Mon - Fri

Shorecare Accident & Medical: 24/7, Sovereign House, Smales Farm

Takapuna National Poison Centre: 24 hrs advice 0800 764 766

LEIGH PLANTS

18 Old School Road

Hardy, outdoor grown

Native and exotic

Reasonable Prices

Phone

021 0233 9031

**ALLEN
ELECTRICAL
LIMITED**



Electrical, Refrigeration and Heat Pumps
(Residential and Commercial)

Call Ray at 021 025 22294

Email r.allen@xtra.co.nz

PO BOX 35,
LEIGH 0947

Community Directory

Forest & Bird Coast Care Group - a community initiative to restore reserves and bush areas through monthly weeding and planting bees - Neil Sutherland 422 6001

Leigh Badminton Club - Anyone interested in re-starting this club call Dennis Humphrey 422 6625

Leigh Bowling Club - to foster fellowship and the game of bowls. New members welcome. President Biscuit McLean 027 590 4829 or Secretary Glen Walker 422 6486

Leigh Business Community - meets 3rd Wednesday of month - Jan Scott 422 6681
LeighbytheseaNZ@gmail.com or www.leighbythesea.co.nz

Leigh Cards 500 - 1pm - 3.30pm Tuesday, Leigh Bowling Club, all welcome, \$3.00

Leigh Cemetery Trust - Secretary Joyce McCormick 422 6893

Leigh Church - Church Hall bookings please Phone (09) 425 8054

Leigh Community Club - meets quarterly, Anzac Day Service, Interesting speakers, council communication, care of walkways, beaches and more.

leighcommunityclub@gmail.com President Guy Parkes 021352588

Leigh Community Preschool - 422 6516 www.leighpreschool.co.nz

Leigh Girl Guides, Brownies & Pippins - Fay Bradnam 021 0279 0161

Leigh Hall - Bookings / enquiries phone Lynn Mellsopp 027 2868 625 or email leighhallauckland@gmail.com

Leigh Harbour Valley Society - 422 6880 www.leighharbourvalleysociety.org.nz

Leigh Library - 'The Cottage' opposite Leigh Store. Librarian Tracey Lawton 021 825 818 / 422 6944

Leigh Penguin Project 0211671524 or email leighpenguins@gmail.com

Leigh School - 422 6031 www.leigh.school.nz

Leigh Tennis Club - leightennisinc@gmail.com

Leigh Walking Group - meets Mondays at 9.30am for interesting walks throughout the Rodney, Kaipara and Auckland regions. Valda Paddison paddis@xtra.co.nz

Leigh Women's Bowling Club - meet Tues, Oct -April, for friendly bowls. New members very welcome. Bev Cassidy 4226599

Matheson Bay Neighbourhood Assn - Secretary Peter Spence 021 404 529 or mathesonbayassn@gmail.com

Pakiri Community Landcare Group - Frankie 021 688 997 or nick@nickmolloy.co.nz

Pakiri Tennis Club Contact Linda Taylor (Secretary) on 021 242 7459

Pest Free Leigh: pestfreeleigh@gmail.com

Plunket meet 1st Monday of month Leigh Church Hall Contact Adele 0272901915

Rodney Rams Secretary Amy Weller 021 138 1407 rodneyrams@outlook.com

Tawharanui Open Sanctuary Society Inc. (TOSSI) - www.tossi.org.nz Secretary Karyn Hoksbergen 09 585 1315 email secretary@tossi.org.nz

Whangateau Acoustic Music & Social Club - www.whangateau.co.nz

Whangateau Neighbourhood Support - Sharyn Carew sharyncarew@vodafone.co.nz

Whangateau Residents & Ratepayers Assn - meets 7.30pm, 2nd Tuesday of month at Whangateau Hall. Audrey Sharp 422 6209 or Hugh McKergow 422 6219

JUSTICES OF THE PEACE & CELEBRANTS

JP - Fay Bradnam 422 6038

JP & Wedding Celebrant - Dr John Peebles 021 974 247

Celebrant - Annie Mellor www.fabulousweddingnz.com 027 929 7767

FACEBOOK

Leigh Community Club - www.facebook.com/Leighcomm

Love Leigh - www.facebook.com/groups/LoveLeigh/

Leigh by the Sea - www.facebook.com/pages/Leighbythesea

Leigh Historical Photographs NZ - www.facebook.com/groups/739949979454558

Pest Free Leigh - www.facebook.com/groups/pestfreeleigh

If your club or group does not appear, please advise the editor.