

LEIGH RAG

September 2019

Leigh Rag is supported by the Leigh Community and compiled and edited by Tony Enderby, 19 Albert St, Leigh, Ph 422 6127. Please submit contributions before the 15th of each month.

Email to

leighragnz@gmail.com

Please Note: The Editor of the RAG does not take any responsibility for the contents of items supplied.

Newsletter for Leigh, Matheson Bay, Whangateau, Pakiri

**Sponsored by Leigh Community Club,
Leigh Fisheries and the Leigh General Store**

View the Leigh Rag online

www.leighbythesea.co.nz/news-events

The Great Kererū Count 2019

20-29 September

Kererū, our native forest pigeon, are very valuable to our forests. They are the only bird in New Zealand that can swallow and disperse seeds from the largest native trees such as tawa, taraire, pūriri and matai. Kererū can live for over 21 years and are essential for native bush regeneration. Their disappearance would be a disaster for our native forests.

Take part in the great Kererū count by recording all the kereru that you see between 20-29 September.

www.greatkererucount.nz



WATCH RUGBY LIVE AT THE LEIGH BAR

TENNIS FOR ALL!

Thursdays 1pm – 3pm

Leigh Tennis Club, Albert St, Leigh

Players of all standards are welcome. Bring your racquet or we have some. Balls provided and childminding can be arranged.

Contact Liz Jones Ph 021 0721101 or just rock up!

Leigh Community Club

It feels as if we've had the typically changeable equinox weather already, so perhaps spring has come early. I have been out in the garden getting my vegetable boxes ready for the summer and put in a few rows of seeds. Coming from the UK, seeing gorgeous freesias growing wild is always exciting and such a sign of things to come!

The Leigh Community Club collects wine bottle tops and ring pulls from drink cans and passes them on to Kidney Kids via NZ Lions. The money raised from re-cycling goes to help the families of children with Kidney Disease. Drop your tops off at the bowling club or bring them to my house. Double bonus, less land-fill and raises money.

The Zero Waste sewing bees have continued through winter. The group has recently finished 65 swimming bags for Leigh School, restyled donated curtains for the hall and 30 cash aprons for Leigh School are nearly finished. Next project will be art aprons for the Leigh School and more bags for the shop ready for summer. If you'd like to join in, drop in

at the sewing room 9.30 - 11.30am Thursday morning, the small rooms on Pakiri Road, not the main hall.

For some of us at least, the next month is going to be all about rugby. If the Spark connection can't keep up and you don't want to wait an hour, the Leigh Bar will be showing the games. I'm looking forward to seeing some great rugby and let's hope the best team wins whoever they may be!

The Community Club's next meeting is on Sunday, 6 October at 4pm. See you soon.

Lucy Harris



Creative solutions

Health & Safety in the workplace

Advice, Site Specific Plans, Policies & Procedures
prepared for

**Tradesmen, Businesses, Farms,
Companies or sole traders.**

*Free no obligation quote, give me a call
to discuss your needs*

**Wendy Stephens
PO Box 195 Leigh
027 284 9300 or 09 422 6260**

LEIGH PLANTS

18 Old School Road

Hardy, outdoor grown

Native and exotic

Reasonable Prices

Phone

021 0233 9031



**ALLEN
ELECTRICAL
LIMITED**

Electrical, Refrigeration and Heat
Pumps

(Residential and Commercial)

Call Ray at 021 025 22294

Email r.allen@xtra.co.nz

PO BOX 35,
LEIGH 0947



A big thank you to all

Thank you to everyone for your comforting words and continued support after the recent sudden death of our Mum, Mavis Davies. It's great to live in a small community and be surrounded by friends at times like this.

Thank you to the Leigh Volunteer Fire Brigade for tending Mum and the excellent care from the Rosedale St John Ambulance crew. Also the North Shore Hospital for the amazing care and support received from nurses doctors and palliative care.

Rest in peace Mum. You will be in our hearts forever. We miss you so much already.

The Davies Family



Fantastic results from our great community and friends. One thousand dollars raised for the Cancer Society with lots of local help. Many thanks for those who supplied great food and a special thanks for those who got up early and picked beautiful Daffodil blooms.

Judee and Juliet

need computer help?

We're based in Leigh, and come to you.
Special discounts for locals!

mobit.

PCs, Macs, desktops, laptops, phones, tablets
televisions, and more. Any and all of your
technology troubles solved, finally.

*For more information and pricing,
please just give us a call, or visit our website:*

09 952 4568

www.mobit.nz



Your Local
Painter/Decorator
with over 25 years experience
serving all surrounding areas.

Leigh Decorators

- Painting
- Paperhanging
- Roofs
- Airless Spraying
- Stopping
- Repaints
- New Homes

*For your Free Quote and/or
Consultation,
Phone Gary
Home: 09-422-6695
Mobile: 021-024-44941
Email:
leighdecorators@outlook.com*

DIALADIGGER earthworks

- Site Works & Foundations • Drainage & Driveways
- Drilling < 600 mm • Section Clearing • 8 Tonne Tipper Available

Brian George experienced & efficient operator

021 749 594 Brian | 09 422 6267 Office
info@dialadigger.co.nz



Rodney Rams Rebuild, Right on Track

After what could only be described as a hugely successful inaugural season in 2018, the Rodney Rams Masters League team were Intent to continue the rebuilding phase of the club & keen to get stuck in again for 2019.

The ARL Northern module this season consisted of the Rodney Rams, Hibiscus Raiders, East Coast Bays Barracudas, Glenfield Greyhounds, CONZ, Northcote Tigers, Waitemata Seagulls & Glenora Bears. With each Club set to square up against one another and host one round of the season at their respective club. With each game, our Rams have once again done themselves proud & although the results did not always go in our favour... The utmost respect was shown to all opposition clubs & players to ensure the safety of those that take the field & enjoy a social afternoon and meal afterwards.

The regular season wrapped up end of August at Northcote where the Rams took on Hibiscus Coast for the annually contested "Ray Inkersole Memorial" Shield which ended in a scoreless draw. The Shield returned to Whangateau as the Rams were current holders going into the match. Upcoming on the calendar for the Rams Masters will be two Invitational matches during the off season as the team looks forward to 2020. Also with Junior Rugby League high on the agenda for next year. Rugby League in Whangateau and the Rodney Rams Rebuild looks to be right on track. The Rodney Rams Masters 2019 team followed on from the inaugural season last year hoping to successfully continue the rebuilding phase of the club. Player numbers were up and the camaraderie and spirit inspired by last year's players was evident from the outset. With a newly coined nickname 'The Ramily' ignited from being one big Rodney Rams Family the initial signs were good for another successful Masters season.

This year at the Rams club we decided to enter a netball team, it was a difficult decision to make as we are a rural club and not expecting many people interested, or even turn up to our musters.

We didn't just get one team together but were lucky enough to get three! It has been such a privilege to not only have three teams, but one being a premier grade; which is the first time the Rams have had a premier grade before. All teams did really well in this year's competition, especially considering we had some players who have never played before. The premiers reached 2nd place and other teams placed 3rd and 4th. We really enjoyed having netball in the club this year and are excited to have it up and running again next year and hopefully take it out!

If you are interested in playing netball next year, message me on Facebook: Ataahua Knight

Lynn Millett RC Animal Homeopath

Natural, Effective, Safe and Affordable

As an Animal Homeopath I specialise in working with all animals who suffer from Skin Conditions, Allergies, Arthritis, Incontinence, Diabetes and Behaviour problems.

Phone: **Lynn 021 579 398** or email
lynn.millett2017@gmail.com

Home visits are available, and clinic room is located in Warkworth at
Warkworth Natural Therapies,
By appointment only.
www.wnt.co.nz

Leigh General Services

Minor Building Works

Fences

Decks

Carports etc

Water-blasting - Painting

All work considered
30 yrs Building experience

Phone Bryn 0226369801

Discover what's under the Sea at Leigh Preschool Gala

Leigh Preschool Gala is full of surprises this year! Spend a day full of magic, bouncy castles, raffles, pre loved treasures a photo booth and lots of marine life!

Leigh Marine Laboratory, Goat island Discovery Centre, local artists and our Tamariki have come together to create a beautiful under water environment with interactive displays and a touch tank. Fun for all with live music, gourmet food and drinks.

Leigh Preschool Gala will be held on the 27 October, Labour weekend Sunday, from 10 am to 4 pm at Leigh School field. The money raised will be used to upgrade Preschool's outdoors space.

LEIGH GENERAL STORE **OPEN 7 DAYS**

- ▶ Groceries
- ▶ Ice Cream & Drinks
- ▶ Fresh Fruit & Vegetables
- ▶ Magazines, Postcards & Films
- ▶ Free Range Eggs
- ▶ Hardware & Seeds
- ▶ Bait & Fishing Gear
- ▶ Wine

EFTPOS AVAILABLE
Phone 09 422 6034

COASTAL PAINTERS

Interior/Exterior

Leigh & Surrounding Areas

Call David 021 156 3461

David@coastalpainters.nz



Snorkel Hire Schools Information

2 Seatoun Avenue
RD5 Leigh
021 92 6212

www.theoctopushideaway.nz

LEIGH COMMUNITY HALL

Isn't it nice to see the sunshine and the rise in temperature.

The water upgrade is now complete at the hall and we now have double the water storage capacity in time for summer and the upcoming galas and fiestas - the first being the Preschool Gala at Labour weekend.

Hall enquiries to Lynn
Ph 027 286 8625 or email

leighhallauckland@gmail.com

LEIGH COMMUNITY PRESCHOOL'S

Country Gala



October 27th | Labour Weekend Sunday | 10:00 am – 4:00 pm

LEIGH SCHOOL FIELD

Quick Fire Raffles | Carnival Rides | Vintage Clothing
Farmers Market | Silent Auction | Pre-Loved Treasures
Gourmet Food | Local Seafood | Live Music | Drinks



webster|malcolm|law

**Trusted
Approachable
Experienced**

15 Neville Street, Warkworth

09 425 8037

info@webstermalcolm.co.nz
www.webstermalcolm.co.nz

Remember to:

**Refuse, Reduce, Reuse
Repurpose, Rot, Recycle**



Rochford Landscapes & Mini Diggers **Leigh Local** **Covering all aspects of Landscape Construction**

As well as our successful landscape construction and mini digger services, we are now offering a Greenscape division offering:

- Hedge and tree trimming
- Planting services
- Lawn installation
- Section clearing and waste removal
- Garden maintenance and installation
- Revegetation and wetland installation
- Lifestyle block maintenance

0508 2 SCAPE 021 939 117
rochford.landscaping@gmail.com

PEST FREE LEIGH

The Leigh community is very lucky to have kaka squawking and flying overhead, native pigeons (kereru) feeding in our trees, tui just about everywhere, grey warblers (riroriro) singing their high pitched songs and little blue penguins (korora) quietly coming ashore under the cover of darkness.

Occasional bellbirds (korimako) have been seen and heard as well as the more raucous introduced kookaburra. You just have to look at our power lines to spot numerous kingfishers (kotare) sitting ready to swoop on prey.

The reason we want to reduce predators such as possums, rats, weasels and stoats is to give our amazing birdlife more protection. Did you know that a saddleback (tieke) was even heard at Whangateau recently?

While visiting the Tawharanui Regional Park, just across the bay, it is clear the difference getting rid of predators can make. The birdsong there is simply amazing and probably what it was like all around New Zealand when the first migrants arrived here.

If everyone does a little trapping it will make a big difference to our birds and also our native plants.

Jenny Enderby

GARDEN BAGS

(hold approx. 1 cu.m)
FOR ALL **GREEN** WASTE

DROP OFF – PICK UP
From \$20 each

Phone **FRICK**

021 123 0997
or 09 422 6223



RODNEY SEPTIC TANK CLEANING

PETER CAIRNS

Telephone: 09 422 7166

Mobile: 0274 946 370

The Knitting Truck

yarn, needles, patterns, ready
made knitwear and classes
We primarily stock N.Z. Yarn and
locally made products

Open 10-4
Wednesday to Sunday

Based at Charlies Gelato
17 Sharp Rd Matakana

021-194-5631



LEIGH VOLUNTEER LIBRARY

Situated in The Cottage opp General Store

OPEN: Tuesday 2pm-6pm Wednesday 2pm-4pm
Thursday 11am-1pm Saturday 9.30am-1pm

Kia Ora

Leigh Library currently has some fantastic new non-fiction titles that have recently been featured on Radio NZ.

The Salt Path by Raynor Winn is the uplifting true story of a couple who lost everything and embarked on a journey of salvation across the windswept English south west coastline.

On The Chin: A Boxing Education by Alex McClintock is the sporting memoir of an unlikely pugilist's attempt to take on Australia's amateur boxing circuit.

How To Escape From Prison by Dr Paul Wood is a gripping read about a man who sank to the depths of despair, before scaling the heights of true freedom.

SECTION SERVICES

TREES:

pruned, reduced,
Removed

HEDGES:

trimmed, reduced

Phone Dom 027 222 1223

dguzzo2000@yahoo.com

We also have the new Jamie Oliver cookbook Veg – you can see Jamie showcasing some of his new recipes on Facebook.

Leigh Library is now collecting wine screw bottle tops as a fundraiser for children who need dialysis. Please keep your wine bottle tops and drop off to the library - no judgement on the amount!

Leigh Library Book Club Tuesday, 24 September 7pm

Tracey Lawton



The Insurance Lady

Sue Cole IBANZ, PIB

Insurance Broker, Financial Adviser 28045

027 422 7668 • A/H 09 422 7668

sue@dhabrokers.co.nz

30 Years Insurance Industry
Experienced in Domestic & Commercial, Fire and General Insurance.

Please email or phone for a quote.

**NB: Using a broker does not cost you money*



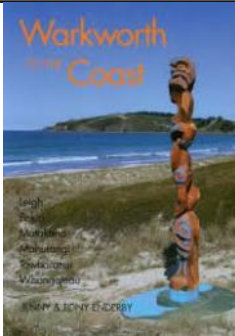
***Member Broker of PSC Connect Steadfast Group**



Leigh Community Preschool *Got stuff hanging around?*

We've started collecting clothing and garage sale items
For Leigh Community Preschool Gala
(No large or damaged goods)

Please contact Shani for pickup arrangement
Phone 021 2159603
Facebook messenger to: Shani Peleg



Local Book now at special price
\$10 cash each
Phone 021 167 1524 or 09 422 6127

MOWING Sections, Large
Lawns & Lifestyle Blocks

**TRACTOR
WORK**

Post Thumping
Spraying etc



CRANE TRUCK Rubbish removal
General Lifting up to 2 tonne

**Ph FRICK 0211230997 or
09 4226 223**



In the heart of Leigh Village
*Five stylish self-contained motel units
and five boatshed cabins
all with a retro beach vibe*
Boutique Motorhome/Caravan Park
Function and Events Venue
www.leighcentral.co.nz
Phone: 09 422 6070
Mobile: 021 246 0757

BUILDING PLANS & CONSENTS

Geoff Alexander (NDAT)
LBP # 123496
Ph. 09 422 6624
Mob. 0272 260 161
alex.g.h@xtra.co.nz



Design & Draughting Services

Resource Consents
Building Consents
Concept Design

New Builds
Alterations
Additions

MATHESON BAY NEWS

As I write this it sure looks like spring. I heard the first shining cuckoo today that has arrived from the Solomon Islands. Always a harbinger of the coming of summer along with the songs of tui, blackbirds and thrush that are serenading the longer days.

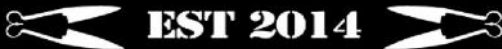
With summer on its way, it will be interesting to see if the \$8 million dollars that the government has earmarked for a 'responsible camping' website and freedom camper education makes a difference to the type and number of vans over the summer in the beach reserve. Nothing seems to have been decided by Auckland Council on freedom camping sites, so yet another season may pass before we get clarification.

A small area of the reserve near Leigh Road has had rat and possum traps along with monitoring tunnels installed. These will be checked and baited in the coming weeks and signage put up. It has been decided by the pest control groups in the area not to use poison. Several locals are also trapping privately which is great and as this project gets up and running we will look at filling any gaps in the Matheson Bay pest control plan, with more trapping on private land. The goal is to control pests from Ti Point to Goat Island so that bird life making it over from Little Barrier and breeding penguins can become established. The Matheson Bay group are teaming up with those from Ti Point and Leigh to this end.

Louise van Campfort

WATCH RUGBY LIVE AT THE LEIGH BAR

LEIGH BAR



QUIZ NIGHTS

\$5 per person

6.30pm

First Monday of month

Book tables at Leigh Bar

Numbers are limited

Meals available

LEIGH BAR



Monday 4-8.30pm

Tuesday **Burger Night** 4-8.30pm **\$10**

Wednesday **Steak Night** 4-8.30pm **\$15**

Thursday Closed

\$5 special Friday 4-7pm—Open to late

Saturday and Sunday 12 to late

21 Hauraki Road, Leigh
or call Richard on 021 0419 242

The logo for Mike Pero Real Estate, featuring the name 'mike Pero' in a white, handwritten-style font on a black rectangular background.

Mike Pero Real Estate Licensed REAA (2008)



Proudly supporting *you* and your *community*

Supporting: Mahurangi College, Warkworth Town Hall Restoration, Warkworth/Wellsford Hospice, Matakana School, Omaha Golf Club, Rodney Rams League Club, Mike Pero Foundation, Point Wells — Christmas Letterbox Competition, Community Centre, Croquet Club, Fete and Library.

Angela Wain

Mike Pero Matakana Coast

P: 0274 936 800 or 0800 MATAKANA | Angela.Wain@mikepero.com



@mikeperomatakanacoast



Leigh School

The whole school went on the bus to the Auckland Art Gallery to extend their learning around portraits and storytelling through visual arts. The visit was very much enjoyed by all who attended!

"We went on the bus and we saw lots of really cool paintings and we went in the disco and we dressed up and it was really fun and there were dresses of yellow and red

and pink. The dresses were really cool and we took turns being the leader and we would follow the leader. Then we had lunch and we went toilet and then we went back on the bus." By Hanna age 5

The hockey season has come to an end and the teams celebrated their hard work and dedication last Wednesday at the Sawmill Cafe. A special thank you to Poppy and Calla Shears' Grandma who lives in America for shouting pizza and chips to all the players. Thanks also to Wax and Rach of Leigh Eats for their very generous Legend Award(s), which Wax presented to Poppy Shears, Kalani Murray and Tui Browne. And to top off the season, three of our Year 5 senior players (Gigi Browne, Poppy and Kalani) have gone on to be selected for the North Harbour Primary Rep Squad! Well done to everyone involved and thanks for a fun season.

Thank you to Neil Sutherland and Sheryl Corbett of Kyle St for donating native plants for the school garden and their time to help Nick and I plant them. Thank you to Mark and Paola for the mulch. Much appreciated by all!

The Yummy Apple sticker collection has come to an end. I have counted and posted them and we will certainly be eligible for some great new sports gear – Thanks to the many apple eaters in Leigh!

Get out your calendars . . . The Leigh School PTA is hosting a *community get-together* to celebrate the Spring Equinox on Friday, 27, September, the last day of the term. They will be selling hot food & sweet treats and will have a wonderful raffle up for grabs. Mark the date in your calendar and keep an eye out for more information!

Kate Shears

EARTHPRO

M A T A K A N A L T D

TRUCKS ■ DIGGERS ■ METAL

driveways ■ house sites ■ hard landscaping ■ ponds ■ section clearing
farm drainage & race maintenance ■ commercial site preparation
drilling ■ rock breaking ■ retaining walls ■ and all other earthworks

021 557 873 ■ earthpro63@gmail.com

We cover Rodney ■ 25 years experience ■ Locally owned & operated ■ Quality & Service Guaranteed

Whangateau

On this month we have our Folk Club Night on Monday, 30 September, hosted by Krissy Jackson. Krissy is also the 2nd half guest performer. Krissy is one of the finest fiddlers in New Zealand, playing with multiple bands in a wide variety of genres. She will be joined by musical guests Adam Ogle, Anna Percy and Peter Jackson. Doors open at 6:45pm for a 7pm kick off. Floor singers in the first half, you can e-mail Krissy to request a spot or sign up at the door: fiddlernz@gmail.com. \$10.

We have a trio of fine shows for you in October. On Wednesday 9th is the Trio Jackson from Nelson. \$20 at the door, 7:30pm. Then on Monday 14th we have the new progressive bluegrass super-group You, Me, Everybody headed up by the phenomenal Rhodes brothers, Laurence and Sam, and expertly supported by Nat Torkington (The Pipi Pickers) on banjo, James Gelluck (Frank Burkitt Band) on bass, and Kim Bonnington on vocals and guitar. 7:30pm, tickets available through www.whangateau.co.nz and at the door.

Finishing the month with a bang, we have the incomparable Missy Raines Trio.

From her tenure playing with The Claire Lynch Band, Eddie Adcock, Josh Graves, Jim Hurst, Kenny Baker, and Jesse McReynolds to her 7 International Bluegrass Music Association Bass Player of the Year awards, Missy Raines has proven herself without doubt as an iconic bluegrass instrumentalist. Her new Trio spotlights her sultry alto voice and impressive songwriting talents. \$20+fees, tickets are available through Eventfinda and at the door (\$25). Wednesday, 30 October 7:30pm.

We will not have a regular club night in October. We might have two in November to make up for it.

Jenine



We also offer the following:

- ♦ Water Filters
- ♦ Pool Valet Service
- ♦ Water Testing
- ♦ Water Treatment
- ♦ Spray Equipment
- ♦ Mobile & Workshop Services

31 Woodcocks Road, Warkworth ♦ Phone 09 425 9100
E: splashwater@xtra.co.nz

Leigh Volunteer Fire Brigade

I mentioned last month about the inconsistency of our callouts. We actually went for almost a month with no callouts to the middle of August, then attended 11 callouts in the last two weeks of the month.

The callouts were to a child locked in car at Pakiri, a false alarm at Leigh, set up a helicopter landing zone at Leigh, and a vegetation fire at Takatu. The others were all medical calls to Leigh (3), Ti Point (3) and Whangateau. Our long wet winter continues but it's been warm and the result is that there has been plenty of plant and tree growth. From a fire brigade point of view this will cause us problems as street numbers are obscured by growth and branches overhang and block emergency vehicles getting up driveways.

When the sun comes out, have a look at your street number and the overhanging trees over your driveway. The easy one is clearing the street number but if long hanging trees are a bit low you may have to call one of the garden experts that advertise in the Leigh Rag to help clear them. If we

can't get a fire truck up your driveway we might lose vital minutes in getting to you to help in an emergency.

Daylight saving happens shortly and it is a good time to check smoke alarms. These gadgets have saved many lives and every home should have one. If you think yours isn't working, contact one of the brigade members.

We welcome our newest member, Ewen MacGeorge to the brigade. Our numbers are now stronger than they have been for many years which is a benefit to all of us. *Tony Enderby*

LEIGH RAG

**ADVERTISEMENT
RATES**
**Deadline 10th of
month**

Standard size adverts
\$20 each or \$80 for 11 issues
(Larger ads priced as required)

Email leighragnz@gmail.com

or phone Tony on 09 422 6127
or 021 167 1524



**GOAT ISLAND
MARINE DISCOVERY CENTRE**
THE UNIVERSITY OF AUCKLAND
NEW ZEALAND
Tū Whare Wānanga o Tāmaki Makaurau



**Open
10 to 4pm
weekends, school &
public holidays**
now to 30 Nov

Open everyday
1 Dec to 30 April

09 923 3645
www.goatlandmarine.co.nz

DIGITAL PRINT CENTRE Chappell Printing Ltd

- Laser prints & copies
- Scan from prints
- Large format prints
- Large scanning
- Laminating
- Canvas prints
- Binding

Phone 09 425 9394

11a Clegg Place, Warkworth

Email: chaprint@xtra.co.nz
www.chappellprinting.co.nz

Leigh Penguins

At this time of year little penguins could be laying eggs or raising their young. They will be occupying burrows and going out each morning to feed at sea, returning at dusk. Their chicks are very vulnerable at this stage.

There are many ways you can help these little birds.



Photo taken at Goat Island by
Jenny Enderby

- ♦ Be a responsible pet owners – ie keep your dog on a lead.
- ♦ Help with predator controls.
- ♦ Lobby against set-netting.
- ♦ Help reduce marine pollution.

People are still reporting seeing a lot of penguins in Omaha Bay and around Goat Island where they feed during the day, but we are still not sure where they come ashore at night.

If you have seen or heard penguins locally, please contact us.

Email: Leighpenguins@gmail.com

Many thanks Jenny Enderby

Ask an expert about all your travel needs:

- | | |
|--------------------|------------|
| ✓ Accommodation | ✓ Car Hire |
| ✓ Holiday Packages | ✓ Flights |
| ✓ Travel Insurance | ✓ Tours |
| | ✓ Cruises |

FLIGHT CENTRE®

The Airfare Experts

LOWEST AIRFARE GUARANTEE
We will beat available airfare quotes for flights departing from New Zealand or you fly free.*
Conditions apply*



Flight Centre Warkworth | 54 Queen Street
Call 09 422 3302 | 0800 292 759
warkworth@flightcentre.co.nz

▼ For full terms & conditions see flightcentre.co.nz/lowestairfareguarantee

0931130038



GOOD SORTS

Our GOOD SORT this month is **Chrissy Forsyth** from Matheson Bay, nominated by Peter who wrote.... "I've spotted Chrissy out with her grabber stick picking up litter from the roadsides in the streets around our village. So I spoke to her about this and although she moved here fairly recently, she has taken on this onerous task on a regular basis. In the past three weeks she has completed a good section of Pakiri Road." It is not a pleasant job and there are a number of locals who we all know, who regularly pick up the litter on our streets but it's always impressive when a new person takes this on. Many thanks Chrissy, we really appreciate your efforts and community spirit. The *Leigh Community Church* are delighted to bake for you.

Sunflowers

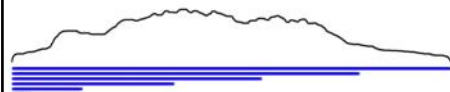
Now that the weather is warming it's a good time to plant sunflowers. Lots of sunflower seeds have been given out over the past months so get out there and plant them. Watch for next month's Leigh Rag for details on the great Leigh Sunflower Competition.

NOMINATE A LOCAL GOOD SORT

Our Good Sorts column has run for a number of years, sponsored by Leigh Community Church. Many fantastic locals have been the Good Sort of the month over the years but there are others out there who also deserve the award.

If you know someone like this who has not yet been nominated, please write in a few words their good deed or thoughtfulness, including their name, address and phone number and drop it into the Leigh General Store in an envelope marked "Good Sort" or email the Editor at LeighRagNZ@gmail.com.

The person considered most deserving will receive home baking courtesy of Leigh Community Church.



LEIGH ELECTRICAL LTD

RESIDENTIAL AND COMMERCIAL

JOE ROBERTS

Phone: 021 220 3717

info@leighelectrical.co.nz

42 Hauraki Rd, Leigh, 0985

GOAT ISLAND NZ

GLASS BOTTOM BOAT TOURS

KAYAK & SNORKEL HIRE

Look, learn, play & explore!

See marine life, caves & reefs aboard
our 45-minute fully commentated tour!

Located on the beach, Goat Island
Marine Reserve. Bookings essential.



www.glassbottomboat.co.nz info@glassbottomboat.co.nz 09 4226334/027 4979764

LJ Hooker

We have been selling Leigh for almost 30 years, love working and living here and supporting our community, and we are continually achieving great results for our clients.



For all your real estate
needs pop into our

Leigh Office

or call me on

021 490 039

☐ Marie-Dominique 021 490 039

@ mlennan.warkworth@ljh.co.nz

📞 09 425 8589

✉ 20 Cumberland St, Leigh

20 Queen St, Warkworth

🌐 warkworth.ljhooker.co.nz

📘 facebook.com/Leigh.Matakana.Properties

LJ Hooker Leigh

Broadbents 2001 Limited Licensed Agent REAA 2008



Leigh Business Community

We had our AGM and elected our new committee for this coming business year. All committee members have accepted to continue on and we welcome **Penny Garrick** in joining us this year. Whangateau Holiday Park manager, Petrina Brenchley may join us if her position becomes permanent so we look forward to these new faces, new ideas!

The people below are the committee members so please feel free to talk to any of them if interested in becoming a member or wanting any information about this business group.

Alan Macdonald, Heather Johnson-Lee, Peter Scott, Richard Scott, Jan Scott, Helen Alexander, John Gardiner, Deen Hall and Judee Hall.

We thank all for their commitment and voluntary time enabling Leigh to have its own business community - a great feat for such a small community.

We look forward to the approaching summer with many activities, weddings, events and visitors staying at our accommodation providers. Working together with the community and as a team is what LBC is all about.

Two violins and classical guitar

Trio Jackson

JAZZ GYPSY LATIN CLASSICAL

Whangateau Hall

Wed 9 October 7.30

Tickets \$20 at the door
or from Jo Evans 422 6328

We would like to increase the numbers of **Trade Services** on our website this year. We can all then refer locals and visitors to the **Leigh by the Sea Website** or contact details and information on many different services available in our area.

For any further assistance or information, please contact Jan Scott 094226681 or email LeighbytheseaNZ@gmail.com

Jan Scott. Secretary

Shadze of Lace

Sizes 10-22

Locally designed and made
Clothing.

Dressmaking/Alterations/
repairs

15 Elizabeth St,
Warkworth

Ph 09 425 0515

www.shadze.co.nz

REEL BLUE SPORTS

Fishing Tackle

For all your local fishing needs

Hooks, Braid Fluorocarbon Leaders
Game Swivels Hapuka Rigs
Live Bait Rigs Richter Game Lures
Innovative Lures, ESCA Hapuka Attractors
Metal Jigs, Inchiu Jigs, Slow Jigs

Email: stephen@reelbluesports.co.nz

www.reelbluesports.co.nz

Ph 027-777-3-222

Buy on line and save

Support local business

Forest and Bird COAST CARE GROUP, Leigh

As soon as the ground dries a bit we'll think of a working bee. Meantime, could everyone look out for some focus pest plants and remove them if you find them.

A pretty little fine leafed iris type plant with small blue flowers up the stems has recently appeared at my place. I see clusters of it appearing around the village, and as it is a new pest in Leigh we need to get rid of it. Dig them out and put them in your council rubbish bag, or deep bury them.

Another pest is beautiful jasmine, prominent in bushy parts of the village at the moment. It is a wiry vine which absolutely smothers and kills native plants, and is easily found because of its pungent smell and pretty white to pink flowers. It can be removed by pulling out the runners and roots. Alternatively cutting it off at ground level won't kill it but will at least stop it flowering and dispersing.

It would be great to have everyone's help with removing these two pests, and then we can sit back and wait for summer!

Neil Sutherland.

FOR ALL EMERGENCIES

DIAL 111

Fire - Ambulance - Police

Don't waste valuable time trying to find local numbers to call if you need fire, ambulance, police or assistance.

Call 111 and ask for the appropriate service.



Leigh Church Services

All denominations and visitors are most welcome to join with us each

Sunday at 11 am

There is also a prayer meeting every Sunday at 10.30 am.

Church Hall bookings please

Phone (09) 425 8054

All welcome

LEIGH MOTORS 2017 LIMITED

- WOF
- SERVICING
- REPAIRS
- FUEL 24 Hour-Self Service
- BATTERIES
- GAS BOTTLE SWAP
- TYRES
- BAIT & ICE

Come and chat to our friendly team for all your mechanical requirements

Ph: 09 422 6077

EMAIL—leighmotors2017@gmail.com

Community Directory

Forest & Bird Community Coast Care Group – a community initiative to restore Leigh's reserves and bush areas, monthly weeding, planting bees Neil Sutherland 09 422 6001

Graffiti Coordinator – Lionel Anderson 021 795 306 call or txt with location of graffiti

Leigh Bowling Club - to foster fellowship and the game of bowls. New members welcome. President Biscuit McLean 027 590 4829 or sec. Glen Walker 09 422 6486

Leigh Business Community - meets 3rd Wednesday of month Jan Scott 09 422 6681

www.leighbythesea.co.nz or email LeighbytheseaNZ@gmail.com

Leigh Cards 500 - 1pm - 3.30pm Tuesday, Leigh Bowling Club, all welcome, \$3.00

Leigh Cemetery Trust -Secretary Joyce McCormick 09 422 6893

Leigh Church - Church Hall bookings please Phone (09) 425 8054

Leigh Community Club - meets 4pm, 1st Sunday of month at Leigh Bowling Club.

Organises Anzac Day Service and Community Matters. New members welcome.

President Lucy Harris 021 202 8932

Leigh Community Preschool - 09 422 6516 www.leighpreschool.co.nz

Leigh Girl Guides, Brownies & Pippins - Fay Bradnam 021 0279 0161

Leigh Hall - Bookings / enquiries phone Lynn Mellsopp 027 2868 625 or email

leighhallauckland@gmail.com

Leigh Harbour Valley Society - 09 422 6880 www.leighharbourvalleysociety.org.nz

Leigh Historic Group currently being formed email historyleighbnz@gmail.com

Leigh Library – 'The Cottage' opposite Leigh General Store. Librarian Tracey Lawton 021 825 818 / 09 422 6944 Library Hours as follows:

Open Sat: 9.30-1pm; Tues: 2pm-6pm; Wed: 2pm-4pm; Thurs: 11am-1pm

Leigh School – 09 422 6031 www.leigh.school.nz

Leigh Tennis Club – enquiries at Leigh Eats or Marie Dominique 021 490 039

Leigh Walking Group - meets Mondays at 9.30am for interesting walks throughout the Rodney, Kaipara and Auckland regions. Hugh McKergow 09 422 6219

Leigh Women's Bowling Club - meet Tues, Oct-April, for friendly bowls. New members very welcome. Olive Gravatt 09 422 6273 or Wendy Brooks 09 422 7963

Matheson Bay Neighbourhood Assn - Secretary Peter Spence 021 404 529 or

mathesonbayassn@gmail.com

Pakiri Community Landcare Group - Frankie 021 688 997 or nick@nickmolloy.co.nz

Pakiri Tennis Club Contact Linda Taylor (Secretary) on 021 242 7459

Plunket meet 1st Monday of month Leigh Church Hall Contact Adele 0272901915

Rodney Rams Secretary Amy Weller 021 138 1407 rodneyrms@outlook.com

Tawharanui Open Sanctuary Society Inc. (TOSSI) - www.tossi.org.nz Secretary

Karyn Hoksbergen 09 585 1315 email secretary@tossi.org.nz

Whangateau Acoustic Music & Social Club - www.whangateau.co.nz

Whangateau Neighbourhood Support – Sharyn Carew sharyncarew@vodafone.co.nz

Whangateau Residents & Ratepayers Assn meets 7.30pm, 2nd Tuesday of month at Whangateau Hall. Audrey Sharp 09 422 6209 or Hugh McKergow 09 422 6219

JUSTICES OF THE PEACE & CELEBRANTS

JP - Fay Bradnam 09 422 6038

JP & Wedding Celebrant - Dr John Peebles 021 974 247

JP & Funeral Celebrant - Barrie Mason 021 683 747

Celebrant Annie Mellor www.fabulousweddingnz.com Ph 027 9297767

FACEBOOK

Love Leigh - www.facebook.com/groups/LoveLeigh/

Leigh by the Sea - www.facebook.com/pages/Leighbythesea/251994924849626

Leigh Historical Photographs NZ - www.facebook.com/groups/739949979454558

TOSSI www.facebook.com/tossi.nz/

If your club or group does not appear, please advise the editor.