

LEIGH RAG

December 2018

Leigh Rag is supported by the Leigh Community and compiled and edited by Tony Enderby, 19 Albert St, Leigh, Ph 422 6127. Please submit contributions before the 15th of each month. **Leave copy in the box at the Leigh General Store or email to leighragnz@gmail.com**

Please Note: The Editor of the RAG does not take any responsibility for the contents of items supplied.

**Newsletter for Leigh, Matheson Bay, Whangateau, Pakiri
Sponsored by Leigh & Districts Ex Services and Community Club,
Leigh Fisheries and the Leigh General Store**

View the Leigh Rag online

www.leighbythesea.co.nz/news-events

Merry Christmas from the Leigh Rag

Many thanks to all contributors and advertisers of the Rag.

Special thanks also to Helen Parkes for helping to put the Rag together and Liz Jones for looking after the accounts on behalf of the Leigh Community Club.

The Leigh Rag is totally non-profit and put together by volunteers and your support is appreciated.



Please note next issue will be February 2019. Have safe and happy holidays.

*Tony & Jenny
Enderby*



**SAT 9TH FEB
10-5 PM
LEIGH SCHOOL**

**LIVE MUSIC | MARKET STALLS
SEAFOOD RAFFLES | KID FUN**

Leigh Community Club

The pohutakawa are looking beautiful this year, we have some really magnificent trees in town.

The community club spends a lot of time on working in the background, contacting council and other groups in the area, applying for grants and fund raising and this has continued throughout 2018. We organised the Anzac Day service which was held in the cemetery and well attended and then another short ceremony on Armistice Day to mark that occasion. We were part of the organising group which put on the Mid Winter Dance at Leigh Central, an excellent social occasion for those who were lucky enough to get a ticket. We are talking to other groups about possible improvements around the shop / library area. Two additional harbour walkway signposts have also been put in.

The Beach Christmas Party was a lovely occasion with young and old joining in. Thanks to the Sawmill Cafe for the pizzas for the older members and to the fire brigade for the fire truck mainly enjoyed by the younger ones.

The final working bee of 2018 has been held to open up the track to Kowhai Reserve, overlooking Leigh Harbour. It has taken a huge effort by a large group of people to reach a conclusion. It involved negotiating between Auckland Council for parks and Auckland Transport plus obtaining permission to clear the paper road. The grass is now dropped so the council maintenance crew can access it to enable regular mowing. Walk along Harbour View to Kowhai Terrace to find the reserve, we hope locals and visitors enjoy this lovely spot. Thanks to Frick for the bags.

Helen Parkes has been the main instigator for our other new project which is the 4 R's. We are delighted to say that we have been successful in our grant application to run Waste Minimisation projects. This work has been launched by members sewing re-usable bags which are available at the shop. More ideas to follow soon. Earlier this year, we decided that the club name would change or at least be shortened, so the Leigh and Districts Ex-Services and Community Club has become the Leigh Community Club. We continue to do what we have done in the past plus more liaison work with council and applying for grants.

On behalf of the committee I'd like to wish everyone a happy and restful holiday.
See you at the beach.

Lucy Harris

The Knitting Truck

yarn, needles, patterns, ready
made knitwear and classes
We primarily stock N.Z. Yarn and
locally made products

**Open 10-4
Wednesday to Sunday**

Based at Charlies Gelato
17 Sharp Rd Matakana

021-194-5631

Leigh Waterblasting Services

House Washing
Driveways
Slippery Steps
and Pathways etc

Phone Bryn on 0226369801



Above Kowhai Tce access before and right after working bee.



Penguins at Ti Point

If you are keen to help the Ti Point little blue penguin population please contact us. As part of our project, penguin boxes will be placed alongside the Ti Point Track.

Early in 2019 predator trapping will begin in the area and we are looking for volunteers to help. A workshop on trapping will be set up for participants. Ideally volunteers should live in the vicinity or regularly visit the area.

We would also like to know if anyone spots any penguins coming ashore.

Please email leighpenguins@gmail.com

Phone 09 4226127 or text 0211671524. Thanks.

Forest & Bird Warkworth Area
Little Blue Penguin / Korora Project

EARTHPRO

THE EARTHWORKS PROFESSIONALS

■ WE SPECIALISE IN ■

driveways • house sites • hard landscaping • ponds
farm drainage & race maintenance • section clearing
commercial site preparation • drilling • rock breaking
and all other earthworks

TRUCKS • DIGGERS • METAL SUPPLIES

We cover the Rodney area and offer 25 years experience
Locally owned & operated • Quality & Service Guaranteed

Contact: Mark Logan
021 557 873
earthpro63@gmail.com

RODNEY AUTO TRIM

Specialists in
Auto & Marine Upholstery

- ◆ Marine Hoods, Covers, Squabs
- ◆ Truck and Tractor seats
- ◆ Car hood linings, seats, carpets
- ◆ Motorbike seats
- ◆ Balcony Screens, clear and mesh

Alan Hodge

Ph 09 422 6822 Mob 022 675 1046

12 Penguin Street, Leigh
Email: rodneyautotrim@gmail.com

December and January *One Hundred Years ago*

The influenza epidemic had continued but in this district there had been no cases. Although people had still visited others' homes and gardens, all meetings, church services and entertainments had been cancelled, an action that *"had prevented the chance of catching it."* By the end of the school term all had returned to normal.

The pupils of Leigh School put on a concert consisting of songs, recitations and athletic exercises, all arranged by the school teacher, Mrs Knowles. The concert ended with a tableaux of "Britannia." The children of Pakiri School attended. Swings and playground equipment for the school would be purchased with the money raised.

The tennis court was tarred and sanded ready for the start of competitions in January.

The Clarke family had *"a good Xmas dinner lamb, green peas, new potatoes and plum pudding"* after his son and Charlie Gravatt had cut the Danthonia in the Church grounds and shared the seeds between them.

Church services had resumed. On New Year's Day a boys' choir from Auckland had performed at the Church. The Annual Picnic was held at the Domain (Whangateau) in very fine weather with a large crowd attending. Many had come by car or lorry - up to thirty were parked on the road. The horse and buggy, however, was still the usual way of getting about, the trip to Warkworth taking 2^{1/2} hours.

Charles Clarke's Diaries, December 1918 and January 1919. Rodney and Otamatea Times, Waitemata and Kaipara Gazette, 31 December 1918

Sheryl Corbett

DIALADIGGER

earthworks

- Site Works & Foundations • Drainage & Driveways
- Drilling < 600 mm • Section Clearing • 8 Tonne Tipper Available

Brian George experienced & efficient operator

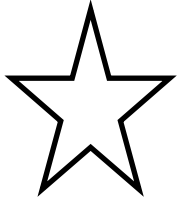
021 749 594 Brian | 09 422 6267 Office
info@dialadigger.co.nz




Shadze of Lace

sizes 10-22
or made to measure
Phone 09 425 0515
Note new address:
15 Elizabeth St, Warkworth
Also ALTERATIONS - REPAIRS
Hems, Zips, Dressmaking
www.shadze.co.nz

GOOD SORTS



This month our GOOD SORT is **Sheryl Corbett** who for the past four years has written the history piece for the Leigh Rag - **Leigh 100 Years ago**. These fascinating glimpses into our Leigh History have covered the period of the 100 year anniversary of the 1914-18 war. As Lucy our nominator wrote.... "Sheryl has put in a great deal of time and effort to make it interesting and accurate, so I'd like to thank her." The *Leigh Community Church* are pleased to be able to thank Sheryl for her hours of research on this project with some home-baking.





Top of the Town
CHIROPRACTIC

Dr Gerald Turnbull
REGISTERED CHIROPRACTOR
Suite 1 1/1 Elizabeth St, Warkworth

021 0870 4718
www.topchiropractic.co.nz

HOURS
Mon & Tue 9.30—2.30
Thurs 2.00—6.00

Hours by Appointment
Walk-ins welcome during clinic hours





Your Local
Painter/Decorator
with over 25 years experience
serving all surrounding areas.

Leigh Decorators

- Painting
- Paperhanging
- Roofs
- Airless Spraying
- Stopping
- Repaints
- New Homes

For your Free Quote and/or
Consultation,
Phone Gary
Home: 09-422-6695
Mobile: 021-024-44941
Email:
leighdecorators@outlook.com

DIGITAL PRINT CENTRE
Chappell Printing Ltd

- Laser prints & copies
- Scan from prints
- Large format prints
- Large scanning
- Laminating
- Canvas prints
- Binding

Phone 09 425 9394
11a Clegg Place, Warkworth
Email: chaprint@xtra.co.nz
www.chappellprinting.co.nz



**GOAT ISLAND
MARINE DISCOVERY CENTRE**
THE UNIVERSITY OF AUCKLAND
NEW ZEALAND
Tā Whare Winanga o Tāmaki Makaurau



**Open
10 to 4pm
weekends, school &
public holidays
now to 30 Nov**

Open everyday
1 Dec to 30 April

09 923 3645
www.goatlandmarine.co.nz

Leigh Community Club Family Christmas Party

Held at Matheson Bay reserve on 7 December it was a real success with fun and games for the children and a visit from Santa, arriving on the fire truck. The organising committee and members who put the event together thank the families of Leigh for getting behind this event and making it a fun family night. Fourteen left over prizes were donated to Home Builders SFS, who were very appreciative of them



Great News, Leigh Community Club have been successful in their application to the Auckland Council Waste Minimisation Fund. We are delighted to announce that we will be offering workshops of ways to reduce, repurpose, re-use and recycle items in the bid to become a minimal waste community. We have kick started this with a small group of volunteers who have been meeting to sew reusable bags, available at the Leigh General store for a gold coin donation. All bags are made from land fill rescued materials. Check them out when you drop in to the store. In 2019 we will be holding several workshop for you to become involved and produce your own bags or to upcycle/repurpose items. To become involved in this project please contact Helen Parkes email: helenp708@gmail.com

COASTAL PAINTERS

Interior/Exterior

Leigh & Surrounding Areas

Call David 021 156 3461

David@coastalpainters.nz

Repairs & Maintenance

CAM

Mob: 021 048 4117

or Mob: 027 237 8216

Email: kgbon47@gmail.com

**Specialising in Aluminium
& Wooden Joinery**

Leigh Historic Stories Wanted

The Leigh Rag is looking for anecdotes, stories and memories of early Leigh and its people and welcome contributions (up to about 200 words) from the Leigh, Matheson Bay, Pakiri, Ti Point and Whangateau areas.

Do you have a little story, historic photographs or memories to share?

It could be about an event, a person, or stories of when you were young. Any photographs to go with a story would be good too but are not necessary. Email us your story or idea or drop it off at the Leigh General Store.

Many thanks, Leigh Rag.

LEIGH RAG

ADVERTISEMENT RATES

Deadline 10th of month

Standard size adverts

\$20 each or \$80 for 11 issues

(Larger ads priced as required)

Email leighragnz@gmail.com

phone Tony on 09 422 6127
or 021 167 1524

NOMINATE A LOCAL GOOD SORT

Our Good Sorts column has run for a number of years, sponsored by Leigh Community Church. Many fantastic locals have been the Good Sort of the month over the years but there are others out there who also deserve the award.

If you know someone like this who has not yet been nominated, please write in a few words their good deed or thoughtfulness, including their name, address and phone number and drop it into the Leigh General Store in an envelope marked "Good Sort" or email the Editor at enderbys@xtra.co.nz.

*The person considered most deserving
will receive home baking courtesy of
Leigh Community Church.*

REEL BLUE SPORTS

Fishing Tackle

For all your local fishing needs

Hooks, Braid	Fluorocarbon Leaders
Game Swivels	Hapuka Rigs
Live Bait Rigs	Richter Game Lures
Innovative Lures, ESCA Hapuka Attractors	
Metal Jigs, Inchiu Jigs, Slow Jigs	

Email: stephen@reelbluesports.co.nz

[www: reelbluesports.co.nz](http://www.reelbluesports.co.nz)

Ph 027-777-3-222

Buy on line and save
Support local business



Rochford Landscapes & Mini Diggers

Leigh Local

Covering all aspects of Landscape Construction

As well as our successful landscape construction and mini digger services, we are now offering a Greenscape division offering:

- Hedge and tree trimming
- Planting services
- Lawn installation
- Section clearing and waste removal
- Garden maintenance and installation
- Revegetation and wetland installation
- Lifestyle block maintenance

0508 2 SCAPE 021 939 117
rochford.landscaping@gmail.com



Leigh Business Community

Christmas is upon us and the busy season has commenced.

Our final breakup for the year was on 12 December at Matheson Bay and thank you to Helen and Geoff Alexander for organising this and Leigh Central for the back up if weather was against us. This was enjoyed by all those who attended and perfect weather.

This week we also organised a Leigh Clean Up so again, thanks to those who came and to the community who assisted us. There were at least 15 people helping with the clean up but unfortunately the photo was after most had left. It was wonderful to see a lot less rubbish than previous years.

We have now commenced our new **Trade Services Section** on the Leigh by the Sea Website and it is looking good. This means we can now go online as a first port of call and support our locals.

Dial A Digger - Brian George; Geokincern Ltd - Dr Helen Williams; Leigh Electrical - Joe Roberts; Thrive Living - Megan Brown; have joined and Van Killern Pest Control Ltd - Jesse Van Kekem is pursuing this as I write! I thank all of these people for supporting us and do encourage you to use their services and refer other locals, holiday home owners and visitors to do this too.

Thank you to all members this year for all your support, to all the committee for their hard work and wish everyone a wonderful Christmas and safe and happy New Year.



For any further Trade Service enquiries, or any information about LBC contact secretary Jan Scott

leighbytheseaNZ@gmail.com

Ph 094226681

www.leighbythesea.co.nz

**AWNINGS | BALUSTRADES | GATES
SHOWERS | WARDROBES
SECURITY & INSECT SCREENS**

Free Measure & Quote

**Free phone
0800 466 374**

*Visit our website
www.homeplus.co.nz*



HOMEPLUS RODNEY

16-18 Morrison Drive
Warkworth

Ph 09 425 7053



**Snorkel Hire
Schools
Information**

2 Seatoun Avenue
RD5 Leigh
021 92 6212

www.theoctopushideaway.nz



LEIGH VOLUNTEER LIBRARY

Situated in The Cottage opp General Store

OPEN:

Tuesday 2pm-6pm

Wednesday 2pm-4pm

Thursday 11am-1pm

Saturday 9.30am-1pm

Kia Ora

Congratulations to the winners of our Christmas raffle.

First prize: Bernard Dooling

Second prize: Ron Dyer

Third prize: Pam Cundy

Fourth prize: Pete Goxan

We had a lovely community luncheon on Friday, 14 December and thank you to everyone who came and shared a fabulous spread with us.

We have more new books to help you relax over the Christmas holiday period.

We have two new picture books for the littlies: Oh No! Look What The Cat Dragged In and The Bomb.

For the adults we have books by Lesley Pearce, Kate Morton, Hiro Arikaway and a novel called The Kingfisher Secret by Anonymous – a political thriller that recently had an excellent review on RNZ National.

My favourite this month has to be the new cookbook MindFood: Celebrating 10 Years Of Recipes.

Hope we see you over the holidays and on behalf of the committee and volunteers at Leigh Library I wish you Meri Kirihimete me te Hape Nu Ia.

Tracey Lawton



The Insurance Lady

Sue Cole IBANZ, PIB

Insurance Broker, Financial Adviser 28045

027 422 7668 • A/H 09 422 7668

sue@dhabrokers.co.nz

30 Years Insurance Industry
Experienced in Domestic & Commercial, Fire and General Insurance.

Please email or phone for a quote.

**NB: Using a broker does not cost you money*



***Member Broker of PSC Connect Steadfast Group**

LEIGH HALL

Did you know that the hall is quite cheap to hire? And that there is a small room with a kitchenette downstairs?

Our small but enthusiastic committee would love to hear community ideas for use of the hall. What groups, clubs or classes would you like to see being offered?

This year the hall has been used quite a bit, but we think there is potential to cater for an even wider interest group.

Enquiries and suggestions to: leighhallauckland@gmail.com

Booking officer Lynn ph 0272868625 or chat to any committee member.

We hope you have a Merry Christmas with some good family and friend celebration time together, maybe around the bbq or on a picnic rug at the beach. Keep safe, keep well and be happy in 2019.

Leigh Hall Advisory Committee

LEIGH PLANTS

18 Old School Road

Hardy, outdoor grown

Native and exotic

Reasonable Prices

Phone

021 0233 9031

ART OPEN DAY

**LOCAL ARTIST
MARY JORDAN**

Drop by and bring a friend

64 Grand View Road, Matheson Bay

Saturday 5 and 6 January
10am to 4pm



In the heart of Leigh Village

*Five stylish self-contained motel units with a
retro beach vibe*

*Motorhome/Caravan Park
Function and Events Centre*

www.leighcentral.co.nz

Phone: 09 422 6070

Mobile: 021 246 0757

BUILDING PLANS & CONSENTS

Geoff Alexander (NDAT)

LBP # 123496

Ph. 09 422 6624

Mob. 0272 260 161

alex.g.h@xtra.co.nz



Design & Draughting Services

**Resource Consents
Building Consents
Concept Design**

**New Builds
Alterations
Additions**

MATHESON BAY NEWS

The beach is looking great with lots of sand piled up, steps are accessible, pohutakawa blooming and the water is now 20deg. There has recently been a problem with jet skis taking off from the bay, which is not a boating beach. The police were called and came very quickly and sorted it. Warkworth police are now there 24/7 with an increase of 10 more police. The council were also contacted and are looking at new signage to stress the no boating/jet skiing in Matheson Bay. So with added police presence, do call them if there is anything going down that is illegal or a disturbance to the peace as they are there to help. Auckland Council have just released a report on freedom camping. It is 700 pages long and all the areas that were part of the trial two years ago (including Matheson Bay) are included. If you'd like a little light reading over the holidays go to www.aucklandcouncil.govt.nz/have-your-say/topics you can have your say on/freedom-camping Or you may prefer to visit the Art Display by **Mary Jordan** (a local bach artist) who has donated many lovely paintings for fund raising for the Matheson Bay Association. The art will be shown at the bach at **64 Grand View**



Rd. Matheson Bay on Sat 5th and Sun 6th Jan 10 am to 4pm. Mobile 021 2396558. Mary will be exhibiting a variety of her most recent work including watercolours, prints and abstracts. Everyone welcome.

A get together for Matheson Bay residents will be held at Glen Dalton's, 65 Grandview Rd. on 27 December at 9.30am. Bring your own breakfast & bubbles etc. A great chance to meet the locals.

Above: Completed steps on Waterfall track.

Louise van Campfort

LEIGH BAR



EST 2014

NEXT QUIZ NIGHT

First Monday of February (4th)

6.30pm Quiz starts

\$5 per person

Book tables at Leigh Bar

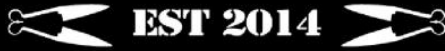
Numbers are limited

Meals available

\$200 worth of prizes



LEIGH BAR



EST 2014

SUMMER HOURS

from December 26th

OPEN 7 DAYS

MIDDAY TO LATE

21 Hauraki Road, Leigh
or call Richard on 021 0419 242



LEIGH SCHOOL

Congratulations to all the students of Leigh School for an outstanding year! You worked hard and it paid off. Thank you to the teachers and staff of Leigh School for making 2018 great. The students and their families appreciate everything you do for them. We are extremely lucky to have such caring and clever

teachers to guide our children into the future.

Pool keys are available to purchase from the school office. \$60 for Leigh School families, \$90 for non-Leigh School families.

You can contact Fay on 422-6038. Enjoy a much deserved summer holiday!

See you back at school on 4 February 2019.

Kate Shears

FAMILY OWNED & OPERATED
BUSINESS IN SNELLS BEACH

**SG
FABRICATION
& WELDING**

Tig/mig/aluminium/stainless
steel/titanium/custom
made/repairs/marine/residential

CONTACT SAM FOR A QUOTE TODAY!
021 083 72955
sgfabricationandwelding@gmail.com



LEIGH GENERAL STORE OPEN 7 DAYS

- ▶ Groceries
- ▶ Ice Cream & Drinks
- ▶ Fresh Fruit & Vegetables
- ▶ Magazines, Postcards & Films
- ▶ Free Range Eggs
- ▶ Hardware & Seeds
- ▶ Bait & Fishing Gear
- ▶ Wine

EFTPOS AVAILABLE
Phone 09 422 6034



webster|malcolm|law

**Trusted
Approachable
Experienced**

15 Neville Street, Warkworth
09 425 8037

info@webstermalcolm.co.nz
www.webstermalcolm.co.nz

GARDEN BAGS

(hold approx. 1 cu.m)
FOR ALL **GREEN** WASTE

DROP OFF – PICK UP
From \$20 each

Phone **FRICK**

**021 123 0997
or 09 422 6223**

Thanks from Melissa Crockett-Joyoue

I just wanted to write and say an immense thank you to the whole of the Leigh Community on behalf of myself and my whanau. As many of you know, I suffered from a rare cardiac event on the morning of 15 November and it's likely that only the quick actions of our Leigh Fire First Response crew arriving within minutes and giving me aspirin saved my life. Since then I've spent a month in hospital with two further lights and siren trips to Auckland ICU from North Shore Hospital, due to 2 further cardiac events/arrests and now have undergone major open heart double bypass surgery.

We've also had the added worry of our wee baby girl Hine who is highly allergic to dairy and eggs, needing to be fed allergy friendly donor breastmilk that is being collected and couriered from all over the country. While I have been in hospital Leigh has utterly rallied around my family and I can't thank you all enough.

From the First Response team to Marie-Luise Goeritz who set up the incredible Meal Train that has been helping immeasurably, and now a Give-a-little campaign to help with courier costs, all the rides to Auckland, and the incredible local mamas who have donated milk and breast pumps etc.

Arohanui ki a koutou. I should be home soon!

Melissa Crockett-Joyoue



RODNEY SEPTIC TANK CLEANING

PETER CAIRNS

Telephone: 09 422 7166

Mobile: 0274 946 370



We also offer the following:

- ♦ Water Filters
- ♦ Pool Valet Service
- ♦ Water Testing
- ♦ Water Treatment
- ♦ Spray Equipment
- ♦ Mobile & Workshop Services

31 Woodcocks Road, Warkworth ♦ Phone 09 425 9100
E: splashwater@xtra.co.nz

LJ Hooker

We have been selling Leigh for almost 30 years, love working and living here and supporting our community, and we are continually achieving great results for our clients.



For all your realstate
needs pop into our

Leigh Office

or call me on

021 490 039

☐ Marie-Dominique 021 490 039

@ mlennan.warkworth@ljh.co.nz

📞 09 425 8589

✉ 20 Cumberland St, Leigh

20 Queen St, Warkworth

🌐 warkworth.ljhooker.co.nz

📘 facebook.com/Leigh.Matakana.Properties

LJ Hooker Leigh

Broadbents 2001 Limited Licensed Agent REAA 2008

WHANGATEAU HALL FOLK CLUB

Club Nights \$10

26 December 2018, Wednesday. Boxing Day Club Party. Leftovers Potluck. Open Mic acoustic music. 6pm. Gold Coin donation.

16 January 2019, Wednesday. Rhode Works in Concert. Prodigy bluegrass band from the Waikato, the Rhodes boys have only become more stunningly talented than they were a year ago! 7:30pm. \$10.

28 January 2019, Monday. Lonely Heart String Band! Back from the USA! Note that we will not have a regular club night this month to make room for this outstanding band. 7:00pm, \$25.

Buy tickets and get information on more upcoming shows as well as how to book the hall and history of the Whangateau area all at www.whangateau.co.nz.



LEIGH ELECTRICAL LTD
RESIDENTIAL AND COMMERCIAL

JOE ROBERTS
Phone: 021 220 3717
info@leighelectrical.co.nz
42 Hauraki Rd, Leigh, 0985

SECTION SERVICES

TREES:

pruned, reduced,
Removed

HEDGES:

trimmed, reduced

Phone Dom 027 222 1223

dguzzo2000@yahoo.com

GOAT ISLAND NZ

**GLASS BOTTOM
BOAT TOURS**
KAYAK & SNORKEL HIRE

Look, learn, play & explore!

See marine life, caves & reefs aboard
our 45-minute fully commentated tour!
Located on the beach, Goat Island
Marine Reserve. Bookings essential.



www.glassbottomboat.co.nz info@glassbottomboat.co.nz 09 4226334/027 4979764

Leigh Volunteer Fire Brigade

Merry Christmas and an enjoyable New Year to everyone and a special thanks to all those who have supported the brigade over the past year.

The number of calls Leigh brigade attended returned to around normal during November with 12 callouts. These were a call to smoke showing at Omaha, a large vegetation fire threatening a house at Pakiri which involved multiple brigades and a helicopter monsoon bucket, the other being an ATM machine smoking at Matakana. Medical calls were to Leigh (6), Whangateau, Goat Island and Cape Rodney.

Our list of brigade members' awards at Leigh's Honours Night listed last month missed one important member, our canteen manager Carol Davies who was awarded a silver bar for 17 years service.

Remember if you are on the road and you see an emergency vehicle coming up with flashing lights and siren blaring, to indicate and pull over, to allow it to pass. If you come across an incident where fire and other emergency personnel are on the road, please slow down and stop if needed. Travel at 20kph or less when passing the scene.

Although brigade members will not be training over the holiday season we will be available as usual for any emergency in the local area during that time. Stay safe and have a happy Christmas and New Year.

Tony Enderby

LEIGH VOLUNTEER FIRE BRIGADE 50 YEARS BOOK

This 50-year celebration book giving the history of Leigh Volunteer Fire Brigade makes a great Christmas present. The 100 page book includes many colour photographs and is 20cm x 28cm. The cost of each book is \$25.

See any of the brigade members to get a copy.

MOWING Sections, Large
Lawns & Lifestyle Blocks

**TRACTOR
WORK**

Post Thumping
Spraying etc



CRANE TRUCK Rubbish removal
General Lifting up to 2 tonne

**Ph FRICK 0211230997 or
09 4226 223**



Creative solutions

Health & Safety in the workplace

Advice, Site Specific Plans, Policies & Procedures
prepared for

**Tradesmen, Businesses, Farms,
Companies or sole traders.**

*Free no obligation quote, give me a call
to discuss your needs*

**Wendy Stephens
PO Box 195 Leigh
027 284 9300 or 09 422 6260**

The logo for Mike Pero Real Estate, featuring the name 'mike Pero' in a white, handwritten-style script font on a black rectangular background.

Mike Pero Real Estate Licensed REAA (2008)



Proudly supporting *you* and your *community*

Supporting: Mahurangi College, Warkworth Town Hall Restoration, Warkworth/Wellsford Hospice, Matakana School, Omaha Golf Club, Rodney Rams League Club, Mike Pero Foundation, Point Wells — Christmas Letterbox Competition, Community Centre, Croquet Club, Fete and Library.

Angela Wain

Mike Pero Matakana Coast

P: 0274 936 800 or 0800 MATAKANA | Angela.Wain@mikepero.com



@mikeperomatakanacoast



Leigh Church Services

Christmas Day Service 9.30am

All denominations and visitors are most welcome to join with us each
Sunday at 11 am

There is also a prayer meeting every Sunday at 10.30 am.

There will be no church service on Sunday 23 December
Church Hall bookings please

phone 09 4258054

All welcome

FOR ALL EMERGENCIES

DIAL 111

Fire - Ambulance - Police

Don't waste valuable time trying
to find local numbers to call if
you need fire, ambulance,
police or assistance.

**Call 111 and ask for the
appropriate service.**

need computer help?

We come to you!

mobit.

PCs, Macs, desktops, laptops, phones, tablets
televisions, and more. Any and all of your
technology troubles solved, finally.

*For more information and pricing,
please just give us a call, or visit our website:*

09 952 4568

www.mobit.nz

**Ask an expert about all your
travel needs:**

- | | |
|--------------------|------------|
| ✓ Accommodation | ✓ Car Hire |
| ✓ Holiday Packages | ✓ Flights |
| ✓ Travel Insurance | ✓ Tours |
| | ✓ Cruises |

FLIGHT CENTRE®

The Airfare Experts

**LOWEST AIRFARE
GUARANTEE**
We will beat available airfare quotes
for flights departing from
New Zealand or you fly free.*
Conditions apply*



Flight Centre Warkworth | 54 Queen Street
Call 09 422 3302 | 0800 292 759
warkworth@flightcentre.co.nz

For full terms & conditions see flightcentre.co.nz/lowestairfareguarantee

Helpful Contacts

***For all emergencies dial 111
and ask for police, ambulance or fire***

Auckland Council

Dogs, pollution, rubbish etc call 09 301 0101 toll free or to report something that is causing an immediate risk to the safety of a person, people or property.

Auckland Transport: public transport enquiries 0800 103 080

General roading and street light queries 09 355 3553

Harbourmaster: maritime safety, moorings, harbour emergencies Call 09 362 039

Coastguard

Call *500 for on-water assistance or for marine emergencies dial 111 / VHF Channel 16

Department of Conservation (DoC)

Call their hotline 0800 362 468 (marine reserve offences, marine mammal strandings, sick or injured wildlife, etc.)

Healthline

Call 0800 611 116 for 24-hour medical services

Lifeline Helpline

Call 0800 543 354 or text HELP (4357) for free, 24/7, confidential support – 24 hours a day, 7 days a week. Whatever the issue, they are there to listen.

Ministry for Primary Industries (MPI)

Call 0800 80 99 66 to report fisheries offences.

Northlink Health enquiries for Home Help Ph 0800 425 999

North Shore Hospital Emergency Care

24 hours 7 days Shakespeare Rd, Takapuna 0800 809 342

Orca Hotline

Call 0800 733 6722 to report orca sightings.

Police - urgent but not life-threatening incidents

Call *555 (minor crashes, non-injury, continuous poor driving, traffic congestion, breakdowns and obstructions on the highway.)

Warkworth Police Station 09 425 8109 8am-4pm Mon - Fri

Shorecare Accident & Medical: 24/7, Sovereign House, Smales Farm

Takapuna National Poison Centre: 24 hrs advice 0800 764 766

LEIGH MOTORS 2017 LIMITED

- | | |
|-----------------------------|-------------------|
| ● WOF | ● BATTERIES |
| ● SERVICING | ● GAS BOTTLE SWAP |
| ● REPAIRS | ● TYRES |
| ● FUEL 24 Hour-Self Service | ● BAIT & ICE |

***Come and chat to our friendly team for all your
mechanical requirements***

Ph: 09 422 6077

EMAIL—leighmotors2017@gmail.com

Community Directory

Forest & Bird Community Coast Care Group – a community initiative to restore Leigh's reserves and bush areas, monthly weeding, planting bees Neil Sutherland 09 422 6001

Graffiti Coordinator – Lionel Anderson 021 795 306 call or txt with location of graffiti

Leigh & Districts Ex Services & Community Club - meets 4pm, 1st Sunday of month at Leigh Bowling Club. Anzac Day Service and Community Matters. New members welcome. President Lucy Harris 021 202 8932

Leigh Badminton Club – anyone interested in re-starting this club please call Dennis Humphrey 09 422 6625

Leigh Bowling Club - to foster fellowship and the game of bowls. New members welcome. President Biscuit McLean 027 590 4829 or sec. Dave Johnson 09 422 6560

Leigh Business Community - meets 3rd Wednesday of month Jan Scott 09 422 6681
www.leighbythesea.co.nz or email LeighbytheseaNZ@gmail.com

Leigh Cards 500 - 1pm - 3.30pm Tuesday, Leigh Bowling Club, all welcome, \$3.00

Leigh Cemetery Trust - Secretary Joyce McCormick 09 422 6893

Leigh Community Preschool - 09 422 6516 www.leighpreschool.co.nz

Leigh Girl Guides, Brownies & Pippins - Fay Bradnam 021 0279 0161

Leigh Hall - Bookings / enquiries phone Lynn Mellsopp 027 2868 625 or email leighhallauckland@gmail.com

Leigh Harbour Valley Society - 09 422 6880 www.leighharbourvalleysociety.org.nz

Leigh Historic Group currently being formed email historyleighnz@gmail.com

Leigh Library – 'The Cottage' opposite Leigh General Store. Librarian Tracey Lawton 021 825 818 / 09 422 6944 Library Hours as follows:

Open Sat: 9.30-1pm; Tues: 2pm-6pm; Wed: 2pm-4pm; Thurs: 11am-1pm

Leigh School – 09 422 6031 www.leigh.school.nz

Leigh Tennis Club – enquiries at Leigh Eats or Marie Dominique 021 490 039

Leigh Walking Group - meets Mondays at 9.30am for interesting walks throughout the Rodney, Kaipara and Auckland regions. Hugh McKergow 09 422 6219

Leigh Women's Bowling Club - meet Tues, Oct-April, for friendly bowls. New members very welcome. Olive Gravatt 09 422 6273 or Wendy Brooks 09 422 7963

Matheson Bay Neighbourhood Assn - Secretary Peter Spence 021 404 529 or mathesonbayassn@gmail.com

Pakiri Community Landcare Group - Frankie 021 688 997 or nick@nickmolloy.co.nz

Pakiri Tennis Club Contact Linda Taylor (Secretary) on 021 242 7459

Rodney Rams Secretary Amy Weller 021 138 1407 rodneyrams@outlook.com

Tawharanui Open Sanctuary Society Inc. (TOSSI) - www.tossi.org.nz Secretary Karyn Hoksbergen 09 585 1315 email secretary@tossi.org.nz

Whangateau Acoustic Music & Social Club - www.whangateau.co.nz

Whangateau Neighbourhood Support – Sharyn Carew sharyncarew@vodafone.co.nz

Whangateau Residents & Ratepayers Assn meets 7.30pm, 2nd Tuesday of month at Whangateau Hall. Audrey Sharp 09 422 6209 or Hugh McKergow 09 422 6219

JUSTICES OF THE PEACE & CELEBRANTS

JP - Fay Bradnam 09 422 6038

JP & Wedding Celebrant - Dr John Peebles 021 974 247

JP & Funeral Celebrant - Barrie Mason 021 683 747

Celebrant Annie Mellor www.fabulousweddingnz.com Ph 027 9297767

FACEBOOK

Love Leigh - www.facebook.com/groups/LoveLeigh/

Leigh by the Sea - www.facebook.com/pages/Leighbythesea/251994924849626

Leigh Historical Photographs NZ - www.facebook.com/groups/739949979454558

TOSSI www.facebook.com/tossi.nz/

If your club or group does not appear, please advise the editor.