

LEIGH RAG

August 2018

Leigh Rag is supported by the Leigh Community and compiled and edited by Tony Enderby, 19 Albert St, Leigh, Ph 422 6127. Please submit contributions before the 15th of each month. **Leave copy in the box at the Leigh General Store or email to leighragnz@gmail.com**

Please Note: The Editor of the RAG does not take any responsibility for the contents of items supplied.

**Newsletter for Leigh, Matheson Bay, Whangateau, Pakiri
Sponsored by Leigh & Districts Ex Services and Community Club,
Leigh Fisheries and the Leigh General Store**

View the Leigh Rag online

www.leighbythesea.co.nz/news-events



**JOIN US FOR A GREAT
MORNING TEA AT**

**10 LAX CRESCENT
LEIGH**

31 AUGUST, 2018 AT 10.15 AM ALL WELCOME!

PLEASE BRING A SMALL PLATE OF FINGER FOOD

Leigh Volunteer Fire Brigade

invites the Leigh Community to our

Fire Station Open Day

Saturday, 15 September from 2-4pm

*Come along and have a look around the refurbished fire station,
enjoy a sausage sizzle and a drink with the team.*

We look forward to seeing you there.



Editorial

It's always great to see a community get together for a social event. The recent Leigh Dance at Leigh Central was great and a sell-out. I think we all got to meet some of the newer Leigh residents and catch up with some we hadn't talked to for a while. Congratulations to the team at Leigh Central and the members of local businesses and the community who banded together to make this such a success.

Leigh has always been great for community initiated events such as clean ups, planting, weeding, pest control etc. The recent talk by Jud Croft at the Leigh Community Club meeting raised the issue of plastic rubbish in the ocean. We've been pretty good at cleaning up the roadsides around our area over the past few years. Unless someone picks it up, all this plastic waste gets into the ocean eventually. Another Leigh clean up prior to summer will be held and notified in the rag, so join in – every little bit helps.

The problem is where the waste comes from. Years ago most roadside waste was beer bottles and cigarette packets. Today it is plastic containers, water bottles, straws, shopping bags, fast food containers and packaging. What we need to do is look at what we buy and how it is packaged. Much of this packaging, such as around fruit and vegetables is totally unnecessary.

Why not use a reusable water bottle or coffee cup. I notice that quite a few coffee makers now promote this and some give a discount.

But the big picture is bleak. Every plastic milk bottle, fruit drink bottle and water bottle has a lid and a plastic seal. Walk along any beach and you'll find these, along with a host of other plastics, strewn along the tide line. While we can help by picking up the rubbish, to solve it we need to get to the source. Have a think each time you buy something as to whether it's going to add to the plastic pollution and if it does, look for another product that won't.

Tony Enderby

The Knitting Truck

yarn, needles, patterns, ready
made knitwear and classes

We primarily stock N.Z. Yarn and
locally made products

Open 10-4 Wednesday Friday,
Saturday & Sunday
11-5 Thursday

Closed Monday & Tuesdays
Based at Charles Gelato

17 Sharp Rd Matakana

021-194-5631



LEIGH ELECTRICAL LTD

JOE ROBERTS
Phone: 021 220 3717
leighelectrical@hotmail.com
42 Hauraki Rd, Leigh, 0985

LEOPARD SEAL SIGHTINGS

Brittany Mathias is currently working as a research assistant for LeopardSeals.org which is run by researchers who volunteer their time. They saw a need for a dedicated location where people could get factual information about leopard seals found around New Zealand. They want to move towards better protection for leopard seals in New Zealand waters, through education, conservation and scientific research and hope their research will inspire people to respect and appreciate the amazing wildlife on our shores. Brittany has confirmed that the individual seen on the Leigh Boat ramp in March 2016 was a female leopard seal named Owha. She has been residing in New Zealand since 2012 and was first spotted in Dunedin. Since then she travelled north and was first recorded off the coast of Northland at Ruakaka on 1 June 2015. She has spent at least three years in the waters on the east coast of Northland and the Waitemata Harbour and can be identified her by a v-shaped scar on her face and two parallel lines on her back. If you spot leopard seals anywhere around the New Zealand coast they would love to hear from you.



<http://www.leopardseals.org/>
<https://www.facebook.com/LeopardsealsightingsNZ/>

GARDEN BAGS

(hold approx. 1 cu.m)
FOR ALL **GREEN** WASTE

DROP OFF – PICK UP
From \$20 each

Phone **FRICK**

021 123 0997
or 09 422 6223

PLANTS

18 Old School Road
Leigh

Hardy perennials

Come for a browse

Open 9-4pm

Friday, Saturday, Sunday

Ph 09 422 6198

Shadze of Lace

sizes 10-22

or made to measure

Phone 09 425 0515

Note new address:

15 Elizabeth St, Warkworth

Also ALTERATIONS - REPAIRS

Hems, Zips, Dressmaking

www.shadze.co.nz

Inaugural Leigh Midwinter Dance

It was fantastic to see so many of our local businesses supporting the inaugural **Leigh Midwinter dance** last month.

The event was a huge success with all 150 tickets pre-sold and an amazing night of music, dancing and fun for our local community.

Big thanks go to these businesses for their donations of food, facilities and prizes:-

Leigh Motors, Leigh General Store, Leigh Central, Leigh Sawmill Café, The Goldminer's Daughter, Leigh Bar, Leigh Fisheries and Leigh Eats. A little further away from home, big shout outs also to Sawmill Brewery, Matakana Smokehouse, Matakana Deli, Matakana Botanicals, Puhoi Cheeses, Matakana Butcher, Cheese on Wheels, Home Fresh Lettuces and The Simple Signman. Cheers all – and well done Leigh community!

For any further information contact Jan Scott 09 422 6681

www.leighbythesea.co.nz

need
computer help?

We come to you!

mobit.

PCs, Macs, desktops, laptops, phones, tablets
televisions, and more. Any and all of your
technology troubles solved, finally.

For more information and pricing,
please just give us a call, or visit our website:

09 952 4568

www.mobit.nz

Leigh Church Services

All denominations and visitors are most
welcome to join with us each
Sunday at 11 am

There is also a prayer
meeting every Sunday at
10.30 am.



All welcome



Your Local
Painter/Decorator
with over 25 years experience
serving all surrounding areas.

Leigh Decorators

- Painting
- Paperhanging
- Roofs
- Airless Spraying
- Stopping
- Repaints
- New Homes

For your Free Quote and/or
Consultation,

Phone Gary

Home: 09-422-6695

Mobile: 021-024-44941

Email:

leighdecorators@outlook.com

**Top of the Town
CHIROPRACTIC**

Dr Gerald Turnbull

REGISTERED CHIROPRACTOR
Suite 1 1/1 Elizabeth St, Warkworth

021 0870 4718

www.topchiropractic.co.nz

HOURS

Mon & Tue 9.30—2.30

Thurs 2.00—6.00

Hours by Appointment

Walk-ins welcome during clinic hours





Leigh Mid Winter Dance photographs *from the top left to right*

The Seaview Room at Leigh Central
Family and friends of Christina Blackwell enjoying special time together .

Oliver Bones and his band provided excellent sounds for the night.

Guy Parkes photographer for the event. More photos can be seen at https://www.facebook.com/pg/leighcentral/photos/?tab=album&album_id=1659843130792593

New - Leigh History Group

At the AGM of the Matheson Bay Neighbourhood Association in 2017, a few members suggested creating a history group to record the local stories. Some enquiries were made, but failed to take off.

At the 2018 AGM, the idea was mentioned again and further investigations made. The proposal is for a group to record the history of the current local families in the five villages of the Leigh Coast area – Pakiri, Leigh, Matheson Bay, Ti Point and Whangateau. There are already many stories passed on by mouth and in conversation. The group aims to document these tales in a formalised manner.

Conversations with Sheryl Corbett, Tracey Lawton and the library committee have found a home for the results of the project. The library might also be available as a venue to conduct interviews.

The library had a clean out a couple of years ago and much was donated to the Warkworth Museum, with soft copy records maintained. The history of the founding generations of the district, the immigrants and the boat building are well documented, some now in books.

This project aims to document the tales of the people of our current generation. A meeting will take place on Tuesday, 28 August at 1pm in the lower meeting room of the Leigh Hall. Tea and coffee will be available (yes country hospitality).

Peter Spence, secretary of the Matheson Bay Association, will convene the meeting to establish a working group to develop the way forward for the project, the methodology used, the recording methods and any other logistics. The steering committee will take control from that point onwards. An email has been created for the group: historyleighnz@gmail.com. Contributors from Pakiri through to Whangateau are encouraged to attend and help set the way for this useful project. Please respond to the email your interest to attend, or current apology and interest, or phone Peter Spence 021 404 529.

**LEIGH
RAG**

ADVERTISEMENT RATES

Deadline 10th of month

Standard size adverts—\$15 each or \$75 for 11 issues

(Larger ads priced as required)

Email leighragnz@gmail.com

or phone Tony on 09 422 6127

DIGITAL PRINT CENTRE Chappell Printing Ltd

- Laser prints & copies
- Scan from prints
- Large format prints
- Large scanning
- Laminating
- Canvas prints
- Binding

Phone 09 425 9394

11a Clegg Place, Warkworth

Email: chaprint@xtra.co.nz
www.chappellprinting.co.nz

Repairs & Maintenance

CAM

Mob: 021 048 4117

or Mob: 027 237 8216

Email: kgbon47@gmail.com

**Specialising in Aluminium
& Wooden Joinery**

Leigh & Districts Ex Services & Community Club

What an amazing month of winter weather we've just had, day after day of sunny calm days, just perfect for getting all those garden jobs done I put out a guava moth trap last night and caught 12 moths in my peach tree! The dance was a great night out for those who attended, lots of locals enjoying their first visit to the transformed Leigh pub, and happy to see it as a functioning place after being empty for so long. The Leigh Community Club, the Business Group and Leigh Central worked hard to make the dance a success, so thank you everyone involved.

Do you know that we collect wine bottle tops and ring pulls and give them to Kan Tabs for Kidney Kids which raises money for children with kidney failure. Bring any you collect either to the Leigh Bowling Club or drop them at my house.

At our last meeting, local man Jud Croft, gave us a highly informative talk about the waste that is getting into the sea and some of the positive things that are being done to try to reduce it. Thank you Judd for your time.

Looking forward, the community club is busy investigating new projects such as waste minimisation and progressing current projects around town, Kowhai Reserve, Kowhai all weather walkway and installing more path signage. Our next meeting will be on Sunday, 2 August at 4pm. See you soon.

Lucy Harris

COASTAL PAINTERS

Interior/Exterior

Leigh & Surrounding Areas

Call David 021 156 3461

David@coastalpainters.nz

REEL BLUE SPORTS

Fishing Tackle

For all your local fishing needs

Hooks, Braid	Fluorocarbon Leaders
Game Swivels	Hapuka Rigs
Live Bait Rigs	Richter Game Lures
Innovative Lures, ESCA Hapuka Attractors	
Metal Jigs, Inchiu Jigs, Slow Jigs	

Email: stephen@reelbluesports.co.nz

[www: reelbluesports.co.nz](http://www.reelbluesports.co.nz)

Ph 027-777-3-222

**Buy on line and save
Support local business**



Rochford Landscapes & Mini Diggers

Leigh Local

Covering all aspects of Landscape Construction

As well as our successful landscape construction and mini digger services, we are now offering a Greenscape division offering:

- | | |
|--------------------------------------|---|
| ● Hedge and tree trimming | ● Garden maintenance and installation |
| ● Planting services | ● Revegetation and wetland installation |
| ● Lawn installation | ● Lifestyle block maintenance |
| ● Section clearing and waste removal | |

0508 2 SCAPE 021 939 117
rochford.landscaping@gmail.com

Leigh Business Community

The Leigh Business Community enjoyed dinner together at Leigh Central on Thursday, 9 August followed by our AGM. We were joined by Beth Houlbrooke, who was able to provide insights on her responsibilities as Rodney Local Board Chair and how they work with local communities. We were also joined by Councillor Greg Sayers, who was able to discuss with us some of the impacts of the new rating that has affected accommodation providers. Alan Macdonald, our Chairperson, has been following up with Auckland Council on behalf of our local B&B members on this issue.

If you are involved in a business in the Leigh area (Whangateau to Pakiri) and would like to be part of the Leigh Business Community, please send an email to leighbytheseanz@gmail.com.

The Leigh Business Community is one of the local groups that are members of Matakana Coast Tourism, which promotes the region from Puhoi to Pakiri. While some people do not agree with the name 'Matakana Coast,' it is a brand that is being used to attract visitors to our region. Visitors provide the income that local businesses need to stay open all year round and without them we would not be able to enjoy the food and retail outlets that we have in our community and the jobs that are provided for locals.

www.leighbythesea.co.nz



**AWNINGS | BALUSTRADES | GATES
SHOWERS | WARDROBES
SECURITY & INSECT SCREENS**

Free Measure & Quote

**Free phone
0800 466 374**

Visit our website

www.homeplus.co.nz



HOMEPLUS RODNEY

16-18 Morrison Drive
Warkworth

Ph 09 425 7053



**Snorkel Hire
Schools
Information**

2 Seatoun Avenue
RD5 Leigh
021 92 6212

www.theoctopushideaway.nz



LEIGH VOLUNTEER LIBRARY

Situated in The Cottage opp General Store

OPEN:

Tuesday 2pm-6pm Wednesday 2pm-4pm
Thursday 11am-1pm Saturday 9.30am-1pm

Kia Ora

The Leigh Library team won this month's quiz night at the Leigh Bar – proof perhaps that lots of reading is beneficial! As one of the recipients of this monthly community fund-raiser, we would like to thank the organisers and the money donated has been spent on new books for the library this month. We have new novels by Simon Mawer, Louis de Bernieres, Santa Montefiore and Nigella Lawson's latest cookbook, *At My Table*, that is currently featuring on the food channel on Sky TV.

We also have Aotearoa, Gavin Bishop's multiple award winning, richly illustrated visual history of New Zealand. Amazing reading for young and old alike.

Maike Zwetsloot has kindly provided the new art we have on our walls and we encourage you to come down and have a look. Committee member Chris Cruikshank does a great job of organising artists who want to display their work and it provides such a lift to us all in the library.

Days are starting to get longer, the spring bulbs are all out ... perhaps it's time to check out some of our fabulous gardening books?

Tracey Lawton

LEIGH VOLUNTEER FIRE BRIGADE 50 YEARS BOOK

This 50-year celebration book will be available at the fire brigade open day. The 100 page book includes many colour photographs and is 20cm x 28cm. The cost of each book is \$25.

See any of the brigade members to get a copy.



The Insurance Lady

Sue Cole IBANZ, PIB

Insurance Broker, Financial Adviser 28045

027 422 7668 • A/H 09 422 7668

sue@dhabrokers.co.nz

30 Years Insurance Industry
Experienced in Domestic & Commercial, Fire and General Insurance.

Please email or phone for a quote.

****NB: Using a broker does not cost you money***



***Member Broker of PSC Connect Steadfast Group**



Leigh School

Welcome back! The children started off Term 3 enjoying a production by the Kahurangi Dance Company. It was good timing as the enquiry at Leigh School this term will focus on the Arts. The children and teachers are planning a production called "Pirates and Mermaids"

which will include dance, drama, music, costume and prop preparation. To make this happen the school will need some items such as sparkly material for mermaid tails, blue and green material for the sea, black fabric for a cave, mops, buckets, a barrel, thick ropes, old fishing nets and very large cardboard boxes to make props. If you have any of these items which you are happy to donate or loan, and/or if you are interested in helping in any capacity (sewing, prop design/construction), could you please let the school know 09 422 6031. "Pirates and Mermaids" will be performed at the end of the term.

Last term the school hosted a "Grandparents Day" where the children got the opportunity to show their family their work as well as sell items they designed and made. They raised \$441 and following a vote by the children, they have decided to donate half the money to "Julies Animal Refuge" in Kaipara Flats and half to the "KidsCan Charitable Trust".



In the heart of Leigh Village

*Five stylish self-contained motel units with a
retro beach vibe*

*Motorhome/Caravan Park
Function and Events Centre*

www.leighcentral.co.nz

Phone: 09 422 6070

Mobile: 021 246 0757

Last Saturday the school held a working bee. Many parents showed up and managed to tick off a long list of jobs. Thanks to all who helped and Peter Browne for organising!

A big pakipaki to both the senior and junior hockey teams on their wins last Saturday!

We are still collecting Yummy Apples stickers. The new variety of apples, Ambrosia, Lemonade and Sweet Tango are worth double the points. Thanks to those who have passed on stickers to the school and we welcome any more. We are well on our way to some great sports equipment!

Chicken pox has been confirmed at Leigh School.
Kate Shears

NATIVE TREES

Grasses, Shrubs

Wholesale Prices direct
to the public

LIBERTY PARK

90 Jones Road

Omaha

(09)422 7307

Monday – Friday

8am – 4.30pm

Sat 9am—3pm



BUILDING PLANS & CONSENTS

Geoff Alexander (NDAT)

LBP # 123496

Ph. 09 422 6624

Mob. 0272 260 161

alex.g.h@xtra.co.nz



Design & Draughting Services

Resource Consents

Building Consents

Concept Design

New Builds

Alterations

Additions

MATHESON BAY NEWS

The mid-winter pot luck dinner was very successful with a good turnout and yummy food. Great to see some new faces along with the usual suspects. The Leigh hall annex looked lovely in party mode and new resident Lynn Mellsopp who helps to manage the hall made sure we had a smooth night. Many thanks to our secretary Peter Spence and his team for organising an enjoyable evening.

With the warmer weather the beach is quite busy in the weekends, for winter, and the odd campervan and divers still turn up. The Kohuroa stream reserve is very boggy and it looks like the small amount of drainage is no longer working. The area has been chained off for the past couple of months. I'm progressing with the animal pest control plan and having fun learning the intricacies downloading Auckland Council maps and adding stuff to them. Hopefully the program will be up and running soon.

Louise van Campfort

EARTHPRO

THE EARTHWORKS PROFESSIONALS

▪ WE SPECIALISE IN ▪

driveways • house sites • hard landscaping • ponds
farm drainage & race maintenance • section clearing
commercial site preparation • drilling • rock breaking
and all other earthworks

TRUCKS • DIGGERS • METAL SUPPLIES

We cover the Rodney area and offer 25 years experience
Locally owned & operated • Quality & Service Guaranteed

Contact: Mark Logan

021 557 873

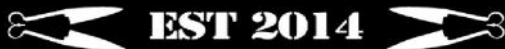
earthpro63@gmail.com

Leigh Waterblasting Services

House Washing
Driveways
Slippery Steps
and Pathways etc

Phone Bryn on 0226369801

LEIGH BAR



EST 2014

QUIZ NIGHTS

First Monday of the Month
4pm Leigh Bar opens
6.30pm Quiz starts

\$5 per person

Book tables at Leigh Bar
Numbers are limited

\$15 steaks available
\$200 worth of prizes



LEIGH BAR



EST 2014

Monday \$15 Steak Night 4pm to late
Tuesday \$10 Burger Night 4pm to late

Takeaways available Monday & Tuesday

Wednesday and Thursday closed

Friday 4pm to late.

Saturday and Sunday 12pm to late

Pick up your **LOCAL CARD** for special local deals.

21 Hauraki Road, Leigh
or call Richard on 021 0419 242

GOOD SORTS



Our GOOD SORT this month is **Penny Garrick**, nominated by Liz who wrote the following:

The recent Leigh Midwinter Dance was a great success and a credit to all those who volunteered their time and energy to make it so.

*One person in particular did an amazing job - **Penny Garrick**. Penny canvassed local businesses to garner their support for food and spot prizes on the night. In the monthly report from the Leigh Business Community there is a full list of these businesses that supported the dance.*

It is no easy task to cold call and ask for donations. Penny did this and achieved a great result - thank you Penny.

The Leigh Community Church agrees and home baking is coming your way Penny.

NOMINATE A LOCAL GOOD SORT

Our Good Sorts column has run for a number of years, sponsored by Leigh Community Church. Many fantastic locals have been the Good Sort of the month over the years but there are others out there who also deserve the award.

If you know someone like this who has not yet been nominated, please write in a few words their good deed or thoughtfulness, including their name, address and phone number and drop it into the Leigh General Store in an envelope marked "Good Sort" or email the Editor at enderbys@xtra.co.nz.

The person considered most deserving will receive home baking courtesy of Leigh Community Church.

LEIGH GENERAL STORE OPEN 7 DAYS

- ▶ Groceries
- ▶ Ice Cream & Drinks
- ▶ Fresh Fruit & Vegetables
- ▶ Magazines, Postcards & Films
- ▶ Free Range Eggs
- ▶ Hardware & Seeds
- ▶ Bait & Fishing Gear
- ▶ Wine

EFTPOS AVAILABLE
Phone 09 422 6034

DIALADIGGER earthworks

- Site Works & Foundations • Drainage & Driveways
- Drilling < 600 mm • Section Clearing • 8 Tonne Tipper Available

Brian George experienced & efficient operator

021 749 594 Brian | 09 422 6267 Office
info@dialadigger.co.nz



Leigh 100 years ago

It was the 4th anniversary of the declaration of war. King George V had requested a day of united prayer to God to give the Allies victory. The Methodist minister, Reverend Orchard conducted a service in the Leigh Hall on 4th August. Farmers were concerned about a big increase in their taxes when the war eventually ended. The Farmers Union, which had been operating since 1899, appointed organisers in each of the provinces to set up as many branches as possible to ensure a unified farmers' voice. Farmers from Leigh and Big Omaha met on 8 August in the Leigh Hall to hear Tancred Cooper, the Auckland Province's organiser. Although disappointed there were no farmers from Pakiri present, all agreed to form an Omaha Branch. Membership fee was 30 shillings each.

Charles Clarke celebrated his 75th birthday on 15th August. He and son, Willie had been planting potatoes, 12 rows of ½ cwt. of "Northern Star" and "Up To Date" varieties. Charles continued to provide flowers to many including the flowers for the wedding between Irene Dunning and Ernie Greenwood at the Leigh Hall. He had recently purchased from Lippiatt's Nursery six roses, each costing 3/6, all scented and developed in France: Queen Mary, Alfred Colomb, General Jacqueminot, Lieutenant Chaure, Sirday and Souvenir of Stella Gray. William Lippiatt had set up the nursery in 1883 in Otahuhu, in the now Sylvia Park area. He imported roses from a Northern Ireland grower.

Charles Clarke's Diaries; Rodney and Otamatea Times, 14 August 1918; Eagle, Dawn "Roses Down Under; The World's most Beautiful Roses and where they came from." 2013. www.xlibris.co.nz retrieved 23 July, 2018.

Sheryl Corbett



RODNEY SEPTIC TANK CLEANING

PETER CAIRNS

Telephone: 09 422 7166

Mobile: 0274 946 370



We also offer the following:

- ♦ Water Filters
- ♦ Pool Valet Service
- ♦ Water Testing
- ♦ Water Treatment
- ♦ Spray Equipment
- ♦ Mobile & Workshop Services

31 Woodcocks Road, Warkworth ♦ Phone 09 425 9100
E: splashwater@xtra.co.nz

LJ Hooker

We have been selling Leigh for almost 30 years, love working and living here and supporting our community, and we are continually achieving great results for our clients.



For all your real estate
needs pop into our

Leigh Office

or call me on

021 490 039

☎ **Marie-Dominique 021 490 039**

@ mlennan.warkworth@ljh.co.nz

📞 09 425 8589

✉ 20 Cumberland St, Leigh

20 Queen St, Warkworth

🌐 warkworth.ljhooker.co.nz

📘 facebook.com/Leigh.Matakana.Properties

LJ Hooker Leigh

Broadbents 2001 Limited Licensed Agent REAA 2008



Leigh PreSchool

The children got a great surprise on their return to preschool. Over the school holidays Rochford Landscaping had been very busy making a new water feature with a bedrock stream and a flash new bridge for crossing the 'stream' to get to the Wendy house. They also fixed the blocked drain adjacent to the sand pit. Everyone is over the moon with the new playground addition. We are now looking at ways to tidy up some of the other areas with more bedrock and or shell.

Aotea (Over 2's) classroom welcomes back Evangeline, who took a few weeks off to visit her family in South Africa. Evangeline not only has the most gentle and beautiful voice, she has a real knack for making our centre look beautiful and tidy. Thanks Evangeline!

The kids at preschool have been busy being super heroes! To encourage this play, Ange purchased some new hero costumes and they have been taking time to discuss what it means and looks like to be a super hero. Our super heroes help people in need and are gentle and kind. It is a great example of play being a child's work, and how play is the foundation of behaviour.

Our annual Gala Day, Sunday 21 October 21, is fast approaching. We have started to collect Bric-a-brac items. If anyone would like to donate items, in good condition only, these can be dropped off at 9 Pakiri Rd.

We currently have spaces available in both the Under 2's and Over 2's. If you are interested please contact Brenda at Preschool Ph: 09 422 6516.

Kate Shears

SECTION SERVICES

TREES:

pruned, reduced,
Removed

HEDGES:

trimmed, reduced

Phone Dom 027 222 1223

dguzzo2000@yahoo.com

FOR ALL EMERGENCIES

DIAL 111

Fire - Ambulance - Police

Don't waste valuable time trying
to find local numbers to call if
you need fire, ambulance, police
or assistance.

**Call 111 and ask for the
appropriate service.**

GOAT ISLAND NZ

**GLASS BOTTOM
BOAT TOURS**
KAYAK & SNORKEL HIRE

Look, learn, play & explore!

See marine life, caves & reefs aboard
our 45-minute fully commentated tour!
Located on the beach, Goat Island
Marine Reserve. Bookings essential.



www.glassbottomboat.co.nz info@glassbottomboat.co.nz 09 4226334/027 4979764

Leigh Volunteer Fire Brigade

The fire station upgrade is almost complete with just minor finishing touches to the interior which should be completed by the end of August. The general consensus is that the alterations look good.

Leigh brigade members responded to 16 callouts in July. These were a chimney fire at Omaha Valley which was out on arrival, a fire at Matakana Hall, false alarm at Omaha Flats, a lift assist at Whangateau and first response medicals to Leigh (6), Omaha, Big Omaha, Omaha Flats, Matheson Bay, Whangateau and Ti Point.

Two of our members, Mark Brockie and Brooke Sanderson, have successfully completed a seven-day recruit firefighter course at the Auckland Training Centre. This strengthens our team a bit more and they will bring back info on changes with equipment and training that we'll all learn from.

Our first responders attended a refresher course on advanced first aid recently.

In order to keep to first responder standard this is one of two one-day courses to be attended each year.

We plan to hold an open day for the community to come and see the changes to the fire station on Saturday, 15 September and full details are on the cover of the Rag.

The weather seems to be improving and warming up a little making training for brigade members a little more pleasant. If you think you might be interested in becoming a firefighter you're welcome to come down to the fire station at 7pm on a Tuesday and see if what we do suits you – no obligation to join.

Tony Enderby



**GOAT ISLAND
MARINE DISCOVERY CENTRE**
THE UNIVERSITY OF AUCKLAND
NEW ZEALAND
Tē Whare Wānanga o Tāmaki Makaurau



**Open
10 to 4pm
weekends, school &
public holidays
now to 30 Nov**

Open everyday
1 Dec to 30 April

09 923 3645
www.goatlandmarine.co.nz

MOWING Sections,

Large Lawns & Lifestyle Blocks



TRACTOR WORK

Post Thumping

Spraying etc

CRANE TRUCK Rubbish removal

General Lifting up to 2 tonne

Ph FRICK 0211230997



Creative solutions

Health & Safety in the workplace

Advice, Site Specific Plans, Policies & Procedures
prepared for

**Tradesmen, Businesses, Farms,
Companies or sole traders.**

*Free no obligation quote, give me a call
to discuss your needs*

Wendy Stephens

PO Box 195 Leigh

027 284 9300 or 09 422 6260

The logo for Mike Pero Real Estate, featuring the name 'mike Pero' in a white, handwritten-style script font on a black rectangular background.

Mike Pero Real Estate Licensed REAA (2008)



Proudly supporting *you* and your *community*

Supporting: Mahurangi College, Warkworth Town Hall Restoration, Warkworth/Wellsford Hospice, Matakana School, Omaha Golf Club, Rodney Rams League Club, Mike Pero Foundation, Point Wells — Christmas Letterbox Competition, Community Centre, Croquet Club, Fete and Library.

Angela Wain

Mike Pero Matakana Coast

P: 0274 936 800 or 0800 MATAKANA | Angela.Wain@mikepero.com



@mikeperomatakanacoast

Leigh Motors now has a 24-Hour fuel self service pump.

Payments are made at the outdoor payment terminal by eftpos, visa, mastercard or BP card.

"It's really easy to use and we are happy to show people how to use it when they come to fill up."

Azar Atkins



PENGUIN NESTING BOXES

Forest & Bird Warkworth Area have made boxes for little blue penguins that come ashore on our coast to nest. If you know of places where penguins have been seen coming ashore please contact Jenny Enderby email enderbys@xtra.co.nz or phone Karen Baird on 09 422 6868.



RODNEY AUTO TRIM

Specialists in
Auto & Marine Upholstery

- ♦ Marine Hoods, Covers, Squabs
- ♦ Truck and Tractor seats
- ♦ Car hood linings, seats, carpets
- ♦ Motorbike seats
- ♦ Balcony Screens, clear and mesh

Alan Hodge

Ph 09 422 6822 Mob 022 675 1046

12 Penguin Street, Leigh

Email: rodneypautotrim@gmail.com

Ask an expert about all your travel needs:

- | | |
|--------------------|------------|
| ✓ Accommodation | ✓ Car Hire |
| ✓ Holiday Packages | ✓ Flights |
| ✓ Travel Insurance | ✓ Tours |
| | ✓ Cruises |

FLIGHT CENTRE®

The Airfare Experts

LOWEST AIRFARE GUARANTEE

We will beat available airfare quotes for flights departing from New Zealand or you fly free.*
Conditions apply*



Flight Centre Warkworth | 54 Queen Street
Call 09 422 3302 | 0800 292 759
warkworth@flightcentre.co.nz

▼ For full terms & conditions see flightcentre.co.nz/lowestairfareguarantee

WHANGATEAU HALL

Currently on at the hall is the final weeks of the Winter Leigh Choir. Participation has been fantastic with between thirty and forty singers attending each week. There will be a performance evening on in the early spring.



webster|malcolm|law

**Trusted
Approachable
Experienced**

15 Neville Street, Warkworth
09 425 8037

info@webstermalcolm.co.nz
www.webstermalcolm.co.nz

FOLK CLUB

Guest performer

Pete and the Skiffy Rivets

7pm Monday 27 August

Doors Open at 6.45pm

For more information contact
Jenine Abarbanel

jenine@torkington.com

News and updates at
www.whangateau.co.nz

LEIGH MOTORS 2017 LIMITED

- WOF
- SERVICING
- REPAIRS
- FUEL 24 Hour-Self Service
- BATTERIES
- GAS BOTTLE SWAP
- TYRES
- BAIT & ICE

***Come and chat to our friendly team for all your
mechanical requirements***

Ph: 09 422 6077

EMAIL—leighmotors2017@gmail.com

Community Directory

Forest & Bird Community Coast Care Group – a community initiative to restore Leigh's reserves and bush areas, monthly weeding, planting bees Neil Sutherland 09 422 6001

Graffiti Coordinator – Lionel Anderson 021 795 306 call or txt with location of graffiti

Leigh & Districts Ex Services & Community Club - meets 4pm, 1st Sunday of month at Leigh Bowling Club. Anzac Day Service and Community Matters. New members welcome. President Lucy Harris 021 202 8932

Leigh Badminton Club – anyone interested in re-starting this club please call Dennis Humphrey 09 422 6625

Leigh Bowling Club - to foster fellowship and the game of bowls. New members welcome. President Biscuit McLean 027 590 4829 or sec. Dave Johnson 09 422 6560

Leigh Business Community - meets 3rd Wednesday of month Jan Scott 09 422 6681

www.leighbythesea.co.nz

Leigh Cards 500 - 1pm - 3.30pm Tuesday, Leigh Bowling Club, all welcome, \$3.00

Leigh Cemetery Trust - Secretary Joyce McCormick 09 422 6893

Leigh Community Preschool - 09 422 6516 www.leighpreschool.co.nz

Leigh Girl Guides, Brownies & Pippins - Fay Bradnam 021 0279 0161

Leigh Hall - Bookings / enquiries phone Lynn Mellsopp 027 2868 625 or email

leighhallauckland@gmail.com

Leigh Harbour Valley Society - 09 422 6880 www.leighharbourvalleysociety.org.nz

Leigh Historic Group currently being formed email historyleighnz@gmail.com

Leigh Library – 'The Cottage' opposite Leigh General Store. Librarian Tracey Lawton 021 825 818 / 09 422 6944 Library Hours as follows:

Open Sat: 9.30-1pm; Tues: 2pm-6pm; Wed: 2pm-4pm; Thurs: 11am-1pm

Leigh School – 09 422 6031 www.leigh.school.nz

Leigh Tennis Club – enquiries at Leigh Eats or Marie Dominique 021 490 039

Leigh Walking Group - meets Mondays at 9.30am for interesting walks throughout the Rodney, Kaipara and Auckland regions. Hugh McKergow 09 422 6219

Leigh Women's Bowling Club - meet Tues, Oct-April, for friendly bowls. New members very welcome. Olive Gravatt 09 422 6273 or Wendy Brooks 09 422 7963

Matheson Bay Neighbourhood Assn - Secretary Peter Spence 021 404 529 or mathesonbayassn@gmail.com

Pakiri Community Landcare Group - Frankie 021 688 997 or nick@nickmolloy.co.nz

Pakiri Tennis Club Contact Linda Taylor (Secretary) on 021 242 7459

Rodney Rams Secretary Amy Weller 021 138 1407 rodneyrams@outlook.com

Tawharanui Open Sanctuary Society Inc. (TOSSI) - www.tossi.org.nz Secretary Karyn Hoksbergen 09 585 1315 email secretary@tossi.org.nz

Whangateau Acoustic Music & Social Club - www.whangateau.co.nz

Whangateau Neighbourhood Support – Sharyn Carew sharyncarew@vodafone.co.nz

Whangateau Residents & Ratepayers Assn meets 7.30pm, 2nd Tuesday of month at Whangateau Hall. Audrey Sharp 09 422 6209 or Hugh McKergow 09 422 6219

JUSTICES OF THE PEACE & CELEBRANTS

JP - Fay Bradnam 09 422 6038

JP & Wedding Celebrant - Dr John Peebles 021 974 247

JP & Funeral Celebrant - Barrie Mason 021 683 747

Celebrant Annie Mellor www.fabulousweddingnz.com Ph 027 9297767

FACEBOOK

Love Leigh - www.facebook.com/groups/LoveLeigh/

Leigh by the Sea - www.facebook.com/pages/Leighbythesea/251994924849626

Leigh Historical Photographs NZ - www.facebook.com/groups/739949979454558

TOSSI www.facebook.com/tossi.nz/

If your club or group does not appear, please advise the editor.