

LEIGH RAG

MARCH 2018

Leigh Rag is supported by the Leigh Community and compiled and edited by Tony Enderby, 19 Albert St, Leigh, Ph 422 6127. Please submit contributions before the 15th of each month. Leave copy in the box at the Leigh General Store or email to enderbys@xtra.co.nz

Please Note: The Editor of the RAG does not take any responsibility for the contents of items supplied.

**Newsletter for Leigh, Matheson Bay, Whangateau, Pakiri
Sponsored by Leigh & Districts Ex Services and Community Club,
Leigh Fisheries and the Leigh General Store**

View the Leigh Rag online

www.leighbythesea.co.nz/news-events



EASTER SUNDAY SERVICE

9.30am at Leigh Church

**Jesus is alive
Come and celebrate**

AUCKLAND COUNCIL 10-YEAR BUDGET

WWW.AKHAVEYOURSAY.NZ

EDITORIAL

Rodney has always been the poor relative since becoming part of Auckland Council. Our rates never seemed to reflect the lack of services we received compared to the inner suburbs of Auckland and our roads remain largely neglected. Hill Street intersection is now nationally famous for its inefficiency, something that Auckland Council, Auckland Transport and New Zealand Transport Agency share responsibility for. The motorway north from Auckland is the only tolled road in the area and will attract a second toll for the Puhoi to Warkworth section. A proposed fuel tax will also hit us with an extra 10 cents a litre for no return or benefit.

Auckland City's Mayor, Phil Goff has kept his word that rates will be kept to a 2.5% increase. To do so he has added a series of surcharges. The \$150 transport surcharge will not benefit us as it stands. There is a consultation process where you can have your say on this at www.akhaveyoursay.nz. It also includes several other surcharges that fall outside the 2.5% rate increase. We collectively need to make our voices heard on whether we agree with these charges, especially where there is no benefit to those living in our area.

I have no problem paying extra to get additional services but resent Auckland Council's approach making us pay for someone else's services. Even their public meetings are poorly planned – the nearest one to us is Wellsford.

Let's make ourselves heard and put in submissions so we actually get what we need in our area. I've filled in the council's questionnaire on line. You can do so too – just get it done and submitted before March 28.

www.akhaveyoursay.nz

The Knitting Truck

yarn, needles, patterns, ready made knitwear and classes

We primarily stock N.Z. Yarn and locally made products

Open 10-4 every day except for Tuesdays closed

Based at Charlies Gelato

17 Sharp Rd

Matakana

021-194-5631

H₂O PUMPS LTD

Water Treatment Pumping Systems

Sales and Services

- ♦ Water Testing
- ♦ Water Softeners
- ♦ Suppliers and Installers of Whole House UV Steriliser Systems and Cyst Filters

Ph 09 422 7110 Mob 021 771 878

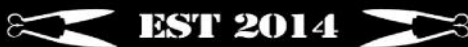
A/H 09 425 6002

OMAHA / MATAKANA / LEIGH

WHANGATEAU

Email: h2opumps@xtra.co.nz

LEIGH BAR



Leigh's local family bar is open for summer

We will be open weekends until the 20th December then we will be open 7 days.

Remember to pick up your

LOCAL CARD

for special local deals.

Simply come to us on

21 Hauraki Road, Leigh

or call Richard on 021 0419 242

Leigh & Districts Ex Services & Community Club



Our AGM was held earlier this month with three committee members standing down after many years helping the club. Their support, knowledge and enthusiasm will be missed, thank you Marion Ross, Bernie Middleton and Dave Wyatt. We welcome Helen Parkes and Trish Gundy who have joined the committee.

Thanks to our fund raising over the year, the club is able to make grants totally \$5250.00 which will be divided between 12 local organisations. All the schools including Pakiri, Leigh Library, Leigh Volunteer Fire Brigade, Leigh Bowling Club, Girl Guides & Brownies and Coastal Care, Hospice, St John's, Homebuilders and Springboard. This money is raised from the subscriptions and our weekly raffle so please join the club and support the raffles.

The Good Sort of the Month can be nominated by anyone, just email the Rag editor or drop a note off at the shop. The lucky recipients get some home cooking provided by the church as a thank you. We have so many people who go about helping others or doing things that mostly go unnoticed, it's great to acknowledge them and what they do, so remember to put in nominations.

Our next meeting is on Sunday 8 April at 4pm. Note the change of date so that it doesn't fall on Easter Sunday. Hopefully Beth Houlbrooke will be the speaker, we're just waiting for her to confirm.

President Lucy Harris

PLANTS

**18 Old School Road
Leigh**

Hardy perennials

Come for a browse

Open 9-4pm

Friday, Saturday, Sunday

Ph 09 422 6198

Shadze of Lace

sizes 10-22

or made to measure

Phone 09 425 0515

Note new address:

15 Elizabeth St, Warkworth

Also ALTERATIONS - REPAIRS

Hems, Zips, Dressmaking

www.shadze.co.nz

MATHESON BAY NEWS

I'm writing this on a lovely sunny day with a gentle breeze, a day after our third cyclone. We were lucky not to be in its path and no damage was done although yesterday rained for most of the day, filling tanks yet again and rearranging the beach.

On my morning walk yesterday there were two dead little blue penguins and one that was taken to the bird sanctuary. They must have succumbed to the heavy surf over the past few days. Hopefully this is not due to lack of fish due to the warm sea as has been happening in the South Island.

Spray Crescent has been dug up in patches (some of which were only done last autumn), and we await resealing. With the clay base and heavier rubbish trucks this road is the worst in the Leigh area and has not had a new seal since well before 1995. It is hoped that the road will be completely sealed and not just patched over the clay again.

Many of you will know Grattan Guinness, who used to live in Matheson Bay and started, with his wife Marguerite, the Leigh Sawmill Café in the 90's. Sadly he died at Goat Island on the 3rd of March. He will be greatly missed by family and by his friends in Matheson Bay and the area.

Louise van Campfort



Your Local
Painter/Decorator
with over 25 years experience
serving all surrounding areas.

Leigh Decorators

- Painting
- Paperhanging
- Roofs
- Airless Spraying
- Stopping
- Repaints
- New Homes

For your Free Quote and/or

Consultation,

Phone Gary

Home: 09-422-6695

Mobile: 021-024-44941

Email:

leighdecorators@outlook.com



Dr Gerald Turnbull

REGISTERED CHIROPRACTOR
Suite 1 1/1 Elizabeth St, Warkworth

021 0870 4718

www.topchiropractic.co.nz

HOURS

Mon & Tue 9.30—2.30

Thurs 2.00—6.00

Hours by Appointment

Walk-ins welcome during clinic hours



Leigh Business Community

The Leigh Business Community were sorry to say goodbye to Andre and Martie Van Schalkwyk as they complete their time managing the Pakiri Beach Holiday Park. We have enjoyed having them as part of our business community and thank Andre for his time on the committee.

The Leigh Business Community works to support local businesses by attracting people to Leigh and making it easy for them to get here. Some of the ideas that we are planning for this year include

- Creating a new road sign for Leigh. Following on from the new logo, the plan is to create a road sign to promote Leigh, probably on the road into Matakana. More details and options to be discussed at the next meeting.
- Initiate further discussions with council around sealing Pakiri Road and providing a footpath out to the Leigh Sawmill Café. Both of these issues would benefit from wider community support, so we would love to hear from anyone interested in making submissions.

We would also like to get Leigh involved in some events that are planned for this year in the region. Any ideas out there, please let us know and we will keep the community up to date with what we are planning.

Creative Matakana (2nd year) 7-11 May 2018 - creativematakana.nz/

Mahurangi Festival of Lights 13-15 July 2018 – a chance to light up the region and attract visitors during the middle of winter.

Feast Matakana – 21 Sept to 14 Oct 2018 – showcasing the food and wine from the region.

For further information about joining the Leigh Business Community please contact Jan Scott 09 422 6681

www.leighbythesea.co.nz



**GOAT ISLAND
MARINE DISCOVERY CENTRE**
THE UNIVERSITY OF AUCKLAND
NEW ZEALAND
Te Whare Wānanga o Tamaki Makaurau



**Open
10 to 4pm
weekends, school &
public holidays
now to 30 Nov**

Open everyday
1 Dec to 30 April

09 923 3645
www.goat island marine.co.nz

WOOD FIRED PIZZA

ITS A FAMILY NIGHT OUT

**HALF PRICE
PIZZA**

THURSDAYS

5-9PM THROUGHOUT WINTER

TASTY NUTRITIOUS & DELICIOUS

Leigh Library Celebration

The Leigh Library recently celebrated the 90th birthday of Averil Lovegrove (left) and Irene Coleman's (right) retirement from the library committee, with an afternoon tea and small presentation. Both women have been stalwarts of the Leigh community for very many years, in a wide range of local activities with the combined contribution to the library committee over 70yrs! Averil was the chairperson of the committee which was responsible for lobbying the former Rodney Council and fundraising to acquire "The Cottage," the present library, and relocate it from Warkworth. Both Averil and Irene gained formidable reputations for signing up new residents to the library and committee within days of their arrival to Leigh!

**LEIGH
RAG**

**ADVERTISEMENT
RATES**
Deadline 10th of
month

Standard size adverts
\$15 each or \$75 for 11 issues
(Larger ads priced as required)

Email copy to:

enderbys@xtra.co.nz

or phone Tony on 09 422 6127



**AWNINGS | BALUSTRADES | GATES
SHOWERS | WARDROBES
SECURITY & INSECT SCREENS**
Free Measure & Quote

**Free phone
0800 466 374**

Visit our website
www.homeplus.co.nz



HOMEPUS RODNEY
16-18 Morrison Drive
Warkworth
Ph 09 425 7053



**Snorkel Hire
Schools
Information**

2 Seatoun Avenue
RD5 Leigh
021 92 6212

www.theoctopushideaway.nz



LEIGH VOLUNTEER LIBRARY

Situated in The Cottage opp General Store

OPEN:

Tuesday 2pm-6pm

Wednesday 2pm-4pm

Thursday 11am-1pm

Saturday 9.30am-1pm

Tropical storms certainly make for good reading weather and we're continuing our summer hours so that it is easy to pop in and get great reading material from the Leigh Library. We also have some lovely puzzles if books aren't what you're after for a rainy afternoon.

We've had lots of amazing kids books donated over the past two months including Kiwi Mark Sommerset's picture books *Cork On The Ocean* and *Cork And The Bottle*. The series *Predator Cities* by Philip Reeve is being made in to movies – come and read the books before the films are released!

The long list of finalists for the 2018 Women's Prize for Fiction has been announced and we have five of the titles, which are all fantastic reads. They are proving popular so put your name down if the one you want to read is out and we will hold it for you when it is returned. The titles we have are *The Mermaid & Mrs Hancock* – Imogen Hermes Gowar, *Eleanor Oliphant Is Completely Fine* – Gail Honeyman, *Elmet* – Fiona Mozley, *The Ministry Of Utmost Happiness* – Arundhati Roy, and *Home Fire* – Kamila Shamsie.

Tracey Lawton

DIGITAL PRINT CENTRE Chappell Printing Ltd

- Laser prints & copies
- Scan from prints
- Large format prints
- Large scanning
- Laminating
- Canvas prints
- Binding

Phone 09 425 9394

11a Clegg Place, Warkworth

Email: chaprint@extra.co.nz

www.chappellprinting.co.nz

Repairs & Maintenance

CAM

Mob: 021 048 4117

or Mob: 027 237 8216

Email: kgbon47@gmail.com

**Specialising in Aluminium &
Wooden Joinery**

Creative Matakana 2018

Creative Matakana is a week-long series of workshops led by award-winning tutors in May. 2018 in the second year and there are some fantastic options on the new website.

There are five-day courses covering drawing and painting, flax weaving, creating a children's story book, textile eco-dyeing, and digital photography. Two and three-day courses include cast glass, iPad art, totem sculpture and fabric art.

This year, there's a fantastic series of 'Landscape Days' too: garden design with experts including Lynda Hallinan, Andy Hamilton, Craig Thorburn, Nick Waipara and Philip Smith, in gorgeous local gardens with lunches included. Extra events include guided tours of Gibbs Farm sculpture park, a special dinner, creative conversations at the Vivian Gallery and open artists studios, including Virginia Leonard, Mike Petre and Vicki Fanning. Bookings are now open and classes are filling fast – head to the website and check it out:

creativematakana.nz

Feel free to contact Vivienne Kerr at creativematakana@gmail.com or call her on 021 541 958 if you have any questions. She is only too happy to help.

MOWING Sections, Large
Lawns & Lifestyle Blocks



TRACTOR WORK

Post Thumping
Spraying etc

CRANE TRUCK

Rubbish removal

General Lifting up to 2 tonne

**Ph FRICK 0211230997 or
09 4226 223**



The Insurance Lady

Sue Cole IBANZ, PIB

Insurance Broker, Financial Adviser 28045

027 422 7668 • A/H 09 422 7668

sue@dhabrokers.co.nz

30 Years Insurance Industry
Experienced in Domestic & Commercial, Fire and General Insurance.

Please email or phone for a quote.

**NB: Using a broker does not cost you money*



***Member Broker of PSC Connect Steadfast Group**

Whangateau Hall News

The monthly markets continue on the 3rd Tuesday of every month. That'll be 20 March this month. Bring/Buy/Sell/Exchange, Friendly community get together, Tea/Coffee

Contact Audrey Sharp, 09 422 6209, am.sharp56@gmail.com

Our Facebook event: www.facebook.com/events/83256996695121/

Monday, 26 March is our monthly club night. Special guest this month is Donna Dean, award-winning singer and songwriter. Doors open 6:45 for floor spot sign-ups. With our first half starting at 7:00pm. \$10. No pre-sales. What reviewers say about Donna Dean: "Not many artists have the imaginations of a Bob Dylan, Joni Mitchell and Leonard Cohen. Or the creative lunacy of a John Prine, Randy Newman or Tom Waits. This is why many good musicians have short careers. It is not as easy to be consistent and creative as you may think. This is Americana music of the highest quality". John Apice - No Depression, USA.

Our Facebook event: www.facebook.com/events/371740419962329/

Thursday, 12 April. Full concert with Daniel Champagne. Doors open at 7pm for a 7:30pm show. Tickets available through EventBrite:

www.eventbrite.com/e/daniel-champagne-whangateau-hall-whangateau-nz-tickets-43464429278.

Daniel will be supported by local musician Oliver Bones, a very talented singer and songwriter as well.

Our Facebook

event: www.facebook.com/events/1956546154659044/

All of this information and so much more can be found at www.whangateau.com.

We also post regular updates there and you can sign up for our informative and pithy newsletter as well. Jenine

ALBERT ST B&B

400m to Sawmill Café or Leigh Bar

**Ensuite
Own entrance
Queen-size bed**

Suitable 2 people

Call 021 167 1524

To check availability

Email: enderbys@xtra.co.nz
www.discovergoatisland.co.nz

NATIVE TREES Grasses, Shrubs

Wholesale Prices direct
to the public

LIBERTY PARK

90 Jones Road

Omaha

(09)422 7307

Monday – Friday

8am – 4.30pm

Sat 9am–3pm



BUILDING PLANS & CONSENTS

Geoff Alexander (NDAT)

LBP # 123496

Ph. 09 422 6624

Mob. 0272 260 161

alex.g.h@xtra.co.nz



Design & Draughting Services

Resource Consents

Building Consents

Concept Design

New Builds

Alterations

Additions

Forest and Bird COMMUNITY COAST CARE GROUP



Your help would be great at the next COMMUNITY WORKING BEE. We'll be doing some cleaning up around plants we put in last year. There will be jobs for all levels so don't be put off! We'll be working in one of Leigh's iconic spots- at the end of the cemetery point.

THURSDAY 22 MARCH, 9-11a.m.

Gloves, loppers or secateurs.

Be at the cemetery gate by 9am or else walk through the cemetery and out to the point.

Great to look along the cliff top towards Lax Cres and see the great work the residents there have done in removing PAMPAS. Even better, it is now all planted with natives endemic to the area, and the first plantings of some years ago now look like a natural forest. It is a credit to the land owners and it complements the work our group is doing. We have removed PAMPAS from the adjacent public land by Daniels Reef and have more to do.

If you have the fluffy PAMPAS plant, it will now be in full bloom and its beautiful white or pinky red tassel flowers will now be about to spread the seeds on the next breeze! Please remove any PAMPAS in or near your property urgently and stop it from spreading around the village and out to Hauturu or Tawharanui. Dispose of flower heads in your orange rubbish bag. Thanks.

Hope you can join us on Thursday. Ph if you need to. 4226001

Neil Sutherland



**Brand new in the heart of
Leigh Village**

*Five stylish self-contained motel units
with a retro beach vibe*

Book online:

www.leighcentral.co.nz

Phone 09 422 6070

Mobile: 021 246 0757

LEIGH MOTORS 2017 LIMITED

- | | |
|-------------|-------------------|
| ● WOF | ● BATTERIES |
| ● SERVICING | ● GAS BOTTLE SWAP |
| ● REPAIRS | ● TYRES |
| ● FUEL | ● BAIT & ICE |

***Come and chat to our friendly team for all your
mechanical requirements***

Ph: 09 422 6077

EMAIL—leighmotors2017@gmail.com

Goat Island Snorkel Day

10am—3pm

Explore the waters Goat Island - NZ's oldest marine reserve. Find snapper, parore and goatfish. Fun for the whole whanau. Bring your own gear or get free hire of our mask, snorkel, fins and wetsuits. Recommended for everyone 5 years and up. All children under 15 years must be accompanied by an adult beach observer. Experienced guides and advanced safety procedures will be in place on the day. Koha/donations welcome.

Register at the event on the day. Sea conditions permitting.

Postponements on www.emr.org.nz

More info contact auckland@emr.org.nz



Doggie "Dos"

Please **Don't** leave them behind
when you
walk your dog.

You are required by law to
remove them and it is offensive to
other people not to do so.

GARDEN BAGS

(hold approx. 1 cu.m)

FOR ALL **GREEN** WASTE

DROP OFF – PICK UP

From \$20 each

Phone **FRICK**

021 123 0997
or 09 422 6223

LEIGH GENERAL STORE

OPEN 7 DAYS

- ▶ Groceries
- ▶ Ice Cream & Drinks
- ▶ Fresh Fruit & Vegetables
- ▶ Magazines, Postcards & Films
- ▶ Free Range Eggs
- ▶ Hardware & Seeds
- ▶ Bait & Fishing Gear
- ▶ Wine

EFTPOS AVAILABLE
Phone **09 422 6034**

DIALADIGGER

earthworks

- Site Works & Foundations • Drainage & Driveways
- Drilling < 600 mm • Section Clearing • 8 Tonne Tipper Available

Brian George experienced & efficient operator

021 749 594 Brian | 09 422 6267 Office
info@dialadigger.co.nz



LJ Hooker

We have been selling Leigh for almost 30 years, love and support our community, and are continually achieving great results.

For all your real estate needs contact the Leigh specialists and find out what we can do for you

☐ **Marie-Dominique** 021 490 039
@ mlennan.warkworth@ljh.co.nz
☐ **Matthieu** 021 0291 6897
@ mattlennan.warkworth@ljh.co.nz
☎ 09 425 8589
✉ 20 Cumberland St, Leigh
20 Queen St, Warkworth
🌐 warkworth.ljhooker.co.nz
📘 facebook.com/Leigh.Matakana.Properties

LJ Hooker Leigh

Broadbents 2001 Limited Licensed Agent REAA 2008



RODNEY RAMS RUGBY LEAGUE & SPORTS CLUB INC

ANNUAL GENERAL MEETING

Is to be held on Tuesday 10 April 2018 at 6:30pm
at the Rodney Rams Rugby League Club, Whangateau to
receive Financial Statements and Election of Committee.

Nominations to be in by Sunday 25 March 2018

Further enquiries to: Amy Weller - Secretary

Email: rodneyrans@outlook.com

Ph: 021 138 1407

REEL BLUE SPORTS

Fishing Tackle

For all your local fishing needs

Hooks, Braid Fluorocarbon Leaders
Game Swivels Hapuka Rigs
Live Bait Rigs Richter Game Lures
Innovative Lures, ESCA Hapuka Attractors
Metal Jigs, Inchiu Jigs, Slow Jigs

Email: stephen@reelbluesports.co.nz

[www: reelbluesports.co.nz](http://www.reelbluesports.co.nz)

Ph 027-777-3-222

Buy on line and save
Support local business



RODNEY SEPTIC TANK CLEANING

PETER CAIRNS

Telephone: 09 422 7166

Mobile: 0274 946 370

GOAT ISLAND NZ

**GLASS BOTTOM
BOAT TOURS**
KAYAK & SNORKEL HIRE

Look, learn, play & explore!

See marine life, caves & reefs aboard
our 45-minute fully commentated tour!
Located on the beach, Goat Island
Marine Reserve. Bookings essential.



www.glassbottomboat.co.nz info@glassbottomboat.co.nz 09 4226334/027 4979764

Leigh Volunteer Fire Brigade

Well, the big news for Leigh Volunteer Fire Brigade is that the long-awaited fire station building upgrade is about to start. The rumours that the container on the fire station forecourt is the new station are not true.

The fire station upgrade was first planned before the Christchurch earthquakes struck which damaged fire stations across Canterbury. Naturally fixing these had priority and although some work was done to Leigh Fire Station, the major work was deferred until now. Watch this space for updates and the date of the opening of the upgraded fire station.

During building alterations access to the fire station will be restricted due to health and safety regulations.

Brigade members continued a busy year with a further 11 callouts in February, the majority in the latter two weeks of the month. We attended 2 motor vehicle accidents, both at Whangateau, an oil spill at Matakana, a false alarm at Tawharanui, assisted a diver who was injured at Goat Island and was rescued by the Westpac Helicopter crew and medical callouts to Leigh (3), Matheson Bay, Pakiri Hill and Pakiri. Westpac also attended this call.

The wet weather has kept callouts to grass and vegetation fires to a minimum and also meant the restricted fire season has been changed to an open fire season. Be aware that the wet weather has caused the vegetation to grow rapidly and if we do get a dry few weeks will make it vulnerable to fires.

Training has been curtailed a little by the weather and over the next few weeks we will be moving equipment around to allow the builders to do their job. Access to the fire station will be restricted during the building process under health and safety regulations but the brigade will continue to attend callouts.

Our numbers are down a little, but if you think you'd like to give firefighting a go, come down to the fire station at 7pm on Tuesday night and have a look at what we do.

*SFF Tony Enderby
Brigade Secretary*

SECTION SERVICES

Trees (topped, pruned, felled),
hedges, tidy ups, landscaping

Ph 027 222 1223

Dominic

6 Hill St, Leigh

dguzzo2000@yahoo.com



Creative solutions

Health & Safety in the workplace

Advice, Site Specific Plans, Policies & Procedures
prepared for
**Tradesmen, Businesses, Farms, Companies
or sole traders.**

*Free no obligation quote, give me a call
to discuss your needs*

Wendy Stephens

PO Box 195 Leigh

027 284 9300 or 09 422 6260

GOOD SORTS

This month our GOOD SORTS are **Mark & Jeremy and their dogs!** On all their walks they pick up and dispose of litter from our streets. They have been spotted on our beautiful harbour track collecting up loads of plastic rubbish washed up by the wind and rough seas. You guys are STARS and the Leigh Community Church is delighted to acknowledge your good work in our community with some home baking.

Do you know of a special person in the Leigh area who deserves acknowledgement?

Please write in a few words their good deed or thoughtfulness, including their name, address and phone number and drop it into the Leigh General Store in an envelope marked "Good Sort" or email the Editor at enderbys@xtra.co.nz.

The person considered most deserving will receive home baking courtesy of Leigh Community Church.

PAKIRI TENNIS CLUB

Quiz Night 14 April

Pakiri Tennis Club is holding a Quiz Night at Pakiri Hall on 14 April as a fundraiser for its junior coaching programme. This is always a fun night with quiz masters Howard and Mary Cooper and lots of raffles and spot prizes. Tables of 4-6 people, \$10 per person. BYO food and drink.

For table bookings please contact Edwina 021 148 7402 or Liz on 09 422 6549.



webster|malcolm|law

**Trusted
Approachable
Experienced**

15 Neville Street, Warkworth

09 425 8037

info@webstermalcolm.co.nz
www.webstermalcolm.co.nz

Ask an expert about all your travel needs:

- ✓ Accommodation
- ✓ Holiday Packages
- ✓ Travel Insurance
- ✓ Car Hire
- ✓ Flights
- ✓ Tours
- ✓ Cruises

FLIGHT CENTRE®

The Airfare Experts

LOWEST AIRFARE GUARANTEE

We will beat available airfare quotes for flights departing from New Zealand or you fly free.*
Conditions apply*



Flight Centre Warkworth | 54 Queen Street
Call 09 422 3302 | 0800 292 759
warkworth@flightcentre.co.nz

▼ For full terms & conditions see flightcentre.co.nz/lowestairfareguarantee

Leigh 100 years ago

"Has the Prosperity of the British Empire been caused by the Colonizing Spirit, or by her Military Power?"; "If Prohibition were Carried, should the Trade be Compensated?" and "Should Bachelors be Taxed?" were some of the issues debated at the fortnightly meetings of the Mutual Improvement Society held in the Leigh Hall. Mrs Knowles, the local teacher had started the meetings attended by sixty members who also sang and read poetry.

Planning was underway for the Omaha-Pakiri Jubilee Show in 1919 when it would be fifty years since the first held in "Collingwood." Charles and Mary Ann Clarke's home on 13th March 1869. At a public meeting, Mr John Greenwood was elected Chair, and Mr Duncan Knaggs, Secretary and Treasurer, positions held respectively by their fathers, William Greenwood and Thomas W. Knaggs for that first show. The only surviving exhibitors from 1869, James Greenwood and Charles, were elected honorary members of the new committee.

Leigh Church Services

All denominations and visitors are most
welcome to join with us each
Sunday at 11 am

There is also a
prayer meeting
every Sunday
at 10.30am.



All welcome

Lieutenant Eddie Wyatt looking "in the pink of condition" was welcomed home to Leigh after an absence of over three years serving in Gallipoli and Egypt, and then Officer training in England. A picnic was held at the Claim[Dacres, now Whangateau], and later, he received a "hearty welcome" at a dance at the Leigh Hall.

www.paperspast.natlib.govt.nz

Charles Clarke's diaries, Rodney and Otamatea Times, Waitemata and Kaipara Gazette, 13 February 1918, 27th March 1918, 10 April 1918

Sheryl Corbett



We also offer the following:

- ♦ Water Filters
- ♦ Pool Valet Service
- ♦ Water Testing
- ♦ Water Treatment
- ♦ Spray Equipment
- ♦ Mobile & Workshop Services

31 Woodcocks Road, Warkworth ♦ Phone 09 425 9100
E: splashwater@xtra.co.nz

Little Blue Penguins

Little blue penguins are common around the Leigh coast and often come ashore to preen and re-oil themselves. During storms and onshore winds, such as we have had several of lately, they are completely worn out when they reach the beach and don't have the strength to walk up into the shelter of the bushes. This leaves them exposed to predators, such as black-backed gulls which attack them.

If you find a penguin on the beach and it doesn't look injured the best approach is to pick it up in a towel, avoiding contact with your hands, and put it in a sheltered place clear of high tide. Bushes and flaxes are ideal and the birds will remain there as long as they need to, to rest, preen and re-oil their feathers. Once they've recovered they will re-enter the water and begin feeding again.

Never pick the bird up and put it back into the water, as it will be exhausted and it could drown. Our bare hands can take the water-proofing off its feathers.

Thousands of seabirds have been found dead along the east coast of the upper North Island so far this year. Two hundred were found during a survey on one day alone, on a 6km stretch of Pakiri Beach. Another count a week later on Te Arai Beach, found 133 dead seabirds, including seven little blue penguins.

Little blue penguins are also vulnerable while they are moulting. Uncontrolled dogs in particular are also a major threat.

What to do if you find a penguin in trouble

Observe it. If it looks exhausted but not in trouble, pick it up, using a towel and place it in the sand dunes or tussock.

If it looks like it is sick or wounded, call your local bird recovery expert.

If it looks like it is fine, leave it alone.

Keep your dog on a leash and advise others to do so too.

If it's dead, bury it.



LEIGH ELECTRICAL LTD

JOE ROBERTS

Phone: 021 220 3717

leighelectrical@hotmail.com

42 Hauraki Rd, Leigh, 0985



Rochford Landscapes & Mini Diggers

Leigh Local

Covering all aspects of Landscape Construction

As well as our successful landscape construction and mini digger services, we are now offering a Greenscape division offering:

- Hedge and tree trimming
- Planting services
- Lawn installation
- Section clearing and waste removal
- Garden maintenance and installation
- Revegetation and wetland installation
- Lifestyle block maintenance

0508 2 SCAPE 021 939 117
rochford.landscaping@gmail.com

The logo for Mike Pero Real Estate, featuring the name 'mike Pero' in a white, handwritten-style script on a black rectangular background.

Mike Pero Real Estate Licensed REAA (2008)



Proudly supporting *you* and your *community*

Supporting: *Mahurangi College, Warkworth Town Hall Restoration, Warkworth/Wellsford Hospice, Matakana School, Omaha Golf Club, Rodney Rams League Club, Mike Pero Foundation, Point Wells — Christmas Letterbox Competition, Community Centre, Croquet Club, Fete and Library.*

Angela Wain

Mike Pero Matakana Coast

P: 0274 936 800 or 0800 MATAKANA | Angela.Wain@mikepero.com



@mikeperomatakanacoast

Sunday in the Park

9am to 1pm

1 April 2018

Tawharanui Regional Park

A range of activities and tasks will be undertaken in the morning. These jobs will be advised on the day. We appreciate the support of anyone who wishes to volunteer their time to assist with this worthy project. A lovely barbeque meal is offered after the work.

This is a good chance to socialise with other TOSSI members. Thank you to Warkworth Butchery for discounted sausages and Kenilworth Orchard (just south of Warkworth) for the donated fruit.

Wear: old clothes, gumboots/sturdy shoes, gardening/work gloves NB: Please make sure that the soles of your boots are clean. Bring: raincoat or sunhat depending on weather.

For more information, please email: secretary@tossi.org.nz

Telephone: Sally 09 425 0161 / Marguerite 027 528 4658

Tawharanui Snorkel Day

10am to 3pm

Saturday 24 March

A community snorkel day will be held at Tawharanui. Bring your own gear or use the free equipment provided.

For more info contact: Lorna Auckland@emr.org.nz

NOT JUST HATS

We have a large range of hats
& accessories for all seasons

Next time you are in town
come and have a look

Monday—Friday 9am—5pm
Saturday 9am—2pm

ASB Building 17-19 Queen Street
Warkworth Phone/Fax (09) 425 9516
Email rae_peggys@xtra.co.nz

RODNEY AUTO TRIM

Specialists in
Auto & Marine Upholstery

- ♦ Marine Hoods, Covers, Squabs
- ♦ Truck and Tractor seats
- ♦ Car hood linings, seats, carpets
- ♦ Motorbike seats
- ♦ Balcony Screens, clear and mesh

Alan Hodge

Ph 09 422 6822 Mob 022 675 1046

12 Penguin Street, Leigh

Email: rodneypautotrim@gmail.com

Community Directory

Forest & Bird Community Coast Care Group – a community initiative to restore Leigh's reserves and bush areas, monthly weeding, planting bees Neil Sutherland 09 422 6001

Graffiti Coordinator – Lionel Anderson 021 795 306 call or txt with location of graffiti

Leigh & Districts Ex Services & Community Club - meets 4pm, 1st Sunday of month at Leigh Bowling Club. Anzac Day Service and Community Matters. New members welcome. President Lucy Harris 021 202 8932

Leigh Badminton Club – anyone interested in re-starting this club please call Dennis Humphrey 09 422 6625

Leigh Bowling Club - to foster fellowship and the game of bowls. New members welcome. President Biscuit McLean 027 590 4829 or sec. Dave Johnson 09 422 6560

Leigh Business Community - meets 3rd Wednesday of month Jan Scott 09 422 6681

www.leighbythesea.co.nz

Leigh Cards 500 - 1pm - 3.30pm Tuesday, Leigh Bowling Club, all welcome, \$3.00

Leigh Cemetery Trust - Secretary Joyce McCormick 09 422 6893

Leigh Community Preschool - 09 422 6516 www.leighpreschool.co.nz

Leigh Girl Guides, Brownies & Pippins - Fay Bradnam 021 0279 0161

Leigh Hall - Bookings / enquiries phone Lynn Mellsopp 027 2868 625 or email

leighhallauckland@gmail.com

Leigh Harbour Valley Society - 09 422 6880 www.leighharbourvalleysociety.org.nz

Leigh Library – 'The Cottage' opposite Leigh Store. Librarian Tracey Lawton

021 825 818 / 09 422 6944 Library Hours as follows:

Open Sat: 9.30-1pm; Tues: 2pm-6pm; Wed: 2pm-4pm; Thurs: 11am-1pm

Leigh School – 09 422 6031 www.leigh.school.nz

Leigh Tennis Club – enquiries at Leigh Eats or Marie Dominique 021 490 039

Leigh Walking Group - meets Mondays at 9.30am for interesting walks throughout the Rodney, Kaipara and Auckland regions. Hugh McKergow 09 422 6219

Leigh Women's Bowling Club - meet Tues, Oct-April, for friendly bowls. New members very welcome. Olive Gravatt 09 422 6273 or Wendy Brooks 09 422 7963

Matheson Bay Neighbourhood Assn - Secretary Peter Spence 021 404 529 or

mathesonbayassn@gmail.com

Pakiri Community Landcare Group - Frankie 021 688 997 or nick@nickmolloy.co.nz

Pakiri Tennis Club Contact Linda Taylor (Secretary) on 021 242 7459

Rodney Rams Secretary Amy Weller 021 138 1407 rodneyrans@outlook.com

Tawharanui Open Sanctuary Society Inc. (TOSSI) - www.tossi.org.nz Secretary

Karyn Hoksbergen 09 585 1315 email secretary@tossi.org.nz

Whangateau Acoustic Music & Social Club - www.whangateau.co.nz

Whangateau Neighbourhood Support – Sharyn Carew sharyncarew@vodafone.co.nz

Whangateau Residents & Ratepayers Assn meets 7.30pm, 2nd Tuesday of month at Whangateau Hall. Audrey Sharp 09 422 6209 or Hugh McKergow 09 422 6219

JUSTICES OF THE PEACE & CELEBRANTS

JP - Fay Bradnam 09 422 6038

JP & Wedding Celebrant - Dr John Peebles 021 974 247

JP & Funeral Celebrant - Barrie Mason 021 683 747

Celebrant Annie Mellor www.fabulousweddingnz.com Ph 027 9297767

Facebook

Love Leigh - www.facebook.com/groups/LoveLeigh/

Leigh by the Sea - www.facebook.com/pages/Leighbythesea/251994924849626

Leigh Historical Photographs NZ - www.facebook.com/groups/739949979454558

If your club or group does not appear, please advise the editor.